

Nur für Forschungszwecke

CD3 Monoklonaler Antikörper

Katalog-Nr.: APC-65077 **1 Publikationen**



Allgemeine Informationen

Katalog-Nr.: APC-65077	GenBank-Zugangsnummer: BC098236	Reinigungsmethode: Affinitätsreinigung
Größe: 100ug, 0.2 mg/ml	GeneID (NCBI): 12501	CloneNo.: 17A2
Wirt: Ratte	Vollständiger Name: CD3 antigen, epsilon polypeptide	Anregungs-/Emissionsmaxima-Wellenlängen: 650 nm / 660 nm
Isotyp: IgG2b, kappa		

Anwendungen

Geprüfte Anwendungen:
FC

In Publikationen genannte Anwendungen:
FC

Getestete Reaktivität:
Maus

Zitierte Arten:
Maus

Hintergrundinformationen

CD3 is a multimeric protein associated with the T-cell receptor (TCR) to form a complex involved in antigen recognition and signal transduction (PMID: 15885124). CD3 is composed of CD3 γ , δ , ϵ , and ζ chains (PMID: 1826255). It is expressed by thymocytes in a developmentally regulated manner, T cells, and some NK cells (PMID: 3289580). The TCR recognizes antigens bound to major histocompatibility complex (MHC) molecules. TCR-mediated peptide-MHC recognition is transmitted to the CD3 complex, leading to the intracellular signal transduction (PMID: 11985657).

Bemerkenswerte Veröffentlichungen

Verfasser	Pubmed ID	Journal	Anwendung
Lian Zhu	36321642	J Mater Chem B	FC

Lagerung

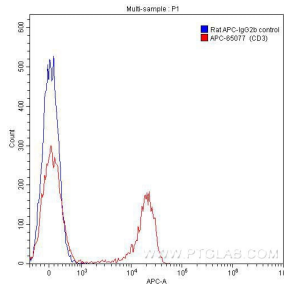
Lagerungsbedingungen:
Store at 2-8°C. Avoid exposure to light. Stable for one year after shipment.

Lagerungspuffer:
Phosphatbasierter Puffer mit 0,09% Natriumazid und 0,1% Gelatine, pH 7,2.

For technical support and original validation data for this product please contact:
T: 1 (888) 4PTGLAB (1-888-478-4522) (toll free in USA), or 1(312) 455-8498 (outside USA)
E: proteintech@ptglab.com
W: ptglab.com

This product is exclusively available under Proteintech Group brand and is not available to purchase from any other manufacturer.

Ausgewählte Validierungsdaten



1X10⁶ C57BL/6 mouse splenocytes were surface stained with 0.5 ug APC-anti-mouse CD3 (APC-65077, clone 17A2) (red) or 0.5 ug APC-rat IgG2b isotype control (blue). Cells were not fixed.