

Nur für Forschungszwecke

ZEB2 Rekombinanter Antikörper

Katalog-Nr.:82020-1-RR



Allgemeine Informationen

Katalog-Nr.: 82020-1-RR	GenBank-Zugangsnummer: BC060819	Reinigungsmethode: Protein-A-Reinigung
Größe: 100ul , Konzentration: 1000 µg/ml von9839	GeneID (NCBI): 9839	CloneNo.: 1K22
Nanodrop;	Vollständiger Name: zinc finger E-box binding homeobox 2	Empfohlene Verdünnungen: WB 1:2000-1:10000 IHC 1:600-1:2400
Wirt: Kaninchen	Berechnete Masse: 136 kDa	
Isotyp: IgG	Beobachtete Masse: 140-150 kD	
Immunogen Katalognummer: AG5171		

Anwendungen

Geprüfte Anwendungen:

IHC, WB, ELISA

Getestete Reaktivität:

Human

Hinweis-IHC: Antigenmaskierung mit TE-Puffer pH 9,0 empfohlen. (*) Wahlweise kann die Antigenmaskierung auch mit Citratpuffer pH 6,0 erfolgen.

Positivkontrollen:

WB : HepG2-Zellen, A549-Zellen, HeLa-Zellen, K-562-Zellen

IHC : humanes Nierenzellkarzinomgewebe,

Hintergrundinformationen

Zinc finger E-box-binding homeobox (ZEB2) is a key transcription factor that acts as a multifunctional regulator during nervous system development. ZEB2 contains two zinc finger domains and a homeodomain-like sequence and interacts with the TGF- β superfamily signaling regulators, Smads, to regulate the expression of their downstream genes. ZEB2 is expressed in the developing neural tube, as well as in neural crest cells, the hippocampus and the cerebral cortex. ZEB2 has previously been implicated in EMT, cell-cycle progression, apoptosis and senescence. ZEB2 was overexpressed in bladder, ovarian, stomach, pancreatic and squamous cell carcinoma, in the intestinal subtype of stomach cancers, and at the invasive front of CRC where EMT is most prominent. ZEB2 also mediates cell-fate decision in neuronal, T cells and hematopoietic stem cells. PMID: 27659015)

Lagerung

Lagerungsbedingungen:

Bei -20°C lagern. Nach dem Versand ein Jahr lang stabil

Lagerungspuffer:

PBS mit 0.02% Natriumazid und 50% Glycerin pH 7.3.

Aliquotieren ist nicht notwendig bei -20°C Lagerung

*** 20ul-Größen enthalten 0.1% BSA

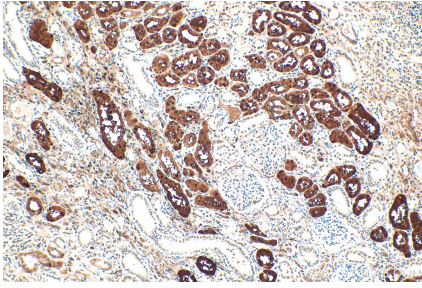
For technical support and original validation data for this product please contact:

T: 1 (888) 4PTGLAB (1-888-478-4522) (toll free in USA), or 1(312) 455-8498 (outside USA)

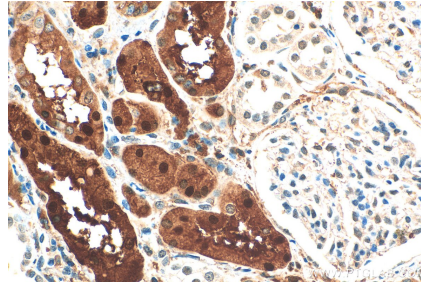
E: proteintech@ptglab.com
W: ptglab.com

This product is exclusively available under Proteintech Group brand and is not available to purchase from any other manufacturer.

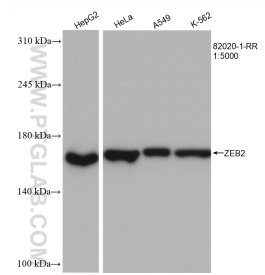
Ausgewählte Validierungsdaten



Immunohistochemical analysis of paraffin-embedded human renal cell carcinoma tissue slide using 82020-1-RR (ZEB2 antibody) at dilution of 1:1200 (under 10x lens). Heat mediated antigen retrieval with Tris-EDTA buffer (pH 9.0).



Immunohistochemical analysis of paraffin-embedded human renal cell carcinoma tissue slide using 82020-1-RR (ZEB2 antibody) at dilution of 1:1200 (under 40x lens). Heat mediated antigen retrieval with Tris-EDTA buffer (pH 9.0).



Various lysates were subjected to SDS PAGE followed by western blot with 82020-1-RR (ZEB2 antibody) at dilution of 1:5000 incubated at room temperature for 1.5 hours.