

Nur für Forschungszwecke

PBLD Monoklonaler Antikörper

Katalog-Nr.:68317-1-Ig



Allgemeine Informationen

Katalog-Nr.: 68317-1-Ig	GenBank-Zugangsnummer: BC009738	Reinigungsmethode: Protein-G-Reinigung
Größe: 150ul , Konzentration: 1000 µg/ml von64081 Nanodrop;	GeneID (NCBI): von64081	CloneNo.: 1G11D4
Wirt: Maus	Vollständiger Name: phenazine biosynthesis-like protein domain containing	Empfohlene Verdünnungen: WB 1:2000-1:10000
Isotyp: IgG1	Beobachtete Masse: 30 kDa	
Immunogen Katalognummer: AG23827		

Anwendungen

Geprüfte Anwendungen: WB, ELISA	Positivkontrollen: WB : Hausschwein-Lebergewebe, Hausschwein- Nierengewebe
Getestete Reaktivität: Human	

Hintergrundinformationen

PBLD, also termed as MAWBP, was first identified from a human liver cDNA library using a yeast two-hybrid technique by Iriyama et al. As the only representative of phenazine biosynthesis-like protein family, PBLD is widely expressed in human tissues, such as brain, heart, lung, liver, pancreas, kidney, and placenta. Its expression is elevated in several diseases processes, including insulin resistance, folate deficiency, and hypotension. PBLD has been proved to be involved in gastric carcinogenesis, PBLD expression was attenuated in gastric cancer (GC) tissues, and negatively regulated the growth and invasion in gastric cancer cell-lines by inhibiting TGF-β1-induced EMT (Epithelial-Mesenchymal Transition).(PMID: 11355021, 17929853, 23687415, 26594798)

Lagerung

Lagerungsbedingungen:
Bei -20°C lagern. Nach dem Versand ein Jahr lang stabil

Lagerungspuffer:
PBS mit 0.02% Natriumazid und 50% Glycerin pH 7.3.

Aliquotieren ist nicht notwendig bei -20°C Lagerung

*** 20ul-Größen enthalten 0.1% BSA

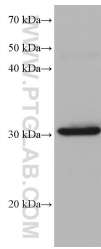
For technical support and original validation data for this product please contact:

T: 1 (888) 4PTGLAB (1-888-478-4522) (toll free
in USA), or 1(312) 455-8498 (outside USA)

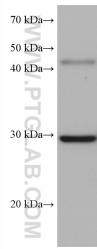
E: proteintech@ptglab.com
W: ptglab.com

This product is exclusively available under Proteintech Group brand and is not available to purchase from any other manufacturer.

Ausgewählte Validierungsdaten



pig liver tissue were subjected to SDS PAGE followed by western blot with 68317-1-Ig (PBLD antibody) at dilution of 1:5000 incubated at room temperature for 1.5 hours.



pig kidney tissue were subjected to SDS PAGE followed by western blot with 68317-1-Ig (PBLD antibody) at dilution of 1:5000 incubated at room temperature for 1.5 hours.