

Nur für Forschungszwecke

Cardiac Troponin T Monoklonaler Antikörper

Katalog-Nr.:68300-1-Ig



Allgemeine Informationen

Katalog-Nr.: 68300-1-Ig	GenBank-Zugangsnummer: BC002653	Reinigungsmethode: Protein-G-Reinigung
Größe: 150ul , Konzentration: 500 µg/ml von Nanodrop;	GeneID (NCBI): 7139	CloneNo.: 4E2D8
Wirt: Maus	Vollständiger Name: troponin T type 2 (cardiac)	Empfohlene Verdünnungen: WB 1:20000-1:100000 IF 1:200-1:800
Isotyp: IgG1	Berechnete Masse: 36 kDa	
Immunogen Katalognummer: AG7716	Beobachtete Masse: 34-40 kDa	

Anwendungen

Geprüfte Anwendungen:

IF, WB, ELISA

Getestete Reaktivität:

Hausschwein, Huhn, Kaninchen, Maus, Ratte

Positivkontrollen:

WB : Rattenherzgewebe, Hausschwein-Herzgewebe,
Kaninchenherzgewebe, Mausherzgewebe

IF : Mausherzgewebe,

Hintergrundinformationen

Cardiac Troponin T, also named as cTnT, TNNT2. This gene encodes the cardiac isoform of troponin T. The encoded protein is the tropomyosin-binding subunit of the troponin complex, which is located on the thin filament of striated muscles and regulates muscle contraction in response to alterations in intracellular calcium ion concentration. Mutations in this gene have been associated with familial hypertrophic cardiomyopathy as well as with dilated cardiomyopathy. Cardiac Troponin T can be detected as about 34-40 kDa.

Lagerung

Lagerungsbedingungen:

Bei -20°C lagern. Nach dem Versand ein Jahr lang stabil

Lagerungspuffer:

PBS mit 0.02% Natriumazid und 50% Glycerin pH 7.3.

Aliquotieren ist nicht notwendig bei -20°C Lagerung

*** 20ul-Größen enthalten 0.1% BSA

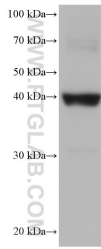
For technical support and original validation data for this product please contact:

T: 1 (888) 4PTGLAB (1-888-478-4522) (toll free
in USA), or 1(312) 455-8498 (outside USA)

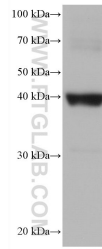
E: proteintech@ptglab.com
W: ptglab.com

This product is exclusively available under Proteintech Group brand and is not available to purchase from any other manufacturer.

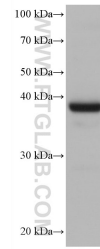
Ausgewählte Validierungsdaten



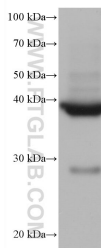
pig heart tissue were subjected to SDS PAGE followed by western blot with 68300-1-Ig (cTnT antibody) at dilution of 1:50000 incubated at room temperature for 1.5 hours.



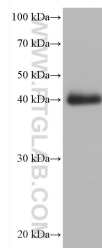
rabbit heart tissue were subjected to SDS PAGE followed by western blot with 68300-1-Ig (cTnT antibody) at dilution of 1:50000 incubated at room temperature for 1.5 hours.



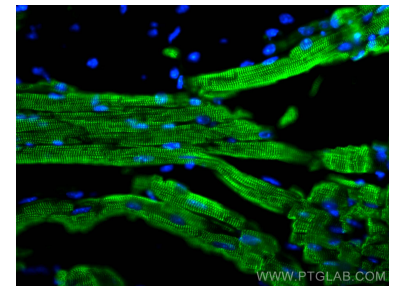
rat heart tissue were subjected to SDS PAGE followed by western blot with 68300-1-Ig (cTnT antibody) at dilution of 1:50000 incubated at room temperature for 1.5 hours.



mouse heart tissue were subjected to SDS PAGE followed by western blot with 68300-1-Ig (cTnT antibody) at dilution of 1:50000 incubated at room temperature for 1.5 hours.



chicken heart tissue were subjected to SDS PAGE followed by western blot with 68300-1-Ig (cTnT antibody) at dilution of 1:50000 incubated at room temperature for 1.5 hours.



Immunofluorescent analysis of (4% PFA) fixed mouse heart tissue using cTnT antibody (68300-1-Ig, Clone: 4E2D8) at dilution of 1:400 and CoraLite@488-Conjugated AffiniPure Goat Anti-Mouse IgG(H+L).