

Nur für Forschungszwecke

KIAA1429 Monoklonaler Antikörper

Katalog-Nr.:68235-1-Ig



Allgemeine Informationen

Katalog-Nr.: 68235-1-Ig	GenBank-Zugangsnummer: BC113380	Reinigungsmethode: Protein-G-Reinigung
Größe: 150ul, Konzentration: 500 µg/ml von Nanodrop;	GeneID (NCBI): 25962	CloneNo.: 3F1A4
Wirt: Maus	Vollständiger Name: KIAA1429	Empfohlene Verdünnungen: WB 1:5000-1:50000
Isotyp: IgG1	Berechnete Masse: 1812 aa, 202 kDa	
Immunogen Katalognummer: AG22449	Beobachtete Masse: 200-210 kDa	

Anwendungen

Geprüfte Anwendungen: FC, WB, ELISA	Positivkontrollen: WB : LNCaP-Zellen, 4T1-Zellen, HEK-293-Zellen, HeLa-Zellen, HepG2-Zellen, Jurkat-Zellen, K-562-Zellen, NIH/3T3-Zellen
Getestete Reaktivität: Human, Maus	

Hintergrundinformationen

VIRMA (KIAA1429) is a key component of m6A methyltransferase (writer) complex that include METTL3, METTL14, WTAP, VIRMA, HAKAI, ZC3H13, and RBM15. VIRMA mediates methylation in the 3'UTR and around the stop codon, thus affecting alternative polyadenylation. VIRMA has been reported to act as oncogenic factor in breast cancer and liver cancer.

Lagerung

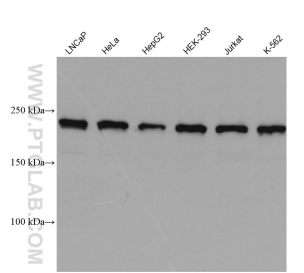
Lagerungsbedingungen:
Bei -20°C lagern. Nach dem Versand ein Jahr lang stabil
Lagerungspuffer:
PBS mit 0.02% Natriumazid und 50% Glycerin pH 7.3.
Aliquotieren ist nicht notwendig bei -20°C Lagerung

*** 20ul-Größen enthalten 0.1% BSA

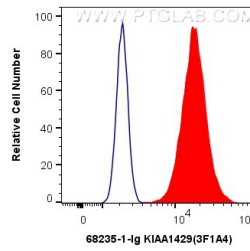
For technical support and original validation data for this product please contact:
T: 1 (888) 4PTGLAB (1-888-478-4522) (toll free in USA), or 1(312) 455-8498 (outside USA)
E: proteintech@ptglab.com
W: ptglab.com

This product is exclusively available under Proteintech Group brand and is not available to purchase from any other manufacturer.

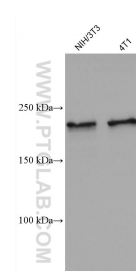
Ausgewählte Validierungsdaten



Various lysates were subjected to SDS PAGE followed by western blot with 68235-1-Ig (KIAA1429 antibody) at dilution of 1:20000 incubated at room temperature for 1.5 hours.



1×10^6 MCF-7 cells were intracellularly stained with 0.4 μ g Anti-Human KIAA1429 (68235-1-Ig, Clone:3F1A4) and CoraLite[®]488-Conjugated AffiniPure Goat Anti-Mouse IgG(H+L) at dilution 1:1000 (red), or 0.4 μ g Control Antibody. Cells were fixed with 4% PFA and permeabilized with Flow Cytometry Perm Buffer (PF00011-C).



Various lysates were subjected to SDS PAGE followed by western blot with 68235-1-Ig (KIAA1429 antibody) at dilution of 1:20000 incubated at room temperature for 1.5 hours.