

Nur für Forschungszwecke

calcyphosine Monoklonaler Antikörper



Katalog-Nr.:68225-1-Ig

Allgemeine Informationen

Katalog-Nr.: 68225-1-Ig	GenBank-Zugangsnummer: BC080599	Reinigungsmethode: Protein-G-Reinigung
Größe: 150ul , Konzentration: 1000 µg/ml von828 Nanodrop;	GeneID (NCBI): 287D1	CloneNo.: 2B7D1
Wirt: Maus	Vollständiger Name: calcyphosine	Empfohlene Verdünnungen: WB 1:2000-1:10000
Isotyp: IgG1	Berechnete Masse: 189 aa, 21 kDa	
Immunogen Katalognummer: AG10330	Beobachtete Masse: 21 kDa	

Anwendungen

Geprüfte Anwendungen:
WB, ELISA

Getestete Reaktivität:
Hausschwein, Human, Kaninchen

Positivkontrollen:

WB : SK-BR-3 cells, Hausschwein-Lungengewebe, PC-3-Zellen, U-251-Zellen

Hintergrundinformationen

calcyphosine is a calcium-binding protein, which may play a role in the regulation of ion transport. Calcyphosine (CAPS) was initially identified in the canine thyroid but has also been detected in humans and other mammals. CAPS synthesis is increased by thyroid-stimulating hormone and cAMP analogs that promote cell proliferation and maintain cell differentiation. Recently, CAPS was found to be involved in many kinds of tumor.

Lagerung

Lagerungsbedingungen:

Bei -20°C lagern. Nach dem Versand ein Jahr lang stabil

Lagerungspuffer:

PBS mit 0.02% Natriumazid und 50% Glycerin pH 7.3.

Aliquotieren ist nicht notwendig bei -20°C Lagerung

*** 20ul-Größen enthalten 0.1% BSA

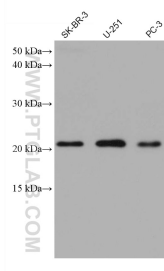
For technical support and original validation data for this product please contact:

T: 1 (888) 4PTGLAB (1-888-478-4522) (toll free in USA), or 1(312) 455-8498 (outside USA)

E: proteintech@ptglab.com
W: ptglab.com

This product is exclusively available under Proteintech Group brand and is not available to purchase from any other manufacturer.

Ausgewählte Validierungsdaten



Various lysates were subjected to SDS PAGE followed by western blot with 68225-1-Ig (CAPS antibody) at dilution of 1:5000 incubated at room temperature for 1.5 hours.