

Nur für Forschungszwecke

VPS25 Monoklonaler Antikörper

Katalog-Nr.:68197-1-Ig



Allgemeine Informationen

Katalog-Nr.: 68197-1-Ig	GenBank-Zugangsnummer: BC006282	Reinigungsmethode: Protein-G-Reinigung
Größe: 150ul, Konzentration: 1000 µg/ml von84313 Nanodrop;	GeneID (NCBI): 84313	CloneNo.: 3B4C3
Wirt: Maus	Vollständiger Name: vacuolar protein sorting 25 homolog (S. cerevisiae)	Empfohlene Verdünnungen: WB 1:5000-1:50000 IF 1:400-1:1600
Isotyp: IgG1	Berechnete Masse: 176 aa, 21 kDa	
Immunogen Katalognummer: AG8243	Beobachtete Masse: 19 kDa	

Anwendungen

Geprüfte Anwendungen:
IF, WB, ELISA

Getestete Reaktivität:
Human, Kaninchen

Positivkontrollen:
WB : HEK-293-Zellen, HeLa-Zellen, HepG2-Zellen,
Jurkat-Zellen, Kaninchennierengewebe

IF : HepG2-Zellen,

Hintergrundinformationen

VPS25 is a component of the endosome-associated complex ESCRT-II (Endosomal Sorting Complexes Required for Transport protein II). ESCRT-II complex, composed of VPS25, VPS36, and SNF8, functions in sorting of ubiquitinated membrane proteins during endocytosis. ESCRT-II complex is probably involved in the recruitment of the ESCRT-III complex. VPS25 is highly conserved. Human VPS25 gene maps to chromosome 17q21.31 and is expressed in a wide range of tissues (PMID: 16889659).

Lagerung

Lagerungsbedingungen:
Bei -20°C lagern. Nach dem Versand ein Jahr lang stabil

Lagerungspuffer:
PBS mit 0.02% Natriumazid und 50% Glycerin pH 7.3.

Aliquotieren ist nicht notwendig bei -20°C Lagerung

*** 20ul-Größen enthalten 0.1% BSA

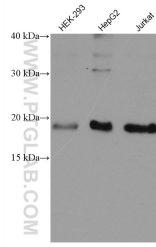
For technical support and original validation data for this product please contact:

T: 1 (888) 4PTGLAB (1-888-478-4522) (toll free
in USA), or 1(312) 455-8498 (outside USA)

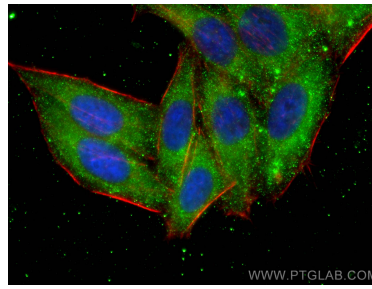
E: proteintech@ptglab.com
W: ptglab.com

This product is exclusively available under Proteintech Group brand and is not available to purchase from any other manufacturer.

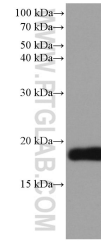
Ausgewählte Validierungsdaten



Various lysates were subjected to SDS PAGE followed by western blot with 68197-1-Ig (VPS25 antibody) at dilution of 1:10000 incubated at room temperature for 1.5 hours.



Immunofluorescent analysis of (-20°C Ethanol) fixed HepG2 cells using VPS25 antibody (68197-1-Ig, Clone: 3B4C3) at dilution of 1:800 and CoraLite®488-Conjugated AffiniPure Goat Anti-Mouse IgG(H+L), CL594-Phalloidin (red).



rabbit kidney tissue were subjected to SDS PAGE followed by western blot with 68197-1-Ig (VPS25 antibody) at dilution of 1:5000 incubated at room temperature for 1.5 hours.