

Nur für Forschungszwecke

# FITC Monoklonaler Antikörper

Katalog-Nr.: 68132-1-Ig



## Allgemeine Informationen

Katalog-Nr.:  
68132-1-Ig

Größe:  
150ul, Konzentration: 1000 µg/ml von  
Nanodrop;

Wirt:  
Maus

Isotyp:  
IgG2a

GenBank-Zugangsnummer:

GeneID (NCBI):

Vollständiger Name:

Reinigungsmethode:

Protein-A-Reinigung

CloneNo.:

3C10A1

Empfohlene Verdünnungen:

WB 1:5000-1:50000

## Anwendungen

Geprüfte Anwendungen:

WB, ELISA

Getestete Reaktivität:

FITC

Positivkontrollen:

WB : FITC-TDP43, bsa

## Hintergrundinformationen

Fluorescein isothiocyanate (FITC) is a derivative of fluorescein used in wide-ranging applications. It is the original fluorescein molecule functionalized with an isothiocyanate reactive group (-N=C=S), replacing a hydrogen atom on the bottom ring of the structure. It is typically available as a mixture of isomers, fluorescein 5-isothiocyanate (5-FITC) and fluorescein 6-isothiocyanate (6-FITC). FITC is reactive towards nucleophiles including amine and sulfhydryl groups on proteins. CAS number of FITC: 27072-45-3 (mixture); 3326-32-7, 5-isomer; 18861-78-4 (6-isomer). This mouse monoclonal antibody detects the FITC only. This antibody can be coated in the plate to capture the FITC conjugated protein or antibody.

## Lagerung

Lagerungsbedingungen:

Bei -20°C lagern. Nach dem Versand ein Jahr lang stabil

Lagerungspuffer:

PBS mit 0.02% Natriumazid und 50% Glycerin pH 7.3.

Aliquotieren ist nicht notwendig bei -20°C Lagerung

\*\*\* 20ul-Größen enthalten 0.1% BSA

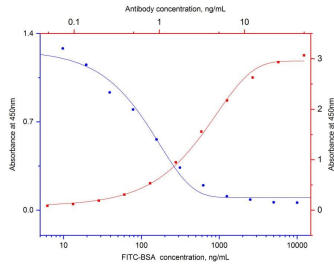
For technical support and original validation data for this product please contact:

T: 1 (888) 4PTGLAB (1-888-478-4522) (toll free  
in USA), or 1(312) 455-8498 (outside USA)

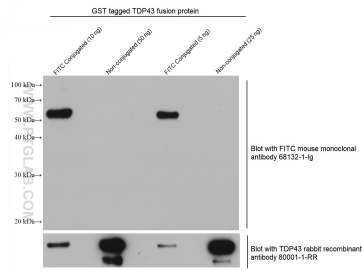
E: proteintech@ptglab.com  
W: ptglab.com

This product is exclusively available under Proteintech Group brand and is not available to purchase from any other manufacturer.

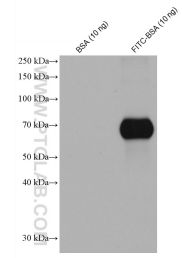
## Ausgewählte Validierungsdaten



Indirect ELISA and competitive ELISA results show that this antibody is specific to FITC. Indirect ELISA was performed by coating FITC conjugated BSA at 0ng/well followed by blocking with 1% BSA. Serial diluted primary antibody was added to the plates and incubated at 37°C. HRP-goat anti-mouse was used for detection (red curve, refer to top X-right Y axis). Competitive ELISA was performed similarly except that different concentration of FITC (active group been



WB result of FITC antibody (68132-1-Ig; 1:40000; incubated at room temperature for 1.5 hours) with FITC conjugated protein and un-conjugated protein as negative control. Antibody to TDP-43 as the positive control to target protein.



WB results of FITC antibody (68132-1-Ig; 1:10000) with BSA and FITC conjugated BSA.