

Nur für Forschungszwecke

HTRA1 Monoklonaler Antikörper

Katalog-Nr.:68053-1-Ig



Allgemeine Informationen

Katalog-Nr.: 68053-1-Ig	GenBank-Zugangsnummer: NM_002775	Reinigungsmethode: Protein-A-Reinigung
Größe: 150ul , Konzentration: 1000 µg/ml von5654 Nanodrop;	GeneID (NCBI): 5654	CloneNo.: 1B11G12
Wirt: Maus	Vollständiger Name: Htra serine peptidase 1	Empfohlene Verdünnungen: WB 1:1000-1:6000
Isotyp: IgG2a	Berechnete Masse: 51 kDa	
Immunogen Katalognummer: AG31204	Beobachtete Masse: 51 kDa	

Anwendungen

Geprüfte Anwendungen:

WB, ELISA

Getestete Reaktivität:

Hausschwein, Human, Kaninchen, Maus, Ratte

Positivkontrollen:

WB : hTERT-RPE1-Zellen, Hausschwein-Hirngewebe, HeLa-Zellen, HepG2-Zellen, Kaninchenhirngewebe, L02-Zellen, Maushirngewebe, Rattenhirngewebe

Hintergrundinformationen

HTRA1, also named as HTRA, PRSS11 and L56, belongs to the peptidase S1B family. It is a protease that regulates the availability of insulin-like growth factors (IGFs) by cleaving IGF-binding proteins. HTRA1 represses signaling by TGF-beta family members. Variations in the promoter region of HTRA1 are the cause of susceptibility to age-related macular degeneration type 7 (ARMD7). Defects in HTRA1 are the cause of cerebral autosomal recessive arteriopathy with subcortical infarcts and leukoencephalopathy (CARASIL). The 50 kDa HTRA1 was found at varying levels in the majority samples tested, whereas the 42 kDa form of HTRA1 was identified in degenerated intervertebral disc protein samples (PMID:22556410). The short truncated monomer 37 kDa and dimer 74 kDa are proved (PMID:25329061). The antibody is specific to HTRA1.

Lagerung

Lagerungsbedingungen:

Bei -20°C lagern. Nach dem Versand ein Jahr lang stabil

Lagerungspuffer:

PBS mit 0.02% Natriumazid und 50% Glycerin pH 7.3.

Aliquotieren ist nicht notwendig bei -20°C Lagerung

***** 20ul-Größen enthalten 0.1% BSA**

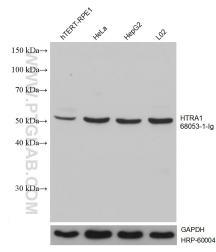
For technical support and original validation data for this product please contact:

T: 1 (888) 4PTGLAB (1-888-478-4522) (toll free
in USA), or 1(312) 455-8498 (outside USA)

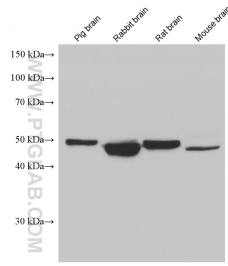
E: proteintech@ptglab.com
W: ptglab.com

This product is exclusively available under Proteintech Group brand and is not available to purchase from any other manufacturer.

Ausgewählte Validierungsdaten



Various lysates were subjected to SDS PAGE followed by western blot with 68053-1-Ig (HTRA1 antibody) at dilution of 1:3000 incubated at room temperature for 1.5 hours. The membrane was stripped and reblotted with HRP-conjugated GAPDH Monoclonal antibody (HRP-60004) as loading control.



Various lysates were subjected to SDS PAGE followed by western blot with 68053-1-Ig (HTRA1 antibody) at dilution of 1:3000 incubated at room temperature for 1.5 hours.