

Nur für Forschungszwecke

ZFP36L1 Monoklonaler Antikörper

Katalog-Nr.:68038-1-Ig



Allgemeine Informationen

Katalog-Nr.: 68038-1-Ig	GenBank-Zugangsnummer: BC018340	Reinigungsmethode: Protein-A-Reinigung
Größe: 150ul , Konzentration: 1000 µg/ml von677 Nanodrop;	GeneID (NCBI): 150000	CloneNo.: 1H6G6
Wirt: Maus	Vollständiger Name: zinc finger protein 36, C3H type-like 1	Empfohlene Verdünnungen: 1:1000-1:6000
Isotyp: IgG2b	Berechnete Masse: 338 aa, 36 kDa	
Immunogen Katalognummer: AG30469	Beobachtete Masse: 36 kDa	

Anwendungen

Geprüfte Anwendungen: WB, ELISA	Positivkontrollen: WB : HUVEC-Zellen, A549-Zellen, HeLa-Zellen, PC-12-Zellen, U2OS-Zellen
Getestete Reaktivität: Human, Ratte	

Hintergrundinformationen

As a member of the Tristetraprolin (TTP) RNA binding protein family, ZFP36L1 regulate gene expression post-transcriptionally by promoting mRNA decay. In mammals, ZFP36L1 and its family members have been shown to regulate development, cell differentiation, cell cycle, apoptosis and anti-cancer capability by targeting an extensive overlapping repertoire of mRNAs.

Lagerung

Lagerungsbedingungen:
Bei -20°C lagern. Nach dem Versand ein Jahr lang stabil
Lagerungspuffer:
PBS mit 0.02% Natriumazid und 50% Glycerin pH 7.3.
Aliquotieren ist nicht notwendig bei -20°C Lagerung

*** 20ul-Größen enthalten 0.1% BSA

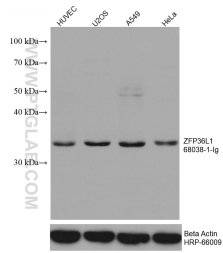
For technical support and original validation data for this product please contact:

T: 1 (888) 4PTGLAB (1-888-478-4522) (toll free in USA), or 1(312) 455-8498 (outside USA)

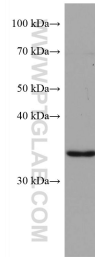
E: proteintech@ptglab.com
W: ptglab.com

This product is exclusively available under Proteintech Group brand and is not available to purchase from any other manufacturer.

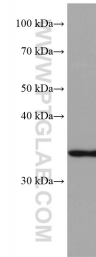
Ausgewählte Validierungsdaten



Various lysates were subjected to SDS PAGE followed by western blot with 68038-1-Ig (ZFP36L1 antibody) at dilution of 1:3000 incubated at room temperature for 1.5 hours. The membrane was stripped and reblotted with HRP-conjugated Beta Actin Monoclonal antibody (HRP-66009) as loading control.



HSC-T6 cells were subjected to SDS PAGE followed by western blot with 68038-1-Ig (ZFP36L1 antibody) at dilution of 1:3000 incubated at room temperature for 1.5 hours.



PC-12 cells were subjected to SDS PAGE followed by western blot with 68038-1-Ig (ZFP36L1 antibody) at dilution of 1:3000 incubated at room temperature for 1.5 hours.