

Nur für Forschungszwecke

# ALDH3A1 Monoklonaler Antikörper

Katalog-Nr.:68036-1-Ig

Vorgestelltes Produkt



## Allgemeine Informationen

Katalog-Nr.: 68036-1-Ig	GenBank-Zugangsnummer: BC004370	Reinigungsmethode: Protein-G-Reinigung
Größe: 150ul, Konzentration: 1000 µg/ml von218 Nanodrop;	GeneID (NCBI): Vollständiger Name: aldehyde dehydrogenase 3 family, memberA1	CloneNo.: 1D4G7 Empfohlene Verdünnungen: WB 1:5000-1:50000 IHC 1:1000-1:4000 IF 1:200-1:800
Wirt: Maus	Berechnete Masse: 50 kDa	
Isotyp: IgG1	Beobachtete Masse: 50 kDa	
Immunogen Katalognummer: AG8125		

## Anwendungen

### Geprüfte Anwendungen:

IF, IHC, WB, ELISA

### Getestete Reaktivität:

Human

**Hinweis-IHC: Antigendemaskierung mit TE-Puffer pH 9,0 empfohlen. (\*) Wahlweise kann die Antigendemaskierung auch mit Citratpuffer pH 6,0 erfolgen.**

### Positivkontrollen:

WB : A549-Zellen, HeLa-Zellen, LNCaP-Zellen

IHC : humanes Nierengewebe,

IF : HEK-293-Zellen,

## Hintergrundinformationen

ALDH3A1(Aldehyde dehydrogenase, dimeric NADP-preferring), also named as ALDH3, is a member of the ALDH superfamily, which consists of NAD(P)<sup>+</sup>-dependent enzymes that catalyse the oxidation of a wide variety of endogenously produced and exogenous aldehydes to their corresponding acids. It is expressed at high concentrations in the mammalian cornea and it is believed that it protects this vital tissue and the rest of the eye against UVlight-induced damage.(PMID:12943535). It can exist as a dimer(PMID:16919242).

## Lagerung

### Lagerungsbedingungen:

Bei -20°C lagern. Nach dem Versand ein Jahr lang stabil

### Lagerungspuffer:

PBS mit 0.02% Natriumazid und 50% Glycerin pH 7.3.

Aliquotieren ist nicht notwendig bei -20°C Lagerung

\*\*\* 20ul-Größen enthalten 0.1% BSA

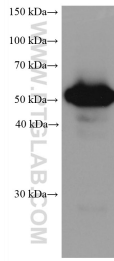
For technical support and original validation data for this product please contact:

T: 1 (888) 4PTGLAB (1-888-478-4522) (toll free in USA), or 1(312) 455-8498 (outside USA)

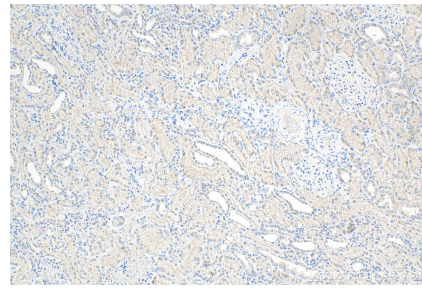
E: proteintech@ptglab.com  
W: ptglab.com

This product is exclusively available under Proteintech Group brand and is not available to purchase from any other manufacturer.

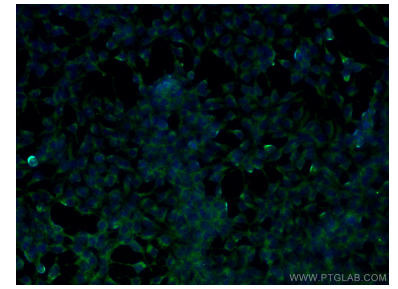
## Ausgewählte Validierungsdaten



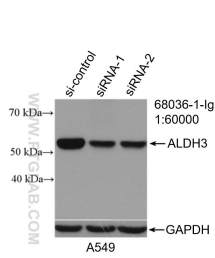
A549 cells were subjected to SDS PAGE followed by western blot with 68036-1-Ig (ALDH3A1 antibody) at dilution of 1:20000 incubated at room temperature for 1.5 hours.



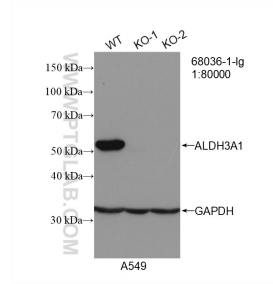
Immunohistochemical analysis of paraffin-embedded human kidney tissue slide using 68036-1-Ig (ALDH3A1 antibody) at dilution of 1:2000 (under 10x Lens). Heat mediated antigen retrieval with Tris-EDTA buffer (pH 9.0).



Immunofluorescent analysis of (-20°C Ethanol) fixed HEK-293 cells using ALDH3A1 antibody (68036-1-Ig, Clone: 1D4G7 ) at dilution of 1:400 and CoraLite®488-Conjugated AffiniPure Goat Anti-Mouse IgG(H+L).



WB result of ALDH3A1 antibody (68036-1-Ig; 1:60000; incubated at room temperature for 1.5 hours) with sh-Control and sh-ALDH3A1 transfected A549 cells.



WB result of ALDH3A1 antibody (68036-1-Ig; 1:80000; room temperature for 1.5 hours) with wild-type and ALDH3A1 knockout A549 cells.