

Nur für Forschungszwecke

RAB39B Monoklonaler Antikörper

Katalog-Nr.: 68014-1-Ig



Allgemeine Informationen

Katalog-Nr.: 68014-1-Ig	GenBank-Zugangsnummer: BC009714	Reinigungsmethode: Protein-A-Reinigung
Größe: 150ul, Konzentration: 1000 µg/ml von 116442 Nanodrop;	GeneID (NCBI): 116442	CloneNo.: 2F4F7
Wirt: Maus	Vollständiger Name: RAB39B, member RAS oncogene family	Empfohlene Verdünnungen: WB 1:5000-1:50000
Isotyp: IgG2b	Berechnete Masse: 213 aa, 25 kDa	
Immunogen Katalognummer: AG27170	Beobachtete Masse: 25 kDa	

Anwendungen

Geprüfte Anwendungen: WB, ELISA	Positivkontrollen: WB: Kaninchenhirngewebe, Hausschwein-Cerebellum-Gewebe, Hausschwein-Hirngewebe, Jurkat-Zellen, LNCaP-Zellen, Maus-Cerebellum-Gewebe, Maushirngewebe
Getestete Reaktivität: Hausschwein, Human, Kaninchen, Maus, Ratte	

Hintergrundinformationen

RAB39B is a member of the RAB GTPase family with a putative role in vesicle trafficking. RAB39B is predominantly expressed in neuronal cells and is localized to the endoplasmic reticulum, Golgi and trans-Golgi recycling endosomes. Several reports suggested that RAB39B may regulate protein trafficking and the PI3K-AKT-mTOR pathway. Mutations in RAB39B are known to be associated with X-linked intellectual disability (XLID), Parkinson's disease, and autism.

Lagerung

Lagerungsbedingungen:
Bei -20°C lagern.
Lagerungspuffer:
PBS mit 0.02% Natriumazid und 50% Glycerin pH 7.3.
Aliquotieren ist nicht notwendig bei -20°C Lagerung

*** 20ul-Größen enthalten 0.1% BSA

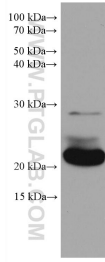
For technical support and original validation data for this product please contact:

T: 1 (888) 4PTGLAB (1-888-478-4522) (toll free in USA), or 1(312) 455-8498 (outside USA)

E: proteintech@ptglab.com
W: ptglab.com

This product is exclusively available under Proteintech Group brand and is not available to purchase from any other manufacturer.

Ausgewählte Validierungsdaten



rabbit brain tissue were subjected to SDS PAGE followed by western blot with 68014-1-Ig (RAB39B antibody) at dilution of 1:20000 incubated at room temperature for 1.5 hours.