

Nur für Forschungszwecke

# IPO5 Monoklonaler Antikörper

Katalog-Nr.:67962-1-Ig



## Allgemeine Informationen

<b>Katalog-Nr.:</b> 67962-1-Ig	<b>GenBank-Zugangsnummer:</b> BC001497	<b>Reinigungsmethode:</b> Protein-A-Reinigung
<b>Größe:</b> 150ul, Konzentration: 1000 µg/ml von3843 Nanodrop;	<b>GeneID (NCBI):</b> importin 5	<b>CloneNo.:</b> 1E2B9
<b>Wirt:</b> Maus	<b>Vollständiger Name:</b> importin 5	<b>Empfohlene Verdünnungen:</b> WB 1:1000-1:5000 IHC 1:250-1:1000 IF 1:200-1:800
<b>Isotyp:</b> IgG1	<b>Beobachtete Masse:</b> 124 kDa	
<b>Immunogen Katalognummer:</b> AG30955		

## Anwendungen

### Geprüfte Anwendungen:

IF, IHC, WB, ELISA

### Getestete Reaktivität:

Human, Maus, Ratte

**Hinweis-IHC: Antigendemaskierung mit TE-Puffer pH 9,0 empfohlen. (\*) Wahlweise kann die Antigendemaskierung auch mit Citratpuffer pH 6,0 erfolgen.**

### Positivkontrollen:

**WB:** HeLa-Zellen, HEK-293-Zellen, HepG2-Zellen, Jurkat-Zellen, K-562-Zellen, NIH/3T3-Zellen, PC-12-Zellen

**IHC:** Maushodengewebe,

**IF:** A431-Zellen,

## Hintergrundinformationen

IPO5 is a member of the importin beta family. Structurally, the protein adopts the shape of a right-hand solenoid and is composed of 24 HEAT repeats. IPO5 facilitates cytoplasmic polyadenylation element-binding protein CPEB3 translocation by binding to the RRM1 motif of CPEB3 in neurons. NMDAR signaling increases RanBP1 expression and reduces the level of cytoplasmic GTP-bound Ran. These changes enhance CPEB3-IPO5 interaction, which consequently accelerates the nuclear import of CPEB3 and promotes its nuclear function.

## Lagerung

### Lagerungsbedingungen:

Bei -20°C lagern. Nach dem Versand ein Jahr lang stabil

### Lagerungspuffer:

PBS mit 0.02% Natriumazid und 50% Glycerin pH 7.3.

Aliquotieren ist nicht notwendig bei -20°C Lagerung

\*\*\* 20ul-Größen enthalten 0.1% BSA

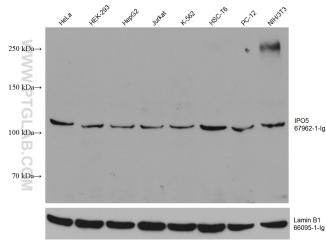
For technical support and original validation data for this product please contact:

T: 1 (888) 4PTGLAB (1-888-478-4522) (toll free in USA), or 1(312) 455-8498 (outside USA)

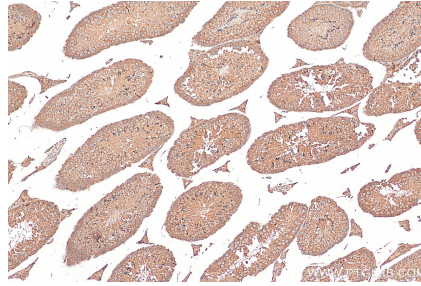
E: proteintech@ptglab.com  
W: ptglab.com

This product is exclusively available under Proteintech Group brand and is not available to purchase from any other manufacturer.

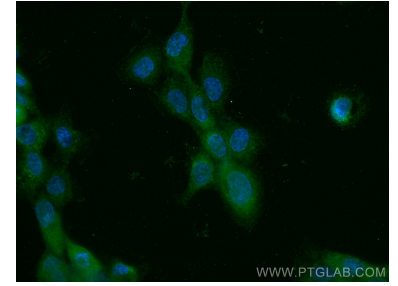
## Ausgewählte Validierungsdaten



Various lysates were subjected to SDS PAGE followed by western blot with 67962-1-Ig (IPO5 antibody) at dilution of 1:5000 incubated at room temperature for 1.5 hours. The membrane was stripped and reblotted with Lamin B1 Monoclonal antibody (66095-1-Ig) as loading control.



Immunohistochemical analysis of paraffin-embedded mouse testis tissue slide using 67962-1-Ig (IPO5 antibody) at dilution of 1:500 (under 10x lens). Heat mediated antigen retrieval with Tris-EDTA buffer (pH 9.0).



Immunofluorescent analysis of (-20°C Methanol) fixed A431 cells using IPO5 antibody (67962-1-Ig, Clone: 1E2B9) at dilution of 1:400 and CoraLite®488-Conjugated AffiniPure Goat Anti-Mouse IgG(H+L).