

Nur für Forschungszwecke

HSP47 Monoklonaler Antikörper

Katalog-Nr.:67863-1-Ig



Allgemeine Informationen

Katalog-Nr.: 67863-1-Ig	GenBank-Zugangsnummer: BC014623	Reinigungsmethode: Protein-A-Reinigung
Größe: 150ul , Konzentration: 1000 µg/ml von871 Nanodrop;	GeneID (NCBI): 2A8F6	CloneNo.: 2A8F6
Wirt: Maus	Vollständiger Name: serpin peptidase inhibitor, clade H (heat shock protein 47), member 1, (collagen binding protein 1)	Empfohlene Verdünnungen: WB 1:5000-1:50000 IHC 1:1000-1:4000 IF 1:400-1:1600
Isotyp: IgG1	Berechnete Masse: 46 kDa	
Immunogen Katalognummer: AG30999	Beobachtete Masse: 46 kDa	

Anwendungen

Geprüfte Anwendungen:

IF, IHC, WB, ELISA

Getestete Reaktivität:

Human, Maus, Ratte

Hinweis-IHC: Antigendemaskierung mit TE-Puffer pH 9,0 empfohlen. (*) Wahlweise kann die Antigendemaskierung auch mit Citratpuffer pH 6,0 erfolgen.

Positivkontrollen:

WB : K-562-Zellen, 4T1-Zellen, HEK-293T-Zellen, HEK-293-Zellen, HeLa-Zellen, Jurkat-Zellen, LNCaP-Zellen, NIH/3T3-Zellen

IHC : humanes Nierenzellkarzinomgewebe,

IF : HeLa-Zellen, HepG2-Zellen

Hintergrundinformationen

Lagerung

Lagerungsbedingungen:

Bei -20°C lagern. Nach dem Versand ein Jahr lang stabil

Lagerungspuffer:

PBS mit 0.02% Natriumazid und 50% Glycerin pH 7.3.

Aliquotieren ist nicht notwendig bei -20°C Lagerung

*** 20ul-Größen enthalten 0.1% BSA

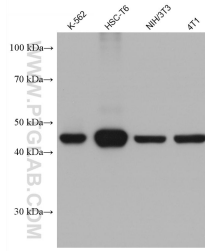
For technical support and original validation data for this product please contact:

T: 1 (888) 4PTGLAB (1-888-478-4522) (toll free in USA), or 1(312) 455-8498 (outside USA)

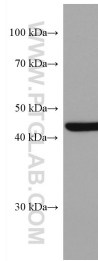
E: proteintech@ptglab.com
W: ptglab.com

This product is exclusively available under Proteintech Group brand and is not available to purchase from any other manufacturer.

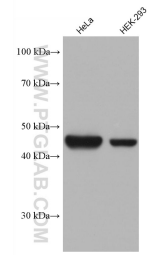
Ausgewählte Validierungsdaten



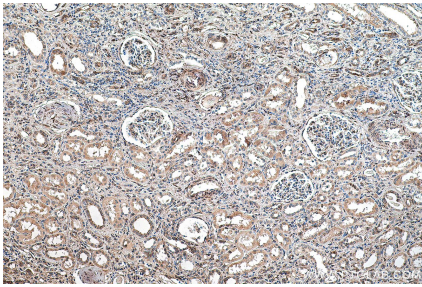
Various lysates were subjected to SDS PAGE followed by western blot with 67863-1-Ig (HSP47 antibody) at dilution of 1:20000 incubated at room temperature for 1.5 hours.



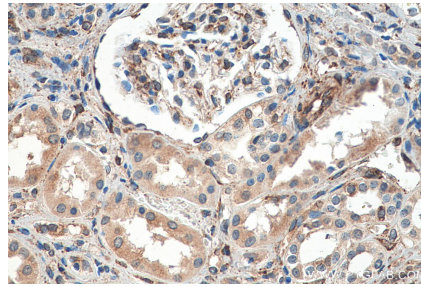
NIH/3T3 cells were subjected to SDS PAGE followed by western blot with 67863-1-Ig (SERPINH1 antibody) at dilution of 1:20000 incubated at room temperature for 1.5 hours.



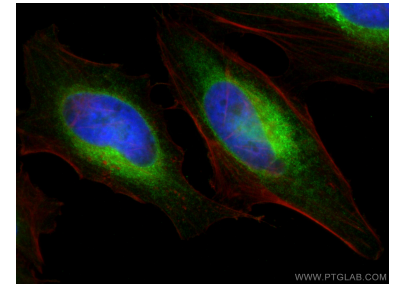
Various lysates were subjected to SDS PAGE followed by western blot with 67863-1-Ig (HSP47 antibody) at dilution of 1:20000 incubated at room temperature for 1.5 hours.



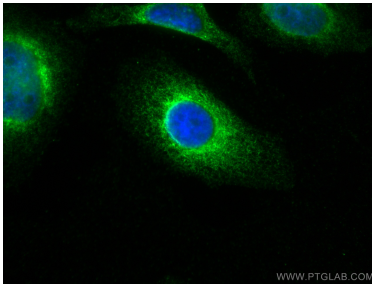
Immunohistochemical analysis of paraffin-embedded human renal cell carcinoma tissue slide using 67863-1-Ig (HSP47 antibody) at dilution of 1:2000 (under 10x lens). Heat mediated antigen retrieval with Tris-EDTA buffer (pH 9.0).



Immunohistochemical analysis of paraffin-embedded human renal cell carcinoma tissue slide using 67863-1-Ig (HSP47 antibody) at dilution of 1:2000 (under 40x lens). Heat mediated antigen retrieval with Tris-EDTA buffer (pH 9.0).



Immunofluorescent analysis of (4% PFA) fixed HeLa cells using HSP47 antibody (67863-1-Ig, Clone: 2A8F6) at dilution of 1:800 and CoraLite@488-Conjugated AffiniPure Goat Anti-Mouse IgG(H+L), CL594-Phalloidin (red).



Immunofluorescent analysis of (-20°C Ethanol) fixed HepG2 cells using HSP47 antibody (67863-1-Ig, Clone: 2A8F6) at dilution of 1:800 and CoraLite@488-Conjugated AffiniPure Goat Anti-Mouse IgG(H+L).