

Nur für Forschungszwecke

Laminin beta 1 Monoklonaler Antikörper



Katalog-Nr.:67705-1-Ig

Allgemeine Informationen

Katalog-Nr.: 67705-1-Ig	GenBank-Zugangsnummer: BC113455	Reinigungsmethode: Protein-G-Reinigung
Größe: 150ul, Konzentration: 1200 µg/ml von3912	GeneID (NCBI): 3912	CloneNo.: 1B8E9
Nanodrop und 500 µg/ml durch die Bradford-Methode mit BSA als Standard;	Vollständiger Name: laminin, beta 1	Empfohlene Verdünnungen: WB 1:2000-1:10000
Wirt: Maus	Berechnete Masse: 1786 aa, 198 kDa	
Isotyp: IgG1	Beobachtete Masse: 220-240 kDa	
Immunogen Katalognummer: AG19182		

Anwendungen

Geprüfte Anwendungen: WB,ELISA	Positivkontrollen: WB : HEK-293-Zellen, A549-Zellen, HeLa-Zellen, HepG2-Zellen, humanes Plazenta-Gewebe, NIH/3T3-Zellen, U2OS-Zellen
Getestete Reaktivität: Human, Maus	

Hintergrundinformationen

Laminins are a family of basement membrane glycoproteins composed of three nonidentical chains, laminin alpha, beta and gamma (formerly A, B1, and B2, respectively) (PMID: 7959779). Laminins contribute to the structure of extracellular matrix and influence the behavior of associated cells, such as adhesion, differentiation, migration, phenotype stability, and resistance to anoikis (PMID: 23057746). Laminin beta 1 (LAMB1) is expressed in most tissues that produce basement membranes, and is one of the 3 chains constituting laminin-1, the first laminin isolated from Engelbreth-Holm-Swarm (EHS) tumor. Laminin beta 1 is also a subunit of laminin-2 (laminin-211 or merosin), laminin-6 (laminin-311 or K-laminin), laminin-8 (laminin-411), laminin-10 (laminin-511) and laminin-12 (laminin-213).

Lagerung

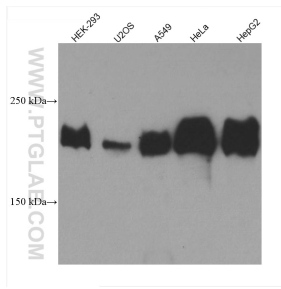
Lagerungsbedingungen:
Bei -20°C lagern.
Lagerungspuffer:
PBS mit 0.02% Natriumazid und 50% Glycerin pH 7.3.
Aliquotieren ist nicht notwendig bei -20°C Lagerung

*** 20ul-Größen enthalten 0.1% BSA

For technical support and original validation data for this product please contact:
T: 1 (888) 4PTGLAB (1-888-478-4522) (toll free in USA), or 1(312) 455-8498 (outside USA)
E: proteintech@ptglab.com
W: ptglab.com

This product is exclusively available under Proteintech Group brand and is not available to purchase from any other manufacturer.

Ausgewählte Validierungsdaten



Various lysates were subjected to SDS PAGE followed by western blot with 67705-1-Ig (LAMB1 antibody) at dilution of 1:5000 incubated at room temperature for 1.5 hours.