

Nur für Forschungszwecke

ETFA Monoklonaler Antikörper

Katalog-Nr.:67661-1-Ig



Allgemeine Informationen

Katalog-Nr.: 67661-1-Ig	GenBank-Zugangsnummer: BC015526	Reinigungsmethode: Protein-A-Reinigung
Größe: 150ul , Konzentration: 1000 µg/ml von2108 Nanodrop und 500 µg/ml durch die Bradford-Methode mit BSA als Standard;	GeneID (NCBI): Vollständiger Name: electron-transfer-flavoprotein, alpha polypeptide	CloneNo.: 3C12G5 Empfohlene Verdünnungen: WB 1:5000-1:50000 IF 1:200-1:800
Wirt: Maus	Berechnete Masse: 30 kDa	
Isotyp: IgG2a	Beobachtete Masse: 30 kDa	
Immunogen Katalognummer: AG30257		

Anwendungen

Geprüfte Anwendungen: IF, WB,ELISA	Positivkontrollen: WB : LNCaP-Zellen, Hausschwein-Lebergewebe, HeLa-Zellen, HuH-7-Zellen, K-562-Zellen, Maushirngewebe, Rattenlebergewebe
Getestete Reaktivität: Hausschwein, Human, Maus, Ratte	IF : HepG2-Zellen,

Hintergrundinformationen

The electron transfer flavoprotein(ETF), located in the mitochondrial matrix, is a nuclear-encoded enzyme delivering to the respiratory chain by straight-chain acyl-CoA dehydrogenases and other dehydrogenases. Mitochondrial fatty acids oxidation and amino acids metabolism are affected in MADD(Multiple acyl-CoA dehydrogenase deficiency). These disorders are linked to a dysfunction of ETF. ETF is a mitochondrial matrix protein consisting of alpha- (30kDa) and beta- (28kDa) subunits encoded by the ETFA and ETFB genes, respectively. (PMID: 31996215,PMID: 16510302)

Lagerung

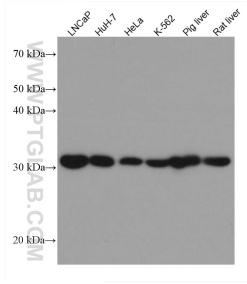
Lagerungsbedingungen:
Bei -20°C lagern.
Lagerungspuffer:
PBS mit 0.02% Natriumazid und 50% Glycerin pH 7.3.
Aliquotieren ist nicht notwendig bei -20°C Lagerung

*** 20ul-Größen enthalten 0.1% BSA

For technical support and original validation data for this product please contact:
T: 1 (888) 4PTGLAB (1-888-478-4522) (toll free in USA), or 1(312) 455-8498 (outside USA) E: proteintech@ptglab.com W: ptglab.com

This product is exclusively available under Proteintech Group brand and is not available to purchase from any other manufacturer.

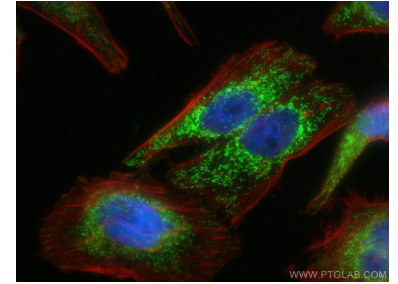
Ausgewählte Validierungsdaten



Various lysates were subjected to SDS PAGE followed by western blot with 67661-1-Ig (ETFA antibody) at dilution of 1:10000 incubated at room temperature for 1.5 hours.



mouse brain tissue were subjected to SDS PAGE followed by western blot with 67661-1-Ig (ETFA antibody) at dilution of 1:10000 incubated at room temperature for 1.5 hours.



Immunofluorescent analysis of (4% PFA) fixed HepG2 cells using ETFA antibody (67661-1-Ig, Clone: 3C12G5) at dilution of 1:400 and CoraLite®488-Conjugated AffiniPure Goat Anti-Mouse IgG(H+L), CL594-Phalloidin (red). DAPI (blue).