

Nur für Forschungszwecke

SLC22A7 Monoklonaler Antikörper

Katalog-Nr.:67479-1-Ig



Allgemeine Informationen

Katalog-Nr.: 67479-1-Ig	GenBank-Zugangsnummer: BC033805	Reinigungsmethode: Protein-A-Reinigung
Größe: 150ul, Konzentration: 1700 µg/ml von10864 Nanodrop und 1000 µg/ml durch die Bradford-Methode mit BSA als Standard;	GeneID (NCBI): 10864	CloneNo.: 3D3C3
Wirt: Maus	Vollständiger Name: solute carrier family 22 (organic anion transporter), member 7	Empfohlene Verdünnungen: WB 1:1000-1:3000 IHC 1:1000-1:4000 IF 1:200-1:800
Isotyp: IgG2a	Berechnete Masse: 60 kDa	
Immunogen Katalognummer: AG25234	Beobachtete Masse: 60 kDa	

Anwendungen

Geprüfte Anwendungen: IF, IHC, WB, ELISA	Positivkontrollen: WB : SMMC-7721-Zellen, IHC : humanes Lebergewebe, humanes Leberkarzinomgewebe, Mauslebergewebe IF : HEK-293-Zellen,
Getestete Reaktivität: Human	
Hinweis-IHC: Antigendemaskierung mit TE-Puffer pH 9,0 empfohlen. (*) Wahlweise kann die Antigendemaskierung auch mit Citratpuffer pH 6,0 erfolgen.	

Hintergrundinformationen

Lagerung

Lagerungsbedingungen:
Bei -20°C lagern.
Lagerungspuffer:
PBS mit 0.02% Natriumazid und 50% Glycerin pH 7.3.
Aliquotieren ist nicht notwendig bei -20°C Lagerung

*** 20ul-Größen enthalten 0.1% BSA

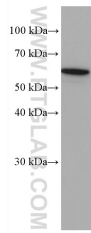
For technical support and original validation data for this product please contact:

T: 1 (888) 4PTGLAB (1-888-478-4522) (toll free
in USA), or 1(312) 455-8498 (outside USA)

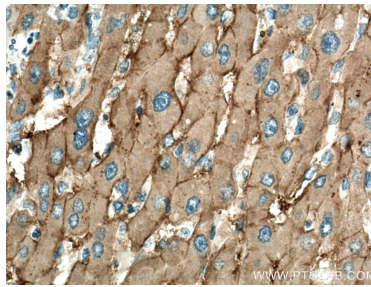
E: proteintech@ptglab.com
W: ptglab.com

This product is exclusively available under Proteintech Group brand and is not available to purchase from any other manufacturer.

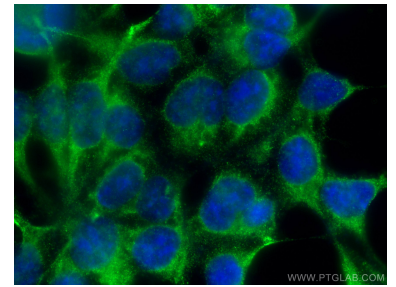
Ausgewählte Validierungsdaten



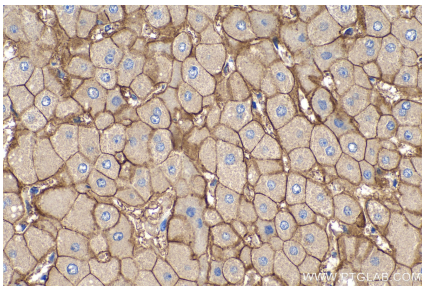
SMMC-7721 cells were subjected to SDS PAGE followed by western blot with 67479-1-Ig (SLC22A7 antibody) at dilution of 1:2000 incubated at room temperature for 1.5 hours.



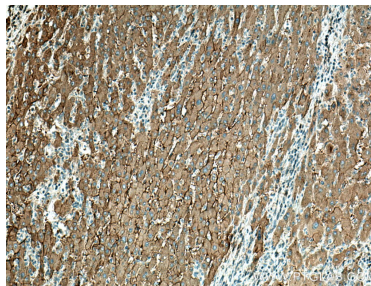
Immunohistochemical analysis of paraffin-embedded human liver cancer tissue slide using 67479-1-Ig (SLC22A7 antibody) at dilution of 1:500 (under 40x lens). Heat mediated antigen retrieval with Tris-EDTA buffer (pH 9.0).



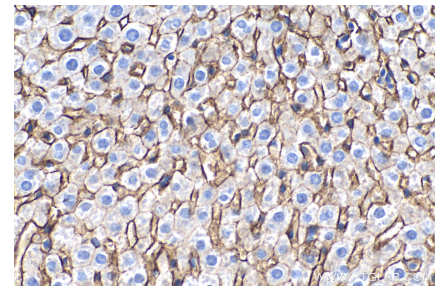
Immunofluorescent analysis of (-20°C Ethanol) fixed HEK-293 cells using SLC22A7 antibody (67479-1-Ig, Clone: 3D3C3) at dilution of 1:400 and CoraLite®488-Conjugated AffiniPure Goat Anti-Mouse IgG(H+L).



Immunohistochemical analysis of paraffin-embedded human liver tissue slide using 67479-1-Ig (SLC22A7 antibody) at dilution of 1:2000 (under 40x lens). Heat mediated antigen retrieval with Tris-EDTA buffer (pH 9.0).



Immunohistochemical analysis of paraffin-embedded human liver cancer tissue slide using 67479-1-Ig (SLC22A7 antibody) at dilution of 1:500 (under 10x lens). Heat mediated antigen retrieval with Tris-EDTA buffer (pH 9.0).



Immunohistochemical analysis of paraffin-embedded mouse liver tissue slide using 67479-1-Ig (SLC22A7 antibody) at dilution of 1:2000 (under 40x lens). Heat mediated antigen retrieval with Tris-EDTA buffer (pH 9.0).