

Nur für Forschungszwecke

MAP1B Monoklonaler Antikörper

Katalog-Nr.:67423-1-Ig



Allgemeine Informationen

Katalog-Nr.: 67423-1-Ig	GenBank-Zugangsnummer: BC141853	Reinigungsmethode: Protein-G-Reinigung
Größe: 150ul , Konzentration: 2100 µg/ml von4131 Nanodrop und 1000 µg/ml durch die Bradford-Methode mit BSA als Standard;	GeneID (NCBI): 4131	CloneNo.: 1E6B9
Wirt: Maus	Vollständiger Name: microtubule-associated protein 1B	Empfohlene Verdünnungen: IHC 1:2500-1:10000 IF 1:50-1:500
Isotyp: IgG1	Berechnete Masse: 2468 aa, 271 kDa	
Immunogen Katalognummer: AG17709		

Anwendungen

Geprüfte Anwendungen: IF, IHC, ELISA	Positivkontrollen: IHC : Rattenhirngewebe, Maushirngewebe IF : Rattenhirngewebe,
Getestete Reaktivität: Human, Maus, Ratte	
Hinweis-IHC: Antigenmaskierung mit TE-Puffer pH 9,0 empfohlen. (*) Wahlweise kann die Antigenmaskierung auch mit Citratpuffer pH 6,0 erfolgen.	

Hintergrundinformationen

Microtubule-associated protein 1B (MAP1B) is a cytoskeleton protein which can promote microtubule assembly. Previous reports have suggested that this protein is closely involved in neuronal development based on its extensive expression in the developing brain and moderate in mature neurons. Gene disruption or knockout studies of the MAP1B gene led to a delayed development of the nervous system in mice. It includes the N-terminal heavy chain and a C-terminal light chain. The MAP1B heavy chain has a microtubule-stabilization effect, and contains an actin-binding site that may play a role in the crosslinking of actin and microtubules, a function that may be important in neurite elongation. Various isoforms around 300-350 kDa of MAP1B can be observed due to the differences in phosphorylation state. (10704485)

Lagerung

Lagerungsbedingungen:
Bei -20°C lagern.
Lagerungspuffer:
PBS with 0.1% sodium azide and 50% glycerol pH 7.3.
Aliquotieren ist nicht notwendig bei -20°C Lagerung

*** 20ul-Größen enthalten 0.1% BSA

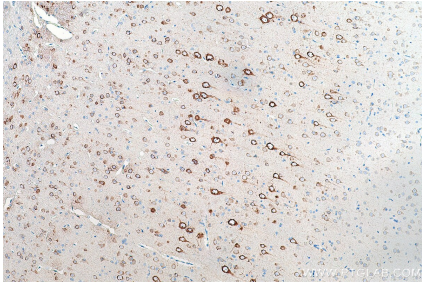
For technical support and original validation data for this product please contact:

T: 1 (888) 4PTGLAB (1-888-478-4522) (toll free in USA), or 1(312) 455-8498 (outside USA)

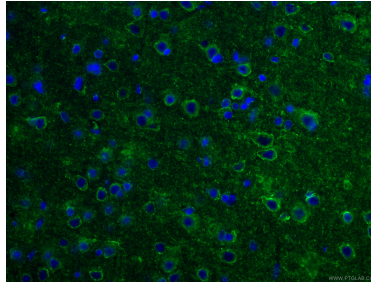
E: proteintech@ptglab.com
W: ptglab.com

This product is exclusively available under Proteintech Group brand and is not available to purchase from any other manufacturer.

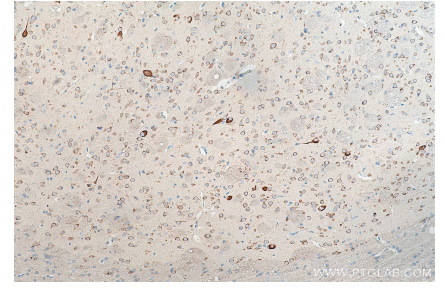
Ausgewählte Validierungsdaten



Immunohistochemical analysis of paraffin-embedded rat brain tissue slide using 67423-1-Ig (MAP1B antibody) at dilution of 1:5000 (under 10x lens). Heat mediated antigen retrieval with Tris-EDTA buffer (pH 9.0).



Immunofluorescent analysis of (4% PFA) fixed rat brain tissue using 67423-1-Ig (MAP1B antibody), at dilution of 1:200 and CoraLite@488-Conjugated AffiniPure Goat Anti-Mouse IgG(H+L).



Immunohistochemical analysis of paraffin-embedded rat brain tissue slide using 67423-1-Ig (MAP1B antibody) at dilution of 1:5000 (under 10x lens). Heat mediated antigen retrieval with Tris-EDTA buffer (pH 9.0).