

## Allgemeine Informationen

<b>Katalog-Nr.:</b> 67420-1-Ig	<b>GenBank-Zugangsnummer:</b> BC141835	<b>Reinigungsmethode:</b> Protein-A-Reinigung
<b>Größe:</b> 150ul , Konzentration: 1000 µg/ml von9584 Nanodrop und 483 µg/ml durch die Bradford-Methode mit BSA als Standard;	<b>GeneID (NCBI):</b> Vollständiger Name: RNA binding motif protein 39	<b>CloneNo.:</b> 2D2C8
<b>Wirt:</b> Maus	<b>Berechnete Masse:</b> 530 aa, 59 kDa	<b>Empfohlene Verdünnungen:</b> WB 1:5000-1:50000 IHC 1:150-1:600 IF 1:50-1:500
<b>Isotyp:</b> IgG2b	<b>Beobachtete Masse:</b> 60-66 kDa	
<b>Immunogen Katalognummer:</b> AG15766		

## Anwendungen

<b>Geprüfte Anwendungen:</b> IF, IHC, WB, ELISA	<b>Positivkontrollen:</b>
<b>Getestete Reaktivität:</b> Human, Maus, Ratte	<b>WB :</b> Caco-2-Zellen, HEK-293-Zellen, HeLa-Zellen, HepG2-Zellen, Jurkat-Zellen, LNCaP-Zellen, Neuro-2a- Zellen, NIH/3T3-Zellen
<b>Hinweis-IHC: Antigenmaskierung mit TE- Puffer pH 9,0 empfohlen. (*) Wahlweise kann die Antigenmaskierung auch mit Citratpuffer pH 6,0 erfolgen.</b>	<b>IHC :</b> humanes Mammakarzinomgewebe, <b>IF :</b> HepG2-Zellen,

## Hintergrundinformationen

RBM39, also named as HCC1 or RNPC2, is a 530 amino acid protein, which contains three RRM (RNA recognition motif) domains and belongs to the splicing factor SR family. RBM39 is widely expressed in various tissues and with highly expression in pancreas, skeletal muscle, lung and brain. RBM39 is a transcriptional coactivator for steroid nuclear receptors ESR1/ER-alpha and ESR2/ER-beta, and JUN/AP-1. RBM39 may be involved in pre-mRNA splicing process.

## Lagerung

**Lagerungsbedingungen:**  
Bei -20°C lagern. Nach dem Versand ein Jahr lang stabil  
**Lagerungspuffer:**  
PBS mit 0.02% Natriumazid und 50% Glycerin pH 7.3.  
**Aliquotieren ist nicht notwendig bei -20°C Lagerung**

**\*\*\* 20ul-Größen enthalten 0.1% BSA**

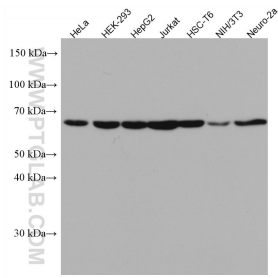
For technical support and original validation data for this product please contact:

T: 1 (888) 4PTGLAB (1-888-478-4522) (toll free  
in USA), or 1(312) 455-8498 (outside USA)

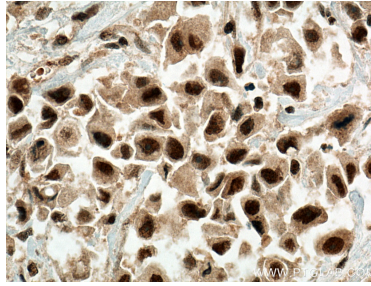
E: [proteintech@ptglab.com](mailto:proteintech@ptglab.com)  
W: [ptglab.com](http://ptglab.com)

**This product is exclusively available under Proteintech Group brand and is not available to purchase from any other manufacturer.**

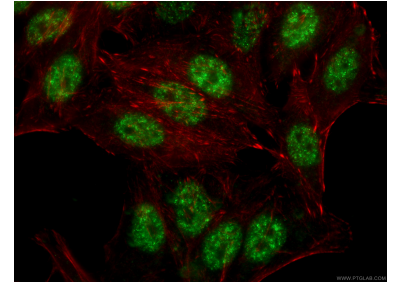
## Ausgewählte Validierungsdaten



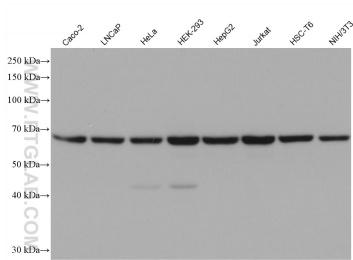
Various lysates were subjected to SDS PAGE followed by western blot with 67420-1-Ig (RBM39 antibody) at dilution of 1:2500 incubated at room temperature for 1.5 hours.



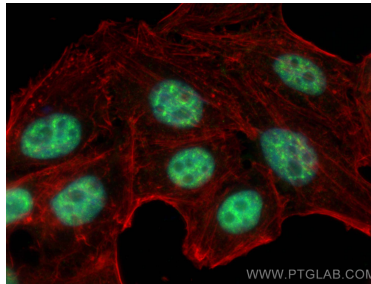
Immunohistochemical analysis of paraffin-embedded human breast cancer tissue slide using 67420-1-Ig (RBM39 antibody) at dilution of 1:300 (under 40x lens). Heat mediated antigen retrieval with Tris-EDTA buffer (pH 9.0).



Immunofluorescent analysis of (-20°C Ethanol) fixed HepG2 cells using 67420-1-Ig (RBM39 antibody), at dilution of 1:200 and CoraLite® 488-Conjugated AffiniPure Goat Anti-Mouse IgG(H+L).



Various lysates were subjected to SDS PAGE followed by western blot with 67420-1-Ig (RBM39 antibody) at dilution of 1:10000 incubated at room temperature for 1.5 hours.



Immunofluorescent analysis of (4% PFA) fixed HepG2 cells using RBM39 antibody (67420-1-Ig, Clone: 2D2C8 ) at dilution of 1:2000 and CoraLite® 488-Conjugated AffiniPure Goat Anti-Mouse IgG(H+L), CL594-phalloidin (red).