

Nur für Forschungszwecke

SEC11A Monoklonaler Antikörper

Katalog-Nr.:67379-1-Ig



Allgemeine Informationen

Katalog-Nr.: 67379-1-Ig	GenBank-Zugangsnummer: BC000359	Reinigungsmethode: Protein-A-Reinigung
Größe: 150ul , Konzentration: 2400 µg/ml von23478 Nanodrop und 1000 µg/ml durch die Bradford-Methode mit BSA als Standard;	GeneID (NCBI): 23478	CloneNo.: 2B11G12
Wirt: Maus	Vollständiger Name: SEC11 homolog A (S. cerevisiae)	Empfohlene Verdünnungen: WB 1:2000-1:10000 IHC 1:50-1:500
Isotyp: IgG2b	Berechnete Masse: 21 kDa	
Immunogen Katalognummer: AG6610	Beobachtete Masse: 17-21 kDa	

Anwendungen

Geprüfte Anwendungen:

IHC, WB,ELISA

Getestete Reaktivität:

Human, Maus, Ratte

Hinweis-IHC: Antigenmaskierung mit TE-Puffer pH 9,0 empfohlen. (*) Wahlweise kann die Antigenmaskierung auch mit Citratpuffer pH 6,0 erfolgen.

Positivkontrollen:

WB : HeLa-Zellen, 4T1-Zellen, HepG2-Zellen, Jurkat-Zellen, K-562-Zellen, NIH/3T3-Zellen

IHC : humanes Leberkarzinomgewebe,

Hintergrundinformationen

SEC11A(Signal peptidase complex catalytic subunit SEC11A) is also named as SEC11L1, SPC18, SPCS4A and belongs to the peptidase S26B family. It is a component of the microsomal signal peptidase complex which removes signal peptides from nascent proteins as they are translocated into the lumen of the endoplasmic reticulum. SEC11A has some isoforms with the molecular mass of 17-21 kDa.

Lagerung

Lagerungsbedingungen:

Bei -20°C lagern.

Lagerungspuffer:

PBS mit 0.02% Natriumazid und 50% Glycerin pH 7.3.

Aliquotieren ist nicht notwendig bei -20°C Lagerung

***** 20ul-Größen enthalten 0.1% BSA**

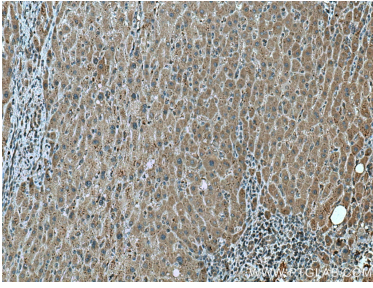
For technical support and original validation data for this product please contact:

T: 1 (888) 4PTGLAB (1-888-478-4522) (toll free in USA), or 1(312) 455-8498 (outside USA)

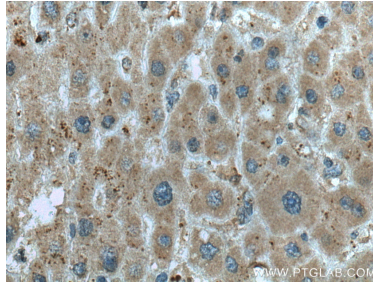
E: proteintech@ptglab.com
W: ptglab.com

This product is exclusively available under Proteintech Group brand and is not available to purchase from any other manufacturer.

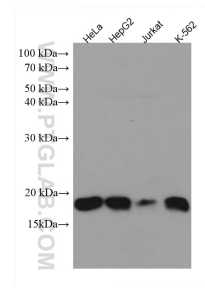
Ausgewählte Validierungsdaten



Immunohistochemical analysis of paraffin-embedded human liver cancer tissue slide using 67379-1-Ig (SEC11A antibody) at dilution of 1:200 (under 10x lens). Heat mediated antigen retrieval with Tris-EDTA buffer (pH 9.0).



Immunohistochemical analysis of paraffin-embedded human liver cancer tissue slide using 67379-1-Ig (SEC11A antibody) at dilution of 1:200 (under 40x lens). Heat mediated antigen retrieval with Tris-EDTA buffer (pH 9.0).



Various lysates were subjected to SDS PAGE followed by western blot with 67379-1-Ig (SEC11A antibody) at dilution of 1:5000 incubated at room temperature for 1.5 hours.