

Nur für Forschungszwecke

YES1 Monoklonaler Antikörper

Katalog-Nr.: 67196-1-Ig

Vorgestelltes Produkt



Allgemeine Informationen

Katalog-Nr.:
67196-1-Ig

Größe:
150ul, Konzentration: 2700 µg/ml von 7525
Nanodrop und 1500 µg/ml durch die
Bradford-Methode mit BSA als
Standard;

Wirt:
Maus

Isotyp:
IgG2a

Immunogen Katalognummer:
AG5016

GenBank-Zugangsnummer:
BC048960

GeneID (NCBI):

Vollständiger Name:
v-yes-1 Yamaguchi sarcoma viral
oncogene homolog 1

Berechnete Masse:
61 kDa

Beobachtete Masse:
62 kDa

Reinigungsmethode:
Protein-A-Reinigung

CloneNo.:
1A12E7

Empfohlene Verdünnungen:
WB 1:1000-1:4000
IHC 1:50-1:500

Anwendungen

Geprüfte Anwendungen:
IHC, WB, ELISA

Getestete Reaktivität:
Human, Ratte

**Hinweis-IHC: Antigendemaskierung mit TE-
Puffer pH 9,0 empfohlen. (*) Wahlweise
kann die Antigendemaskierung auch mit
Citratpuffer pH 6,0 erfolgen.**

Positivkontrollen:

WB: A549-Zellen, A431-Zellen, HeLa-Zellen, HepG2-
Zellen, LNCaP-Zellen, PC-12-Zellen

IHC: humanes Nierengewebe,

Hintergrundinformationen

YES1, also named as p61-Yes and YES, belongs to the protein kinase superfamily, Tyr protein kinase family and SRC subfamily. It promotes infectivity of Neisseria gonorrhoeae in epithelial cells by phosphorylating MCP/CD46. YES1 catalyzes the reaction: ATP + a [protein]-L-tyrosine = ADP + a [protein]-L-tyrosine phosphate.

Lagerung

Lagerungsbedingungen:
Bei -20°C lagern.

Lagerungspuffer:

PBS with 0.1% sodium azide and 50% glycerol pH 7.3.

Aliquotieren ist nicht notwendig bei -20°C Lagerung

*** 20ul-Größen enthalten 0.1% BSA

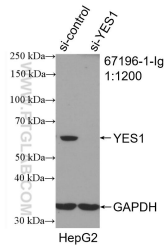
For technical support and original validation data for this product please contact:

T: 1 (888) 4PTGLAB (1-888-478-4522) (toll free
in USA), or 1(312) 455-8498 (outside USA)

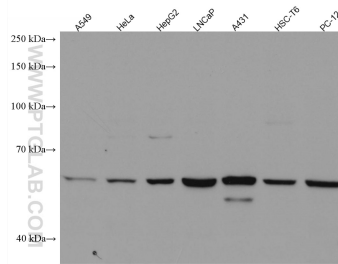
E: proteintech@ptglab.com
W: ptglab.com

This product is exclusively available under Proteintech Group brand and is not available to purchase from any other manufacturer.

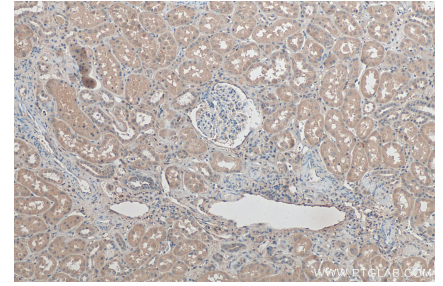
Ausgewählte Validierungsdaten



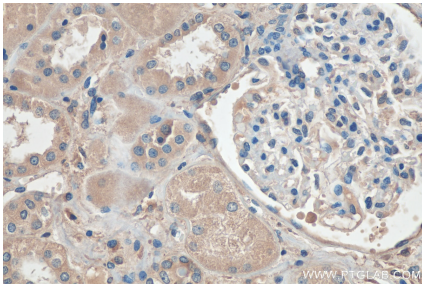
WB result of YES1 antibody (67196-1-Ig; 1:1200; incubated at room temperature for 1.5 hours) with sh-Control and sh-YES1 transfected HepG2 cells.



Various lysates were subjected to SDS PAGE followed by western blot with 67196-1-Ig (YES1 antibody) at dilution of 1:2000 incubated at room temperature for 1.5 hours.



Immunohistochemical analysis of paraffin-embedded human kidney tissue slide using 67196-1-Ig (YES1 antibody) at dilution of 1:200 (under 10x lens). Heat mediated antigen retrieval with Tris-EDTA buffer (pH 9.0).



Immunohistochemical analysis of paraffin-embedded human kidney tissue slide using 67196-1-Ig (YES1 antibody) at dilution of 1:200 (under 40x lens). Heat mediated antigen retrieval with Tris-EDTA buffer (pH 9.0).