

Allgemeine Informationen

Katalog-Nr.: 67083-1-Ig	GenBank-Zugangsnummer: BC132768	Reinigungsmethode: Protein-A-Reinigung
Größe: 150ul , Konzentration: 1300 µg/ml von6506 Nanodrop und 800 µg/ml durch die Bradford-Methode mit BSA als Standard;	GeneID (NCBI): 1C8D10	CloneNo.: 1C8D10
Wirt: Maus	Vollständiger Name: solute carrier family 1 (glial high affinity glutamate transporter), member 2	Empfohlene Verdünnungen: WB 1:1000-1:8000 IHC 1:200-1:800
Isotyp: IgG1	Berechnete Masse: 574 aa, 62 kDa	
Immunogen Katalognummer: AG19816	Beobachtete Masse: 60-70 kDa	

Anwendungen

Geprüfte Anwendungen: IHC, WB, ELISA	Positivkontrollen:
Getestete Reaktivität: Human, Maus, Ratte	WB : Rattenhirngewebe, Maushirngewebe, Ratten- Cerebellum-Gewebe
Hinweis-IHC: Antigendemaskierung mit TE- Puffer pH 9,0 empfohlen. (*) Wahlweise kann die Antigendemaskierung auch mit Citratpuffer pH 6,0 erfolgen.	IHC : Maushirngewebe, Rattenhirngewebe

Hintergrundinformationen

EAAT2 (also known as GLT-1), is encoded by SLC1A2 and is a glutamate transporter which can clear the majority of extracellular glutamate in brain and prevent brain seizures. Three isoforms of EAAT2 exist due to the alternative splicing. In addition to the 65-70 kDa monomer form, 130-150 kDa dimer of EAAT2 can also be observed on SDS-PAGE. (PMID: 22114258)

Lagerung

Lagerungsbedingungen:
Bei -20°C lagern. Nach dem Versand ein Jahr lang stabil
Lagerungspuffer:
PBS mit 0.02% Natriumazid und 50% Glycerin pH 7.3.
Aliquotieren ist nicht notwendig bei -20°C Lagerung

***** 20ul-Größen enthalten 0.1% BSA**

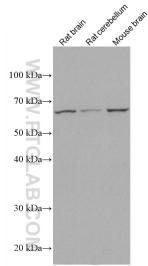
For technical support and original validation data for this product please contact:

T: 1 (888) 4PTGLAB (1-888-478-4522) (toll free
in USA), or 1(312) 455-8498 (outside USA)

E: proteintech@ptglab.com
W: ptglab.com

This product is exclusively available under Proteintech Group brand and is not available to purchase from any other manufacturer.

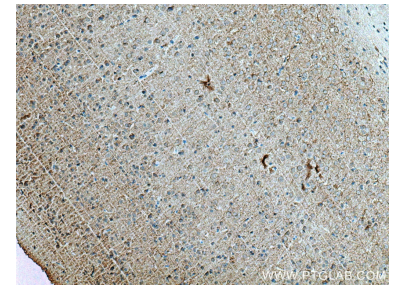
Ausgewählte Validierungsdaten



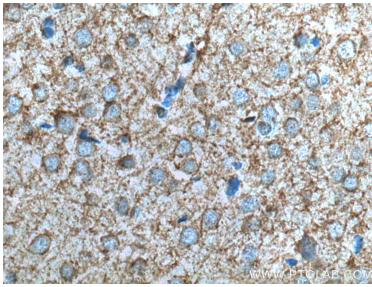
Various lysates were subjected to SDS PAGE followed by western blot with 67083-1-Ig (SLC1A2 antibody) at dilution of 1:4000 incubated at room temperature for 1.5 hours.



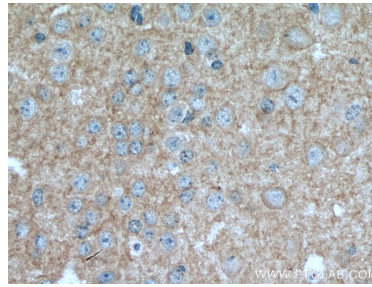
Immunohistochemical analysis of paraffin-embedded mouse brain tissue slide using 67083-1-Ig (EAAT2 antibody) at dilution of 1:400 (under 10x lens). Heat mediated antigen retrieval with Tris-EDTA buffer (pH 9.0).



Immunohistochemical analysis of paraffin-embedded rat brain tissue slide using 67083-1-Ig (EAAT2 antibody) at dilution of 1:1000 (under 10x lens). Heat mediated antigen retrieval with Tris-EDTA buffer (pH 9.0).



Immunohistochemical analysis of paraffin-embedded rat brain tissue slide using 67083-1-Ig (EAAT2 antibody) at dilution of 1:1000 (under 40x lens). Heat mediated antigen retrieval with Tris-EDTA buffer (pH 9.0).



Immunohistochemical analysis of paraffin-embedded mouse brain tissue slide using 67083-1-Ig (EAAT2 antibody) at dilution of 1:400 (under 40x lens). Heat mediated antigen retrieval with Tris-EDTA buffer (pH 9.0).