

Nur für Forschungszwecke

# ANLN Monoklonaler Antikörper

Katalog-Nr.:66643-1-Ig

Vorgestelltes Produkt

3 Publikationen



## Allgemeine Informationen

Katalog-Nr.:  
66643-1-Ig

Größe:

150ul, Konzentration: 1800 µg/ml von54443

Nanodrop und 1000 µg/ml durch die  
Bradford-Methode mit BSA als  
Standard;

Wirt:

Maus

Isotyp:

IgG1

Immunogen Katalognummer:

AG19294

GenBank-Zugangsnummer:

BC034692

GeneID (NCBI):

von54443

Vollständiger Name:

anillin, actin binding protein

Berechnete Masse:

1124 aa, 124 kDa

Beobachtete Masse:

110 kDa-120 kDa

Reinigungsmethode:

Protein-A-Reinigung

CloneNo.:

1B4A8

Empfohlene Verdünnungen:

WB 1:2000-1:10000

## Anwendungen

Geprüfte Anwendungen:

WB, ELISA

In Publikationen genannte Anwendungen:

WB

Getestete Reaktivität:

Human, Maus, Ratte

Zitierte Arten:

Human

Positivkontrollen:

WB : HeLa-Zellen, HEK-293-Zellen, Maushirngewebe,  
MCF-7-Zellen, PC-12-Zellen, Rattenhirngewebe, U-  
251-Zellen

## Hintergrundinformationen

Anillin, an actin-binding protein, is a conserved cleavage furrow component important for cytokinesis. The human anillin protein localizes to the nucleus during interphase, the cortex following nuclear envelope breakdown, and the cleavage furrow during cytokinesis. It interactions with at least two other furrow proteins, actin and the septins through its C-terminal PH domain and N-terminal actin-binding domain. In anillin knockdown cells, the cleavage furrow ingressed but failed to complete the ingression. Anillin has been found to be overexpressed in tumors and may serve as promising marker for pancreatic carcinoma molecular diagnostics as well as a prognostic indicator for non-small cell lung cancers.

## Bemerkenswerte Veröffentlichungen

Verfasser	Pubmed ID	Journal	Anwendung
Xiaofeng Dai	31636652	Front Genet	WB
Min Zhang	32198770	Clin Exp Pharmacol Physiol	WB
Ling Li	32275843	Cell Cycle	WB

## Lagerung

Lagerungsbedingungen:

Bei -20°C lagern. Nach dem Versand ein Jahr lang stabil

Lagerungspuffer:

PBS mit 0.02% Natriumazid und 50% Glycerin pH 7.3.

Aliquotieren ist nicht notwendig bei -20°C Lagerung

\*\*\* 20ul-Größen enthalten 0.1% BSA

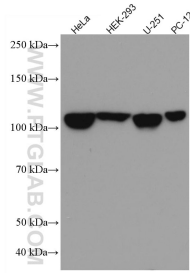
For technical support and original validation data for this product please contact:

T: 1 (888) 4PTGLAB (1-888-478-4522) (toll free  
in USA), or 1(312) 455-8498 (outside USA)

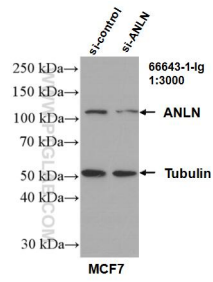
E: proteintech@ptglab.com  
W: ptglab.com

This product is exclusively available under Proteintech Group brand and is not available to purchase from any other manufacturer.

## Ausgewählte Validierungsdaten



Various lysates were subjected to SDS PAGE followed by western blot with 66643-1-Ig (ANLN antibody) at dilution of 1:5000 incubated at room temperature for 1.5 hours.



WB result of ANLN antibody (66643-1-Ig; 1:3000; incubated at room temperature for 1.5 hours) with sh-Control and sh-ANLN transfected MCF-7 cells.