

Nur für Forschungszwecke

FANCL Monoklonaler Antikörper

Katalog-Nr.:66639-1-Ig

Vorgestelltes Produkt

1 Publikationen



Allgemeine Informationen

Katalog-Nr.: 66639-1-Ig	GenBank-Zugangsnummer: BC054517	Reinigungsmethode: Protein-A-Reinigung
Größe: 150ul , Konzentration: 3200 µg/ml von55120 Nanodrop und 2000 µg/ml durch die Bradford-Methode mit BSA als Standard;	GeneID (NCBI): 55120	CloneNo.: 6E2B6
Wirt: Maus	Vollständiger Name: Fanconi anemia, complementation group L	Empfohlene Verdünnungen: WB 1:1000-1:3000 IF 1:400-1:1600
Isotyp: IgG2a	Berechnete Masse: 43 kDa	
Immunogen Katalognummer: AG6192	Beobachtete Masse: 41-43 kDa	

Anwendungen

Geprüfte Anwendungen: IF, WB, ELISA	Positivkontrollen: WB : HeLa-Zellen, HEK-293-Zellen
In Publikationen genannte Anwendungen: WB	IF : HeLa-Zellen,
Getestete Reaktivität: Human	

Hintergrundinformationen

Fanconi anemia (FA) is a hereditary bone marrow failure syndrome associated with developmental defects and cancer predisposition. The FA nuclear core complex consists of FANCA, B, C, E, F, G, L, and M. FANCL is a RING-type E3 ubiquitin ligase that monoubiquitinates FANCD2 and FANCI, a key functional role facilitated by other members of the nuclear core complex (PMID: 23783032). FANCL plays an important role in the repair of cisplatin-induced DNA damage (PMID: 26385482) and participates directly in support of stem cell function (PMID: 23783032). FANCL can be detected as 40-43 kDa (full-length) and ~28 kDa.

Bemerkenswerte Veröffentlichungen

Verfasser	Pubmed ID	Journal	Anwendung
Xinlin Xu	34117478	Nat Struct Mol Biol	WB

Lagerung

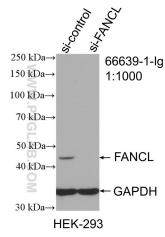
Lagerungsbedingungen:
Bei -20°C lagern. Nach dem Versand ein Jahr lang stabil
Lagerungspuffer:
PBS mit 0.02% Natriumazid und 50% Glycerin pH 7.3.
Aliquotieren ist nicht notwendig bei -20°C Lagerung

*** 20ul-Größen enthalten 0.1% BSA

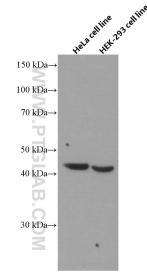
For technical support and original validation data for this product please contact:
T: 1 (888) 4PTGLAB (1-888-478-4522) (toll free in USA), or 1(312) 455-8498 (outside USA)
E: proteintech@ptglab.com
W: ptglab.com

This product is exclusively available under Proteintech Group brand and is not available to purchase from any other manufacturer.

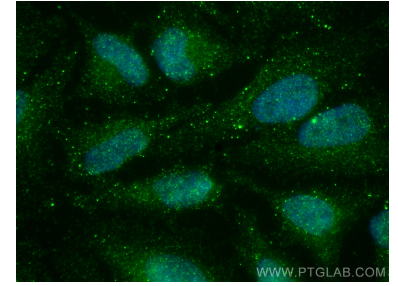
Ausgewählte Validierungsdaten



WB result of FANCL antibody (66639-1-Ig; 1:1000; incubated at room temperature for 1.5 hours) with sh-Control and sh-FANCL transfected HEK-293 cells.



HeLa cells and HEK-293 cells were subjected to SDS PAGE followed by western blot with 66639-1-Ig (FANCL antibody) at dilution of 1:2000 incubated at room temperature for 1.5 hours.



Immunofluorescent analysis of (4% PFA) fixed HeLa cells using FANCL antibody (66639-1-Ig, Clone: 6E2B6) at dilution of 1:800 and CoraLite®488-Conjugated AffiniPure Goat Anti-Mouse IgG(H+L).