

## Allgemeine Informationen

<b>Katalog-Nr.:</b> 66381-1-Ig	<b>GenBank-Zugangsnummer:</b> BC105597	<b>Reinigungsmethode:</b> Protein-G-Reinigung
<b>Größe:</b> 150ul , Konzentration: 1300 µg/ml von28234	<b>GeneID (NCBI):</b> 28234	<b>CloneNo.:</b> 1D9A4
Nanodrop und 1000 µg/ml durch die Bradford-Methode mit BSA als Standard;	<b>Vollständiger Name:</b> solute carrier organic anion transporter family, member 1B3	<b>Empfohlene Verdünnungen:</b> WB 1:1000-1:8000 IHC 1:50-1:500 IF 1:400-1:1600
<b>Wirt:</b> Maus	<b>Berechnete Masse:</b> 702 aa, 77 kDa	
<b>Isotyp:</b> IgG1	<b>Beobachtete Masse:</b> 68-77 kDa	
<b>Immunogen Katalognummer:</b> AG19033		

## Anwendungen

<b>Geprüfte Anwendungen:</b> IF, IHC, WB, ELISA	<b>Positivkontrollen:</b> <b>WB :</b> HepG2-Zellen, BxPC-3-Zellen, Caco-2-Zellen, COLO 320-Zellen, LO2-Zellen, PC-3-Zellen, SMMC-7721-Zellen, SW 1990-Zellen <b>IHC :</b> humanes Leberkarzinomgewebe, <b>IF :</b> HepG2-Zellen,
<b>In Publikationen genannte Anwendungen:</b> WB	
<b>Getestete Reaktivität:</b> Human	
<b>Zitierte Arten:</b> Human, Maus	
<b>Hinweis-IHC: Antigenmaskierung mit TE-Puffer pH 9,0 empfohlen. (*) Wahlweise kann die Antigenmaskierung auch mit Citratpuffer pH 6,0 erfolgen.</b>	

## Hintergrundinformationen

SLCO1B3, also known as OATP8 or OATP1B3, is a member of Organic Anion Transporting Polypeptides (OATPs) which are sodium-independent organic anion transporters mediating the uptake of a wide range of structurally diverse endogenous and exogenous compounds including bile acids, hormone conjugates, peptides, toxins, as well as a multitude of therapeutic drugs. SLCO1B3 is specifically expressed in liver under normal condition, while its expression has also been observed in cancer tissues like colon, prostate and pancreas. The molecular mass of SLCO1B3 is highly dependent on the glycosylation modification (deglycosylated form of 65 kDa, fully-glycosylated form of 120 kDa).

## Bemerkenswerte Veröffentlichungen

Verfasser	Pubmed ID	Journal	Anwendung
Lianghui Zhi	34526411	Aging (Albany NY)	WB
Fayou Yang	30584236	Sci Rep	WB
Bei Wang	37193694	Nat Commun	WB

## Lagerung

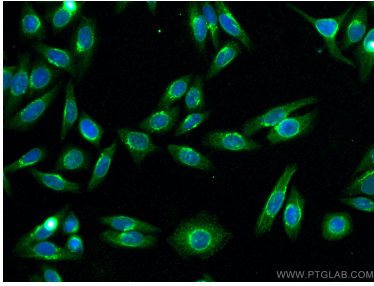
**Lagerungsbedingungen:**  
Bei -20°C lagern. Nach dem Versand ein Jahr lang stabil  
**Lagerungspuffer:**  
PBS mit 0.02% Natriumazid und 50% Glycerin pH 7.3.  
Aliquotieren ist nicht notwendig bei -20°C Lagerung

**\*\*\* 20ul-Größen enthalten 0.1% BSA**

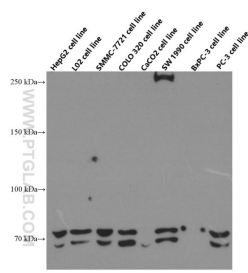
For technical support and original validation data for this product please contact:  
T: 1 (888) 4PTGLAB (1-888-478-4522) (toll free in USA), or 1(312) 455-8498 (outside USA)  
E: [proteintech@ptglab.com](mailto:proteintech@ptglab.com)  
W: [ptglab.com](http://ptglab.com)

**This product is exclusively available under Proteintech Group brand and is not available to purchase from any other manufacturer.**

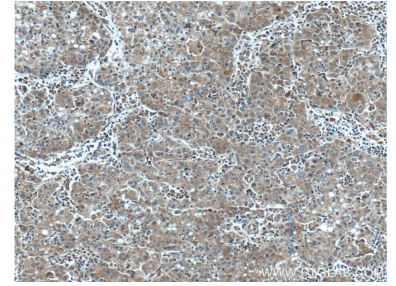
## Ausgewählte Validierungsdaten



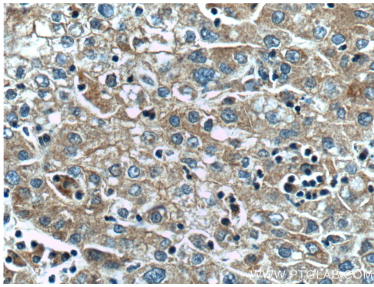
Immunofluorescent analysis of (-20°C Ethanol) fixed HepG2 cells using SLCO1B3 antibody (66381-1-Ig, Clone: 1D9A4) at dilution of 1:800 and CoraLite®488-Conjugated AffiniPure Goat Anti-Mouse IgG(H+L).



Western blot analysis of SLCO1B3 in various cell lines using Proteintech antibody 66381-1-Ig at dilution of 1:4000 incubated at room temperature for 1.5 hours.



Immunohistochemical analysis of paraffin-embedded human liver cancer tissue slide using 66381-1-Ig (SLCO1B3 antibody) at dilution of 1:400 (under 10x lens. Heat mediated antigen retrieval with Tris-EDTA buffer (pH 9.0).



Immunohistochemical analysis of paraffin-embedded human liver cancer tissue slide using 66381-1-Ig (SLCO1B3 antibody) at dilution of 1:400 (under 40x lens. Heat mediated antigen retrieval with Tris-EDTA buffer (pH 9.0).