

Nur für Forschungszwecke

ORM2-Specific Monoklonaler Antikörper

Katalog-Nr.:66217-1-Ig



Allgemeine Informationen

Katalog-Nr.: 66217-1-Ig	GenBank-Zugangsnummer: BC015964	Reinigungsmethode: Protein-A-Reinigung
Größe: 150ul , Konzentration: 1300 µg/ml von5005 Nanodrop und 780 µg/ml durch die Bradford-Methode mit BSA als Standard;	GeneID (NCBI): Vollständiger Name: orosomuoid 2	CloneNo.: 4E9H10
Wirt: Maus	Berechnete Masse: 24 kDa	Empfohlene Verdünnungen: WB 1:500-1:2000 IHC 1:500-1:2000 IF 1:50-1:500
Isotyp: IgG1	Beobachtete Masse: 45 kDa	
Immunogen Katalognummer: AG18984		

Anwendungen

Geprüfte Anwendungen: IF, IHC, WB, ELISA	Positivkontrollen:
Getestete Reaktivität: Human	WB : humanes Plasmagewebe, A549-Zellen
Hinweis-IHC: Antigenmaskierung mit TE-Puffer pH 9,0 empfohlen. (*) Wahlweise kann die Antigenmaskierung auch mit Citratpuffer pH 6,0 erfolgen.	IHC : humanes Leberkarzinomgewebe, humanes Kolonkarzinomgewebe
	IF : HepG2-Zellen,

Hintergrundinformationen

ORM2, also named as AGP2 and OMD 2, belongs to the calycin superfamily and Lipocalin family. It functions as transport protein in the blood stream. ORM2 binds various hydrophobic ligands in the interior of its beta-barrel domain. It also binds synthetic drugs and influences their distribution and availability. ORM2 appears to function in modulating the activity of the immune system during the acute-phase reaction. ORM2 is one of the conserved endoplasmic reticulum membrane proteins which regulating lipid homeostasis and protein quality control. This antibody can specially recognize ORM2. It recognizes a band about 45 kDa in human plasma which may be due to the glycosylation of ORM2 or the dimer formation of the protein.

Lagerung

Lagerungsbedingungen:
Bei -20°C lagern. Nach dem Versand ein Jahr lang stabil

Lagerungspuffer:
PBS mit 0.02% Natriumazid und 50% Glycerin pH 7.3.

Aliquotieren ist nicht notwendig bei -20°C Lagerung

*** 20ul-Größen enthalten 0.1% BSA

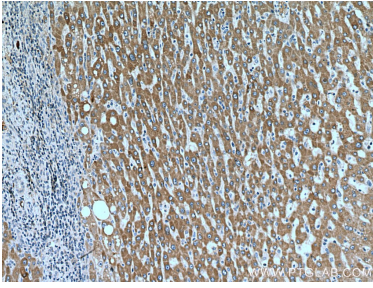
For technical support and original validation data for this product please contact:

T: 1 (888) 4PTGLAB (1-888-478-4522) (toll free in USA), or 1(312) 455-8498 (outside USA)

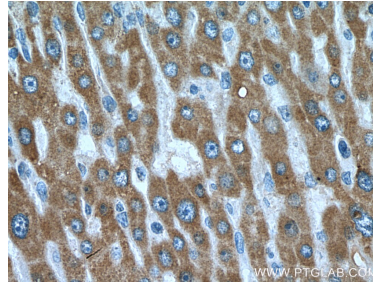
E: proteintech@ptglab.com
W: ptglab.com

This product is exclusively available under Proteintech Group brand and is not available to purchase from any other manufacturer.

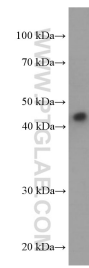
Ausgewählte Validierungsdaten



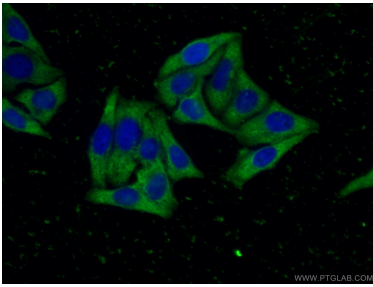
Immunohistochemical analysis of paraffin-embedded human liver cancer tissue slide using 66217-1-Ig (ORM2-Specific antibody) at dilution of 1:1000 (under 10x lens). Heat mediated antigen retrieval with Tris-EDTA buffer (pH 9.0).



Immunohistochemical analysis of paraffin-embedded human liver cancer tissue slide using 66217-1-Ig (ORM2-Specific antibody) at dilution of 1:1000 (under 40x lens). Heat mediated antigen retrieval with Tris-EDTA buffer (pH 9.0).



human plasma were subjected to SDS PAGE followed by western blot with 66217-1-Ig (ORM2-Specific antibody) at dilution of 1:1000 incubated at room temperature for 1.5 hours.



Immunofluorescent analysis of (-20°C Ethanol) fixed HepG2 cells using 66217-1-Ig(ORM2-Specific antibody) at dilution of 1:100 and Alexa Fluor 488-conjugated AffiniPure Goat Anti-Mouse IgG(H+L).