

Nur für Forschungszwecke

Protein C inhibitor Monoklonaler Antikörper

Katalog-Nr.:66030-1-Ig



Allgemeine Informationen

Katalog-Nr.: 66030-1-Ig	GenBank-Zugangsnummer: BC008915	Reinigungsmethode: Protein-A-Reinigung
Größe: 150ul , Konzentration: 1600 µg/ml von5104 Nanodrop und 1320 µg/ml durch die Bradford-Methode mit BSA als Standard;	GeneID (NCBI): von5104	CloneNo.: 2H6G2
Wirt: Maus	Vollständiger Name: serpin peptidase inhibitor, clade A (alpha-1 antiproteinase, antitrypsin), member 5	Empfohlene Verdünnungen: WB 1:500-1:2000 IHC 1:50-1:500 IF 1:200-1:800
Isotyp: IgG2a	Berechnete Masse: 46 kDa	
Immunogen Katalognummer: AG18094	Beobachtete Masse: 46 kDa	

Anwendungen

Geprüfte Anwendungen: IF, IHC, WB, ELISA	Positivkontrollen:
Getestete Reaktivität: Human	WB : Human testis, Gewebe
Hinweis-IHC: Antigenmaskierung mit TE-Puffer pH 9,0 empfohlen. (*) Wahlweise kann die Antigenmaskierung auch mit Citratpuffer pH 6,0 erfolgen.	IHC : humanes Ovarialkarzinomgewebe, IF : humanes Ovarialkarzinomgewebe,

Hintergrundinformationen

SERPINA5 (also called Protein C Inhibitor, PCI) is a serpin type of serine protease inhibitor that is found in many tissues and fluids in human, including blood plasma, seminal plasma and urine. PCI found in blood originates from the liver and is capable of inhibiting several serine proteases involved in the regulation of coagulation and fibrinolysis, including activated protein C, thrombin, factor Xa, various kallikreins and plasminogen activators. PCI has been found to have antimicrobial and antitumor properties and thus appears to be a multi-functional protein.

Lagerung

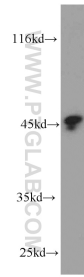
Lagerungsbedingungen:
Bei -20°C lagern. Nach dem Versand ein Jahr lang stabil
Lagerungspuffer:
PBS mit 0.02% Natriumazid und 50% Glycerin pH 7.3.
Aliquotieren ist nicht notwendig bei -20°C Lagerung

*** 20ul-Größen enthalten 0.1% BSA

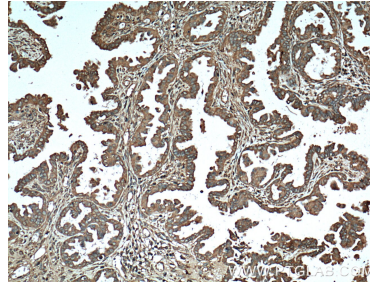
For technical support and original validation data for this product please contact:
T: 1 (888) 4PTGLAB (1-888-478-4522) (toll free in USA), or 1(312) 455-8498 (outside USA)
E: proteintech@ptglab.com
W: ptglab.com

This product is exclusively available under Proteintech Group brand and is not available to purchase from any other manufacturer.

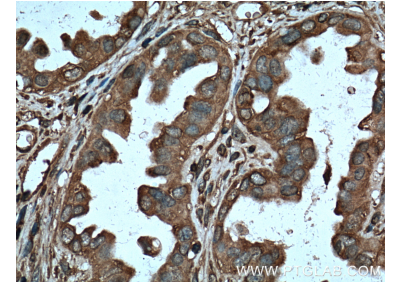
Ausgewählte Validierungsdaten



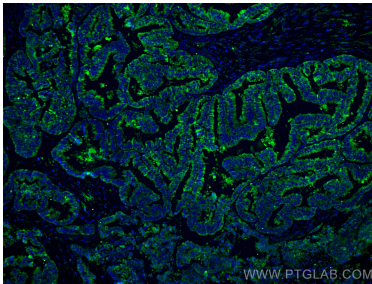
human testis tissue were subjected to SDS PAGE followed by western blot with 66030-1-Ig (Protein C inhibitor antibody) at dilution of 1:1000 incubated at room temperature for 1.5 hours.



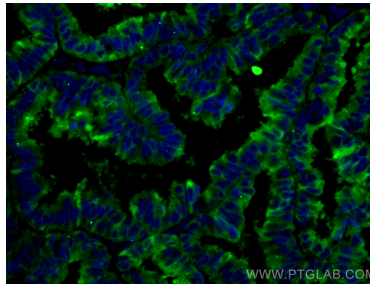
Immunohistochemical analysis of paraffin-embedded human ovary tumor tissue slide using 66030-1-Ig (Protein C inhibitor antibody at dilution of 1:200 (under 10x lens). Heat mediated antigen retrieval with Tris-EDTA buffer (pH 9.0).



Immunohistochemical analysis of paraffin-embedded human ovary tumor tissue slide using 66030-1-Ig (Protein C inhibitor antibody at dilution of 1:200 (under 40x lens). Heat mediated antigen retrieval with Tris-EDTA buffer (pH 9.0).



Immunofluorescent analysis of (4% PFA) fixed human ovary tumor tissue using Protein C inhibitor antibody (66030-1-Ig, Clone: 2H6G2) at dilution of 1:400 and CoraLite®488-Conjugated AffiniPure Goat Anti-Mouse IgG(H+L).



Immunofluorescent analysis of (4% PFA) fixed human ovary tumor tissue using Protein C inhibitor antibody (66030-1-Ig, Clone: 2H6G2) at dilution of 1:400 and CoraLite®488-Conjugated AffiniPure Goat Anti-Mouse IgG(H+L).