

## Allgemeine Informationen

<b>Katalog-Nr.:</b> 66015-2-Ig	<b>GenBank-Zugangsnummer:</b> BC015938	<b>Reinigungsmethode:</b> Protein-A-Reinigung
<b>Größe:</b> 150ul , Konzentration: 1000 µg/ml von10741 Nanodrop und 813 µg/ml durch die Bradford-Methode mit BSA als Standard;	<b>GeneID (NCBI):</b> 10741	<b>CloneNo.:</b> 3D5E11
<b>Wirt:</b> Maus	<b>Vollständiger Name:</b> retinoblastoma binding protein 9	<b>Empfohlene Verdünnungen:</b> WB 1:1000-1:6000 IHC 1:50-1:500 IF 1:20-1:200
<b>Isotyp:</b> IgG2b	<b>Berechnete Masse:</b> 186 aa, 21 kDa	
<b>Immunogen Katalognummer:</b> AG17864	<b>Beobachtete Masse:</b> 22 kDa	

## Anwendungen

<b>Geprüfte Anwendungen:</b> IF, IHC, WB, ELISA	<b>Positivkontrollen:</b>
<b>Getestete Reaktivität:</b> Hausschwein, Human, Maus, Ratte	<b>WB :</b> HeLa-Zellen, A375-Zellen, A549-Zellen, BxPC-3-Zellen, Hausschwein-Hirngewebe, HepG2-Zellen, Maushirngewebe, MCF-7-Zellen, Rattenhirngewebe
<b>Hinweis-IHC: Antigendemaskierung mit TE-Puffer pH 9,0 empfohlen. (*) Wahlweise kann die Antigendemaskierung auch mit Citratpuffer pH 6,0 erfolgen.</b>	<b>IHC :</b> humanes Pankreaskarzinomgewebe, <b>IF :</b> A549-Zellen,

## Hintergrundinformationen

RBBP9, also named as BOG, RBBP10, RBBP-9, RBBP-10 and Protein BOG, belongs to the RBBP9 family. It may play a role in the transformation process due to its capacity to confer resistance to the growth-inhibitory effects of TGF-β1 through interaction with retinoblastoma and the subsequent displacement of E2F-1. RBBP9 is a tumor-associated serine hydrolase activity required for pancreatic neoplasia. It mediates suppression of TGF-β signaling is required for E-cadherin expression as loss of the serine hydrolase activity leads to a reduction in E-cadherin levels and a concomitant decrease in the integrity of tumor cell-cell junctions. RBBP9 protein levels were equivalent in paired primary tumor and nonneoplastic specimens (PMID:20080647)

## Lagerung

**Lagerungsbedingungen:**  
Bei -20°C lagern. Nach dem Versand ein Jahr lang stabil

**Lagerungspuffer:**  
PBS mit 0.02% Natriumazid und 50% Glycerin pH 7.3.

**Aliquotieren ist nicht notwendig bei -20°C Lagerung**

\*\*\* 20ul-Größen enthalten 0.1% BSA

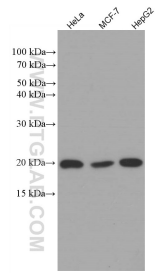
For technical support and original validation data for this product please contact:

T: 1 (888) 4PTGLAB (1-888-478-4522) (toll free in USA), or 1(312) 455-8498 (outside USA)

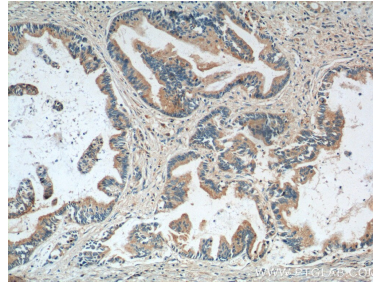
E: proteintech@ptglab.com  
W: ptglab.com

This product is exclusively available under Proteintech Group brand and is not available to purchase from any other manufacturer.

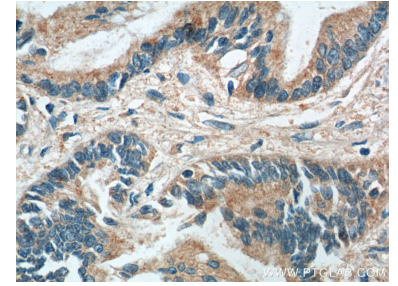
## Ausgewählte Validierungsdaten



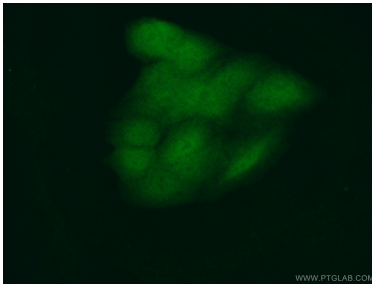
Various lysates were subjected to SDS PAGE followed by western blot with 66015-2-Ig (RBBP9 antibody) at dilution of 1:3000 incubated at room temperature for 1.5 hours.



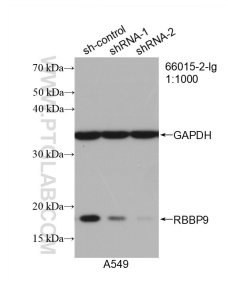
Immunohistochemical analysis of paraffin-embedded human pancreas cancer tissue slide using 66015-2-Ig (RBBP9 Antibody) at dilution of 1:200 (under 10x lens). Heat mediated antigen retrieval with Tris-EDTA buffer (pH 9.0).



Immunohistochemical analysis of paraffin-embedded human pancreas cancer tissue slide using 66015-2-Ig (RBBP9 Antibody) at dilution of 1:200 (under 40x lens). Heat mediated antigen retrieval with Tris-EDTA buffer (pH 9.0).



Immunofluorescent analysis of (10% Formaldehyde) fixed A549 cells using 66015-2-Ig (RBBP9 antibody) at dilution of 1:50 and Alexa Fluor 488-conjugated AffiniPure Goat Anti-Mouse IgG(H+L).



WB result of RBBP9 antibody (66015-2-Ig; 1:1000; incubated at room temperature for 1.5 hours) with sh-Control and sh-RBBP9 transfected A549 cells.