

Nur für Forschungszwecke

CD64 Monoklonaler Antikörper

Katalog-Nr.:65253-1-Ig



Allgemeine Informationen

Katalog-Nr.: 65253-1-Ig	GenBank-Zugangsnummer: BC032634	Reinigungsmethode: Affinitätsreinigung
Größe: 100ug, 0.5 mg/mL	GeneID (NCBI): 2209	CloneNo.: 10.1
Wirt: Maus	Vollständiger Name: Fc fragment of IgG, high affinity Ia, receptor (CD64)	
Isotyp: IgG1, kappa	Berechnete Masse: 374 aa, 43 kDa	

Anwendungen

Geprüfte Anwendungen:
FC, ELISA

Getestete Reaktivität:
Human

Hintergrundinformationen

Fcγ receptor comprise a multigene family of integral membrane glycoproteins that exhibit complex activation or inhibitory effects on cell functions after aggregation by complexed immunoglobulin G (IgG) (PMID: 17005690). CD64, also known as Fcγ R1A, is a high-affinity receptor for the Fc region of IgG. It is expressed by monocytes/macrophages, activated neutrophils, dendritic cells, and early myeloid cells (PMID: 23293080; 19642859; 7680917). CD64 functions in both innate and adaptive immune responses.

Lagerung

Lagerungsbedingungen:
Store at 2-8°C. Stable for one year after shipment.

Lagerungspuffer:
PBS with 0.09% sodium azide.

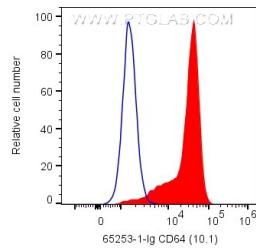
For technical support and original validation data for this product please contact:

T: 1 (888) 4PTGLAB (1-888-478-4522) (toll free in USA), or 1(312) 455-8498 (outside USA)

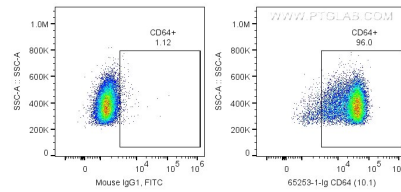
E: proteintech@ptglab.com
W: ptglab.com

This product is exclusively available under Proteintech Group brand and is not available to purchase from any other manufacturer.

Ausgewählte Validierungsdaten



1X10⁶ human PBMCs were surface stained with 0.2 ug Anti-Human CD64 (65253-1-Ig, Clone:10.1) and CoraLite®488-Conjugated AffiniPure Goat Anti-Mouse IgG(H+L) at dilution 1:1000 (red), or CoraLite®488-Conjugated Mouse IgG1 Isotype Control. Cells were not fixed. Monocytes were gated.



1X10⁶ human PBMCs were surface stained with 0.2 ug Anti-Human CD64 (65253-1-Ig, Clone:10.1) and CoraLite®488-Conjugated AffiniPure Goat Anti-Mouse IgG(H+L) at dilution 1:1000, or CoraLite®488-Conjugated Mouse IgG1 Isotype Control. Cells were not fixed. Monocytes were gated.