

Nur für Forschungszwecke

# Chromogranin A Monoklonaler Antikörper



Katalog-Nr.: 60135-2-Ig **1 Publikationen**

## Allgemeine Informationen

<b>Katalog-Nr.:</b> 60135-2-Ig	<b>GenBank-Zugangsnummer:</b> BC006459	<b>Reinigungsmethode:</b> Protein-G-Reinigung
<b>Größe:</b> 150ul, Konzentration: 1000 µg/ml von1113 Nanodrop;	<b>GeneID (NCBI):</b> 2A7D11	<b>CloneNo.:</b> 2A7D11
<b>Wirt:</b> Maus	<b>Vollständiger Name:</b> chromogranin A (parathyroid secretory protein 1)	<b>Empfohlene Verdünnungen:</b> WB 1:1000-1:6000 IHC 1:1000-1:4000 IF 1:200-1:800
<b>Isotyp:</b> IgG1	<b>Berechnete Masse:</b> 51 kDa	
<b>Immunogen Katalognummer:</b> AG0807	<b>Beobachtete Masse:</b> 50 kDa	

## Anwendungen

### Geprüfte Anwendungen:

IF, IHC, WB, ELISA

### In Publikationen genannte Anwendungen:

IF

### Getestete Reaktivität:

Hausschwein, Human, Maus, Ratte

### Zitierte Arten:

Maus

**Hinweis-IHC: Antigenmaskierung mit TE-Puffer pH 9,0 empfohlen. (\*) Wahlweise kann die Antigenmaskierung auch mit Citratpuffer pH 6,0 erfolgen.**

### Positivkontrollen:

**WB:** Maus-Pankreasgewebe, BxPC-3-Zellen, Hausschwein-Nebennierengewebe, Hausschwein-Pankreasgewebe, Neuro-2a-Zellen, PC-12-Zellen, SH-SY5Y-Zellen

**IHC:** humanes Pankreaskarzinomgewebe, humanes Kolongewebe

**IF:** humanes Pankreaskarzinomgewebe, Neuro-2a-Zellen

## Hintergrundinformationen

Chromogranin A is a member of the granin family of neuroendocrine secretory proteins. It is located in secretory vesicles of neurons and endocrine cells. Chromogranin A is the precursor to several functional peptides including vasostatin, pancreastatin, catestatin and parastatin. These peptides negatively modulate the neuroendocrine function of the releasing cell (autocrine) or nearby cells (paracrine). CgA is one of the most used tumor markers in NET's (neuroendocrine tumors), and elevated CgA concentrations have been demonstrated in serum or plasma of patients with different types of these tumors.

## Bemerkenswerte Veröffentlichungen

Verfasser	Pubmed ID	Journal	Anwendung
Yalan Xu	35841025	Stem Cell Res Ther	IF

## Lagerung

### Lagerungsbedingungen:

Bei -20°C lagern. Nach dem Versand ein Jahr lang stabil

### Lagerungspuffer:

PBS mit 0.02% Natriumazid und 50% Glycerin pH 7.3.

Aliquotieren ist nicht notwendig bei -20°C Lagerung

**\*\*\* 20ul-Größen enthalten 0.1% BSA**

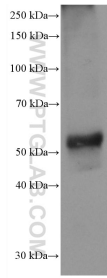
For technical support and original validation data for this product please contact:

T: 1 (888) 4PTGLAB (1-888-478-4522) (toll free in USA), or 1(312) 455-8498 (outside USA)

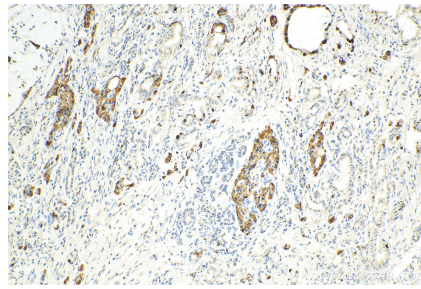
E: proteintech@ptglab.com  
W: ptglab.com

**This product is exclusively available under Proteintech Group brand and is not available to purchase from any other manufacturer.**

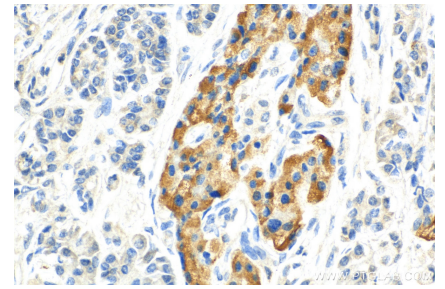
## Ausgewählte Validierungsdaten



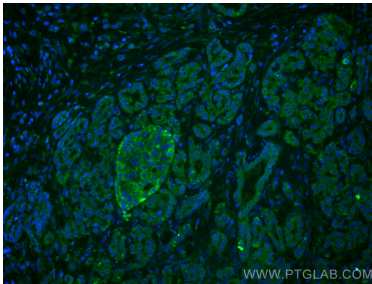
mouse pancreas tissue were subjected to SDS PAGE followed by western blot with 60135-2-Ig (CHGA antibody) at dilution of 1:3000 incubated at room temperature for 1.5 hours.



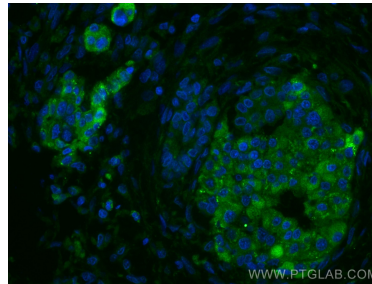
Immunohistochemical analysis of paraffin-embedded human pancreas cancer tissue slide using 60135-2-Ig (CHGA antibody) at dilution of 1:2000 (under 10x lens). Heat mediated antigen retrieval with Tris-EDTA buffer (pH 9.0).



Immunohistochemical analysis of paraffin-embedded human pancreas cancer tissue slide using 60135-2-Ig (CHGA antibody) at dilution of 1:2000 (under 40x lens). Heat mediated antigen retrieval with Tris-EDTA buffer (pH 9.0).



Immunofluorescent analysis of (4% PFA) fixed human pancreas cancer tissue using Chromogranin A antibody (60135-2-Ig, Clone: 2A7D11 ) at dilution of 1:400 and CoraLite®488-Conjugated AffiniPure Goat Anti-Mouse IgG(H+L).



Immunofluorescent analysis of (4% PFA) fixed human pancreas cancer tissue using Chromogranin A antibody (60135-2-Ig, Clone: 2A7D11 ) at dilution of 1:400 and CoraLite®488-Conjugated AffiniPure Goat Anti-Mouse IgG(H+L).