

## Allgemeine Informationen

**Katalog-Nr.:**

55005-1-AP

**Größe:**

150ul, Konzentration: 700 µg/ml von Nanodrop und 553 µg/ml durch die Bradford-Methode mit BSA als Standard;

**Wirt:**

Kaninchen

**Isotyp:**

IgG

**GenBank-Zugangsnummer:**

NM\_015048

**GeneID (NCBI):**

23067

**Vollständiger Name:**

SET domain containing 1B

**Berechnete Masse:**

209 kDa

**Beobachtete Masse:**

250-260 kDa, 450 kDa

**Reinigungsmethode:**

Antigen-Affinitätsreinigung

**Empfohlene Verdünnungen:**

WB 1:500-1:1000  
 IP 0.5-4.0 µg für IP und 1:200-1:1000 für WB  
 IHC 1:20-1:200  
 IF 1:50-1:500

## Anwendungen

**Geprüfte Anwendungen:**

IF, IHC, IP, WB, ELISA

**In Publikationen genannte Anwendungen:**

ChIP, IHC, WB

**Getestete Reaktivität:**

Human, Maus

**Zitierte Arten:**

Human, Maus

**Positivkontrollen:**

WB : humanes Hirngewebe, Mauslebergewebe, MCF-7-Zellen

IP : MCF-7-Zellen,

IHC : humanes Mammakarzinomgewebe, humanes Ovarialkarzinomgewebe

IF : MCF-7-Zellen,

**Hinweis-IHC: Antigendemaskierung mit TE-Puffer pH 9,0 empfohlen. (\*) Wahlweise kann die Antigendemaskierung auch mit Citratpuffer pH 6,0 erfolgen.**

## Hintergrundinformationen

SETD1B, also named as KMT2G. Set1B associates with a about 450 kDa complex that contains all five non-catalytic components of the Set1A complex, including CFP1, Rbbp5, Ash2, Wdr5, and Wdr82. The complex is a histone methyltransferase that produces trimethylated histone H3 at Lys4. Set1B is widely expressed, and localize to a largely non-overlapping set of euchromatic nuclear speckles, suggesting that Set1B bind to a unique set of target genes and thus make non-redundant contributions to the epigenetic control of chromatin structure and gene expression (PMID: 17355966). The antibody is specific to SETD1B and, in westernblotting experiments, two specific bands can be detected, about 250 kDa, 450 kDa respectively, in addition, a unknown band around 70 kDa. This antibody is a rabbit polyclonal antibody raised against a region of human SETD1B.

## Bemerkenswerte Veröffentlichungen

Verfasser	Pubmed ID	Journal	Anwendung
Li Chen	36580757	Int Immunopharmacol	WB,IHC,ChIP
Chen Chen	34884975	Int J Mol Sci	WB
Yesim Bilmez	35445296	Histochem Cell Biol	IHC

## Lagerung

**Lagerungsbedingungen:**

Bei -20°C lagern.

**Lagerungspuffer:**

PBS mit 0.02% Natriumazid und 50% Glycerin pH 7.3.

Aliquotieren ist nicht notwendig bei -20°C Lagerung

\*\*\* 20ul-Größen enthalten 0.1% BSA

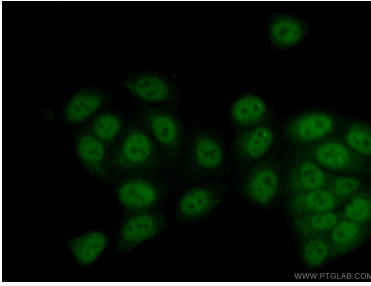
For technical support and original validation data for this product please contact:

T: 1 (888) 4PTGLAB (1-888-478-4522) (toll free in USA), or 1(312) 455-8498 (outside USA)

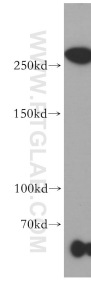
E: [proteintech@ptglab.com](mailto:proteintech@ptglab.com)  
 W: [ptglab.com](http://ptglab.com)

This product is exclusively available under Proteintech Group brand and is not available to purchase from any other manufacturer.

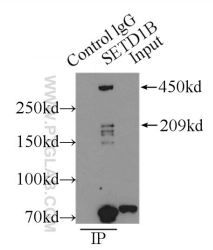
## Ausgewählte Validierungsdaten



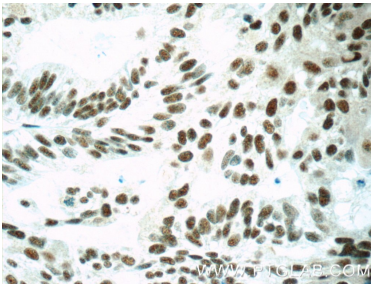
Immunofluorescent analysis of (4% PFA) fixed MCF-7 cells using 55005-1-AP (SETD1B antibody) at dilution of 1:50 and Alexa Fluor 488-conjugated AffiniPure Goat Anti-Rabbit IgG(H+L).



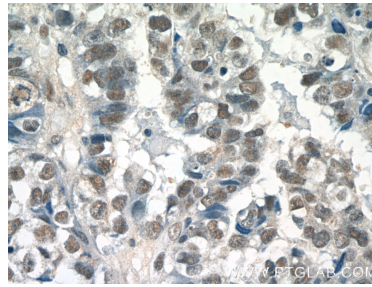
human brain tissue were subjected to SDS PAGE followed by western blot with 55005-1-AP (SETD1B antibody) at dilution of 1:800 incubated at room temperature for 1.5 hours.



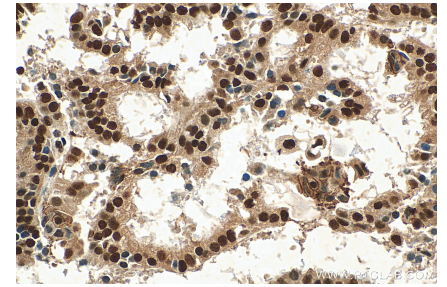
IP Result of anti-SETD1B (IP:55005-1-AP, 5ug; Detection:55005-1-AP 1:300) with MCF-7 cells lysate 3250ug.



Immunohistochemical analysis of paraffin-embedded human ovary tumor tissue slide using 55005-1-AP (SETD1B Antibody) at dilution of 1:50 (under 40x lens).



Immunohistochemical analysis of paraffin-embedded human breast cancer tissue slide using 55005-1-AP (SETD1B Antibody) at dilution of 1:50 (under 40x lens).



Immunohistochemical analysis of paraffin-embedded human ovary tumor tissue slide using 55005-1-AP (SETD1B antibody) at dilution of 1:200 (under 40x lens). Heat mediated antigen retrieval with Tris-EDTA buffer (pH 9.0).