

Nur für Forschungszwecke

HIV-1-P24 Polyklonaler Antikörper

Katalog-Nr.:30168-1-AP



Allgemeine Informationen

Katalog-Nr.: 30168-1-AP	GenBank-Zugangsnummer: NP_057850	Reinigungsmethode: Antigen-Affinitätsreinigung
Größe: 150ul , Konzentration: 450 µg/ml von Nanodrop;	GeneID (NCBI): 155030	Empfohlene Verdünnungen: WB 1:1000-1:6000
Wirt: Kaninchen	Vollständiger Name: Gag polyprotein	
Isotyp: IgG	Berechnete Masse: 24 kDa	
Immunogen Katalognummer: AG32891		

Anwendungen

Geprüfte Anwendungen: WB, ELISA	Positivkontrollen: WB : Recombinant protein,
Getestete Reaktivität: Rekombinantes Protein	

Hintergrundinformationen

The HIV virus is composed of core RNA, capsid, and the outermost envelope. Among them, the capsid is only composed of P24 protein, which is the product of structural gene GAG. GAG encodes a 55kda GAG protein P55, which is cleaved into capsid P24 by protease H. P24 surrounds the core genomic RNA of the HIV virus particles, forming a firm conical nucleocapsid complex. In addition, due to the high conservativeness of the GAG gene sequence, the P24 protein amino acid sequence is also highly conservative in different strains of HIV, so it can be used as a detection of antigen in HIV infection.

Lagerung

Lagerungsbedingungen:
Bei -20°C lagern. Nach dem Versand ein Jahr lang stabil
Lagerungspuffer:
PBS mit 0.02% Natriumazid und 50% Glycerin pH 7.3.
Aliquotieren ist nicht notwendig bei -20°C Lagerung

*** 20ul-Größen enthalten 0.1% BSA

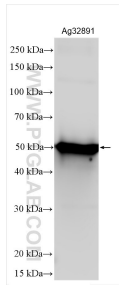
For technical support and original validation data for this product please contact:

T: 1 (888) 4PTGLAB (1-888-478-4522) (toll free
in USA), or 1(312) 455-8498 (outside USA)

E: proteintech@ptglab.com
W: ptglab.com

This product is exclusively available under Proteintech Group brand and is not available to purchase from any other manufacturer.

Ausgewählte Validierungsdaten



Recombinant protein were subjected to SDS PAGE followed by western blot with 30168-1-AP (HIV-1-P24 antibody) at dilution of 1:3000 incubated at room temperature for 1.5 hours.