

Nur für Forschungszwecke

NHE1 Polyklonaler Antikörper

Katalog-Nr.:29761-1-AP



Allgemeine Informationen

Katalog-Nr.: 29761-1-AP	GenBank-Zugangsnummer: NM_003047	Reinigungsmethode: Antigen-Affinitätsreinigung
Größe: 150ul , Konzentration: 700 µg/ml von Nanodrop;	GeneID (NCBI): 6548	Empfohlene Verdünnungen: WB 1:1000-1:4000 IHC 1:50-1:500
Wirt: Kaninchen	Vollständiger Name: solute carrier family 9 (sodium/hydrogen exchanger), member 1	
Isotyp: IgG	Berechnete Masse: 91 kDa	
Immunogen Katalognummer: AG31192	Beobachtete Masse: 90-100 kDa	

Anwendungen

Geprüfte Anwendungen: IHC, WB, ELISA	Positivkontrollen:
Getestete Reaktivität: Human, Maus, Ratte	WB : Maushirngewebe, Mausherzgewebe, Rattenherzgewebe, Rattenhirngewebe
Hinweis-IHC: Antigendemaskierung mit TE-Puffer pH 9,0 empfohlen. (*) Wahlweise kann die Antigendemaskierung auch mit Citratpuffer pH 6,0 erfolgen.	IHC : humanes Magengewebe,

Hintergrundinformationen

NHE1, also named as SLC9A1, encodes an Na⁺/H⁺ antiporter that is a membrane-bound enzyme involved in regulating pH of vertebrate cells. NHE1 regulates a number of cell behaviors, including adhesion, shape determination, migration, and proliferation (PMID:11807182). It is inhibited by the non-specific diuretic drug amiloride and activated by growth factors, mitogens, neurotransmitters, tumor promoters, and others (PubMed: 2846238). NHE1 is expressed in heart where it contributes to cardiomyocyte pH homeostasis (PMID: 12832126, PMID: 23709596).

Lagerung

Lagerungsbedingungen:
Bei -20°C lagern. Nach dem Versand ein Jahr lang stabil
Lagerungspuffer:
PBS mit 0.02% Natriumazid und 50% Glycerin pH 7.3.
Aliquotieren ist nicht notwendig bei -20°C Lagerung

*** 20ul-Größen enthalten 0.1% BSA

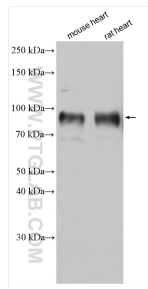
For technical support and original validation data for this product please contact:

T: 1 (888) 4PTGLAB (1-888-478-4522) (toll free
in USA), or 1(312) 455-8498 (outside USA)

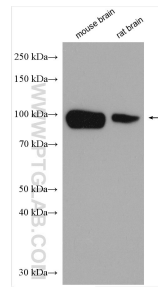
E: proteintech@ptglab.com
W: ptglab.com

This product is exclusively available under Proteintech Group brand and is not available to purchase from any other manufacturer.

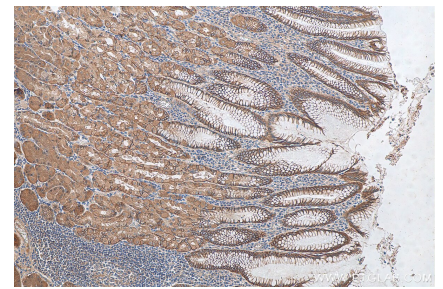
Ausgewählte Validierungsdaten



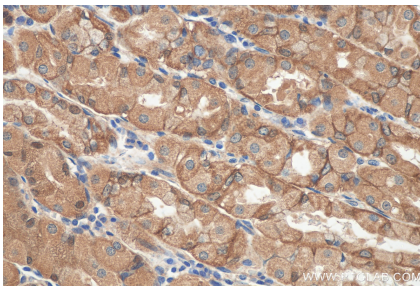
Various lysates were subjected to SDS PAGE followed by western blot with 29761-1-AP (NHE1 antibody) at dilution of 1:1000 incubated at room temperature for 1.5 hours.



Various lysates were subjected to SDS PAGE followed by western blot with 29761-1-AP (NHE1 antibody) at dilution of 1:2000 incubated at room temperature for 1.5 hours.



Immunohistochemical analysis of paraffin-embedded human stomach tissue slide using 29761-1-AP (NHE1 antibody) at dilution of 1:200 (under 10x lens).



Immunohistochemical analysis of paraffin-embedded human stomach tissue slide using 29761-1-AP (NHE1 antibody) at dilution of 1:200 (under 40x lens).