

Nur für Forschungszwecke

# KLF10 Polyklonaler Antikörper

Katalog-Nr.:29709-1-AP



## Allgemeine Informationen

<b>Katalog-Nr.:</b> 29709-1-AP	<b>GenBank-Zugangsnummer:</b> BC011538	<b>Reinigungsmethode:</b> Antigen-Affinitätsreinigung
<b>Größe:</b> 150ul , Konzentration: 600 µg/ml von Nanodrop;	<b>GeneID (NCBI):</b> 7071	<b>Empfohlene Verdünnungen:</b> WB 1:1000-1:6000
<b>Wirt:</b> Kaninchen	<b>Vollständiger Name:</b> Krueppel-like factor 10	
<b>Isotyp:</b> IgG	<b>Berechnete Masse:</b> 469 aa, 51 kDa	
<b>Immunogen Katalognummer:</b> AG31772	<b>Beobachtete Masse:</b> 52-75 kDa	

## Anwendungen

<b>Geprüfte Anwendungen:</b> WB, ELISA	<b>Positivkontrollen:</b> WB : K-562-Zellen, Jurkat-Zellen, MCF-7-Zellen
<b>Getestete Reaktivität:</b> Human	

## Hintergrundinformationen

KLF10 (Krueppel-like factor 10), also known as TIEG1, is a transcription factor that plays a role in the regulation of cell growth. KLF10 plays a role in the response to TGF beta (through the TGF beta/Smad signalling pathway) and estrogen. KLF10 has been shown to have a role in skeletal disease (osteopenia/osteoporosis), hypertrophic cardiomyopathy, and breast and prostate cancer. KLF10 can be detected 52-75 kDa by glycosylation (PMID: 21262377, PMID: 30026232).

## Lagerung

**Lagerungsbedingungen:**  
Bei -20°C lagern. Nach dem Versand ein Jahr lang stabil  
**Lagerungspuffer:**  
PBS mit 0.02% Natriumazid und 50% Glycerin pH 7.3.  
Aliquotieren ist nicht notwendig bei -20°C Lagerung

\*\*\* 20ul-Größen enthalten 0.1% BSA

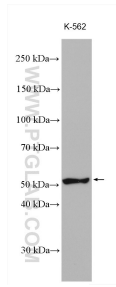
For technical support and original validation data for this product please contact:

T: 1 (888) 4PTGLAB (1-888-478-4522) (toll free  
in USA), or 1(312) 455-8498 (outside USA)

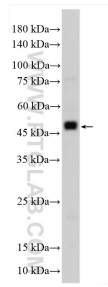
E: proteintech@ptglab.com  
W: ptglab.com

This product is exclusively available under Proteintech Group brand and is not available to purchase from any other manufacturer.

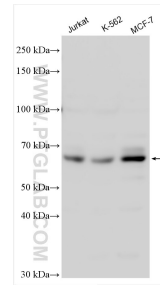
## Ausgewählte Validierungsdaten



K-562 cells were subjected to SDS PAGE followed by western blot with 29709-1-AP (KLF10 antibody) at dilution of 1:3000 incubated at room temperature for 1.5 hours.



Jurkat cells were subjected to SDS PAGE followed by western blot with 29709-1-AP (KLF10 antibody) at dilution of 1:2000 incubated at room temperature for 1.5 hours.



Various lysates were subjected to SDS PAGE followed by western blot with 29709-1-AP (KLF10 antibody) at dilution of 1:8000 incubated at room temperature for 1.5 hours.