

Nur für Forschungszwecke

CDC2L1 Polyklonaler Antikörper

Katalog-Nr.:28613-1-AP

Vorgestelltes Produkt



Allgemeine Informationen

Katalog-Nr.: 28613-1-AP	GenBank-Zugangsnummer: NM_001787	Reinigungsmethode: Antigen-Affinitätsreinigung
Größe: 150ul , Konzentration: 850 µg/ml von Nanodrop;	GeneID (NCBI): 984	Empfohlene Verdünnungen: WB 1:2000-1:16000 IHC 1:50-1:500 IF 1:50-1:500
Wirt: Kaninchen	Vollständiger Name: cell division cycle 2-like 1 (PITSLRE proteins)	
Isotyp: IgG	Berechnete Masse: 93 kDa	
Immunogen Katalognummer: AG28743	Beobachtete Masse: 110 kDa	

Anwendungen

Geprüfte Anwendungen:

IF, IHC, WB, ELISA

Getestete Reaktivität:

Human

Hinweis-IHC: Antigendemaskierung mit TE-Puffer pH 9,0 empfohlen. (*) Wahlweise kann die Antigendemaskierung auch mit Citratpuffer pH 6,0 erfolgen.

Positivkontrollen:

WB : HEK-293-Zellen, HeLa-Zellen, HepG2-Zellen, Jurkat-Zellen, SKOV-3-Zellen

IHC : humanes Lungenkarzinomgewebe,

IF : HeLa-Zellen,

Hintergrundinformationen

CDK11 is encoded by two highly homologous genes known as CDC2L1 and CDC2L2. Due to the distinct structure and alternative RNA splicing, the CDC2L gene can produce three different CDK11 isoforms, a larger 110 kDa protein isoform, a mitosis-specific 58 kDa isoform, and a smaller apoptosis-specific 46 kDa isoform.(PMID 27049727)

Lagerung

Lagerungsbedingungen:

Bei -20°C lagern. Nach dem Versand ein Jahr lang stabil

Lagerungspuffer:

PBS mit 0.02% Natriumazid und 50% Glycerin pH 7.3.

Aliquotieren ist nicht notwendig bei -20°C Lagerung

***** 20ul-Größen enthalten 0.1% BSA**

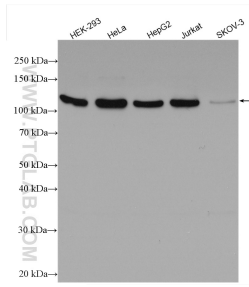
For technical support and original validation data for this product please contact:

T: 1 (888) 4PTGLAB (1-888-478-4522) (toll free in USA), or 1(312) 455-8498 (outside USA)

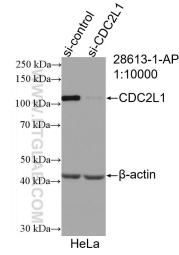
E: proteintech@ptglab.com
W: ptglab.com

This product is exclusively available under Proteintech Group brand and is not available to purchase from any other manufacturer.

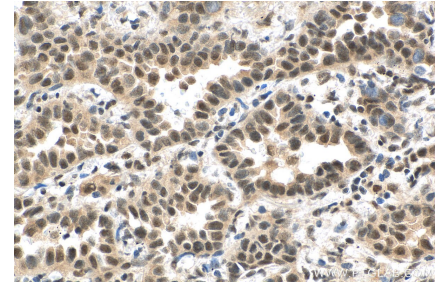
Ausgewählte Validierungsdaten



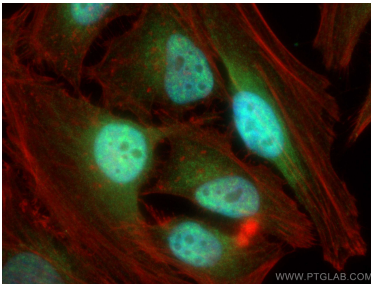
Various lysates were subjected to SDS PAGE followed by western blot with 28613-1-AP (CDC2L1 antibody) at dilution of 1:8000 incubated at room temperature for 1.5 hours.



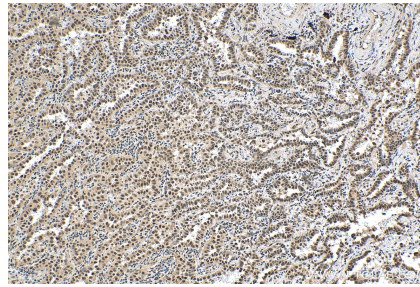
WB result of CDC2L1 antibody (28613-1-AP; 1:10000; incubated at room temperature for 1.5 hours) with sh-Control and sh-CDC2L1 transfected HeLa cells.



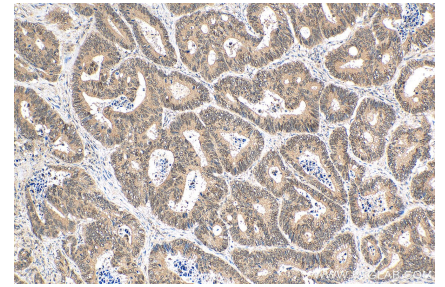
Immunohistochemical analysis of paraffin-embedded human lung cancer tissue slide using 28613-1-AP (CDC2L1 antibody) at dilution of 1:200 (under 40x lens). Heat mediated antigen retrieval with Tris-EDTA buffer (pH 9.0).



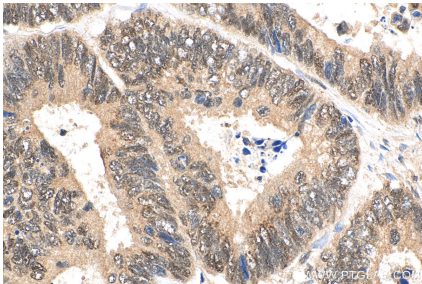
Immunofluorescent analysis of (4% PFA) fixed HeLa cells using CDC2L1 antibody (28613-1-AP) at dilution of 1:200 and CoralLite@488-Conjugated AffiniPure Goat Anti-Rabbit IgG(H+L), CL594-Phalloidin (red).



Immunohistochemical analysis of paraffin-embedded human lung cancer tissue slide using 28613-1-AP (CDC2L1 antibody) at dilution of 1:200 (under 10x lens). Heat mediated antigen retrieval with Tris-EDTA buffer (pH 9.0).



Immunohistochemical analysis of paraffin-embedded human colon cancer tissue slide using 28613-1-AP (CDC2L1 antibody) at dilution of 1:200 (under 10x lens). Heat mediated antigen retrieval with Tris-EDTA buffer (pH 9.0).



Immunohistochemical analysis of paraffin-embedded human colon cancer tissue slide using 28613-1-AP (CDC2L1 antibody) at dilution of 1:200 (under 40x lens). Heat mediated antigen retrieval with Tris-EDTA buffer (pH 9.0).