

Nur für Forschungszwecke

DLL1 Polyklonaler Antikörper

Katalog-Nr.: 28544-1-AP



Allgemeine Informationen

Katalog-Nr.: 28544-1-AP	GenBank-Zugangsnummer: NM_005618	Reinigungsmethode: Antigen-Affinitätsreinigung
Größe: 150ul, Konzentration: 700 µg/ml von Nanodrop;	GeneID (NCBI): 28514	Empfohlene Verdünnungen: WB 1:1000-1:5000
Wirt: Kaninchen	Vollständiger Name: delta-like 1 (Drosophila)	
Isotyp: IgG	Berechnete Masse: 78 kDa	
Immunogen Katalognummer: AG29534	Beobachtete Masse: 70 kDa	

Anwendungen

Geprüfte Anwendungen: WB, ELISA	Positivkontrollen: WB: Rattenhirngewebe, HUVEC-Zellen, Maushirngewebe
Getestete Reaktivität: Human, Maus, Ratte	

Hintergrundinformationen

The Notch pathway functions during diverse developmental and physiological processes. Notch receptor and its ligands, Delta and Jagged, are transmembrane proteins with large extracellular domains that consist primarily of epidermal growth factor (EGF)-like repeats (PMID: 16921404). Delta-like protein 1 (DLL1, also named as Delta1) is a ligand of NOTCH1, NOTCH2 and NOTCH3 receptors that binds the extracellular domain of Notch receptor in a cis and trans fashion manner (PMID: 11006133). DLL1 play a role in development of the central nervous system, somites and lymphocytes (PMID: 31353024). It is overexpressed in various cancers and is involved in the regulation of cancer progression (PMID: 32440154). DLL1 undergoes proteolytic processing in its extracellular domain by ADAM proteases and gamma-secretase (PMID: 17107962; 12794186).

Lagerung

Lagerungsbedingungen:
Bei -20°C lagern. Nach dem Versand ein Jahr lang stabil
Lagerungspuffer:
PBS mit 0.02% Natriumazid und 50% Glycerin pH 7.3.
Aliquotieren ist nicht notwendig bei -20°C Lagerung

*** 20ul-Größen enthalten 0.1% BSA

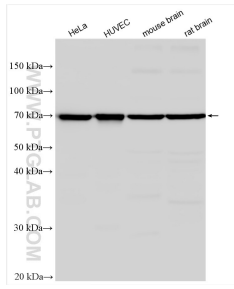
For technical support and original validation data for this product please contact:

T: 1 (888) 4PTGLAB (1-888-478-4522) (toll free
in USA), or 1(312) 455-8498 (outside USA)

E: proteintech@ptglab.com
W: ptglab.com

This product is exclusively available under Proteintech Group brand and is not available to purchase from any other manufacturer.

Ausgewählte Validierungsdaten



Various lysates were subjected to SDS PAGE followed by western blot with 28544-1-AP (DLL1 antibody) at dilution of 1:2500 incubated at room temperature for 1.5 hours.