

Nur für Forschungszwecke

Piezo1 (extracellular domain) Polyklonaler Antikörper



Katalog-Nr.: 28511-1-AP

Vorgestelltes Produkt

5 Publikationen

Allgemeine Informationen

Katalog-Nr.: 28511-1-AP	GenBank-Zugangsnummer: BC008073	Reinigungsmethode: Antigen-Affinitätsreinigung
Größe: 150ul, Konzentration: 500 µg/ml von Nanodrop;	GeneID (NCBI): 9780	Empfohlene Verdünnungen: WB 1:500-1:2000 IHC 1:50-1:500
Wirt: Kaninchen	Vollständiger Name: family with sequence similarity 38, member A	
Isotyp: IgG	Berechnete Masse: 286 kDa	
Immunogen Katalognummer: AG29858	Beobachtete Masse: 280-300 kDa	

Anwendungen

Geprüfte Anwendungen:

IHC, WB, ELISA

In Publikationen genannte Anwendungen:

CoIP, IF, IP, WB

Getestete Reaktivität:

Human

Zitierte Arten:

Human, Maus

Hinweis-IHC: Antigenmaskierung mit TE-Puffer pH 9,0 empfohlen. (*) Wahlweise kann die Antigenmaskierung auch mit Citratpuffer pH 6,0 erfolgen.

Positivkontrollen:

WB: HeLa-Zellen, HepG2-Zellen, hTERT-RPE1-Zellen

IHC: humanes Lungenkarzinomgewebe,

Hintergrundinformationen

Mechanotransduction, the conversion of mechanical force into biological signals, is a fundamental physiologic process of mammalian cells which influences many critical processes including embryonic development, tactile, pain, and auditory sensation, regulation of vascular tone, flow sensing in the kidney, and muscle and tendon stretch. FAM38A, also known as PIEZO 1, has recently been identified as a mechanotransduction protein that gets involved in mechanosensation and stretch-activated cation channel activation. Fam38A also plays a key role in epithelial cell adhesion by maintaining integrin activation through R-Ras recruitment to the ER. Mutations in gene encoding PIEZO1 are associated with hereditary xerocytosis. Piezo1 also regulates extrusion to maintain homeostatic epithelial cell numbers. This antibody was raised against the extracellular domain of human Piezo1.

Bemerkenswerte Veröffentlichungen

Verfasser	Pubmed ID	Journal	Anwendung
Jin Hu	36368316	Neuron	WB,IF
Xiaoduo Zhao	35230979	JCI Insight	WB
Yue Wan	36598105	Glia	WB,IF

Lagerung

Lagerungsbedingungen:

Bei -20°C lagern. Nach dem Versand ein Jahr lang stabil

Lagerungspuffer:

PBS mit 0.02% Natriumazid und 50% Glycerin pH 7.3.

Aliquotieren ist nicht notwendig bei -20°C Lagerung

*** 20ul-Größen enthalten 0.1% BSA

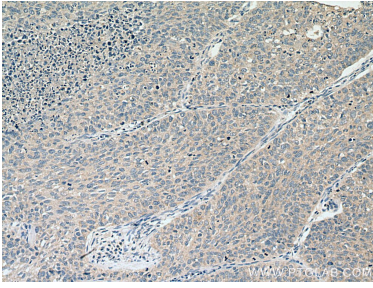
For technical support and original validation data for this product please contact:

T: 1 (888) 4PTGLAB (1-888-478-4522) (toll free in USA), or 1(312) 455-8498 (outside USA)

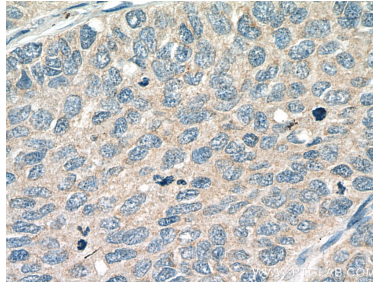
E: proteintech@ptglab.com
W: ptglab.com

This product is exclusively available under Proteintech Group brand and is not available to purchase from any other manufacturer.

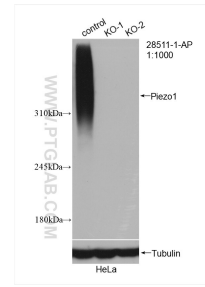
Ausgewählte Validierungsdaten



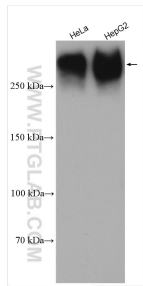
Immunohistochemical analysis of paraffin-embedded human lung cancer tissue slide using 28511-1-AP (PIEZO1 antibody) at dilution of 1:200 (under 10x lens). Heat mediated antigen retrieval with Tris-EDTA buffer (pH 9.0).



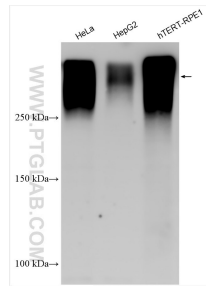
Immunohistochemical analysis of paraffin-embedded human lung cancer tissue slide using 28511-1-AP (PIEZO1 antibody) at dilution of 1:200 (under 40x lens). Heat mediated antigen retrieval with Tris-EDTA buffer (pH 9.0).



WB result of Piezo1 (extracellular domain) antibody (28511-1-AP; 1:1000; room temperature for 1.5 hours) with wild-type and Piezo1 (extracellular domain) knockout HeLa cells.



Various lysates were subjected to SDS PAGE followed by western blot with 28511-AP (Piezo1 (extracellular domain) antibody) at dilution of 1:1000 incubated at room temperature for 1.5 hours.



Various lysates were subjected to SDS PAGE followed by western blot with 28511-AP (Piezo1 (extracellular domain) antibody) at dilution of 1:3000 incubated at room temperature for 1.5 hours.