

Nur für Forschungszwecke

MRP1 Polyklonaler Antikörper

Katalog-Nr.:27825-1-AP



Allgemeine Informationen

Katalog-Nr.: 27825-1-AP	GenBank-Zugangsnummer: NM_004996	Reinigungsmethode: Antigen-Affinitätsreinigung
Größe: 150ul , Konzentration: 600 µg/ml von Nanodrop;	GeneID (NCBI): 4363	Empfohlene Verdünnungen: WB 1:500-1:1000 IHC 1:50-1:500
Wirt: Kaninchen	Vollständiger Name: ATP-binding cassette, sub-family C (CFTR/MRP), member 1	
Isotyp: IgG	Berechnete Masse: 172 kDa	
Immunogen Katalognummer: AG27048	Beobachtete Masse: 180-190 kDa	

Anwendungen

Geprüfte Anwendungen: IHC, WB, ELISA	Positivkontrollen: WB : 37°C incubated HeLa cells, IHC : humanes Mammakarzinomgewebe,
Getestete Reaktivität: Human	

Hinweis-IHC: Antigendemaskierung mit TE-Puffer pH 9,0 empfohlen. (*) Wahlweise kann die Antigendemaskierung auch mit Citratpuffer pH 6,0 erfolgen.

Hintergrundinformationen

Multidrug resistant-associated protein 1 (MRP1, also known as ABCC1) is a member of the ATP-binding cassette (ABC) transporter protein superfamily, subfamily C. MRP1 is overexpressed in cancers and contributes to the occurrence of multidrug resistance (MDR). Expression of MRP1 has been considered as a negative marker for the outcome of chemotherapy. Recently MRP1 has been reported to play a crucial role in Aβ clearance at the blood-brain barrier.

Lagerung

Lagerungsbedingungen:
Bei -20°C lagern. Nach dem Versand ein Jahr lang stabil
Lagerungspuffer:
PBS mit 0.02% Natriumazid und 50% Glycerin pH 7.3.
Aliquotieren ist nicht notwendig bei -20°C Lagerung

*** 20ul-Größen enthalten 0.1% BSA

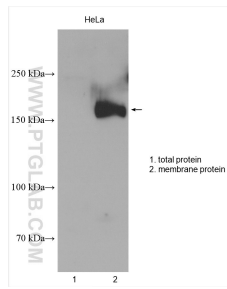
For technical support and original validation data for this product please contact:

T: 1 (888) 4PTGLAB (1-888-478-4522) (toll free in USA), or 1(312) 455-8498 (outside USA)

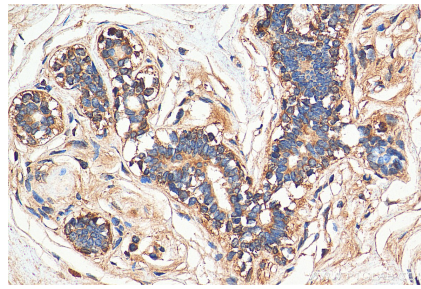
E: proteintech@ptglab.com
W: ptglab.com

This product is exclusively available under Proteintech Group brand and is not available to purchase from any other manufacturer.

Ausgewählte Validierungsdaten



37°C incubated HeLa cells were subjected to SDS PAGE followed by western blot with 27825-1-AP (MRP1 antibody) at dilution of 1:600 incubated at room temperature for 1.5 hours.



Immunohistochemical analysis of paraffin-embedded human breast cancer tissue slide using 27825-1-AP (ABCC1 antibody) at dilution of 1:200 (under 40x lens). Heat mediated antigen retrieval with Tris-EDTA buffer (pH 9.0).