

Nur für Forschungszwecke

CHCHD10 Polyklonaler Antikörper

Katalog-Nr.: 25671-1-AP

Vorgestelltes Produkt

13 Publikationen



Allgemeine Informationen

Katalog-Nr.:
25671-1-AP

Größe:
150ul, Konzentration: 600 µg/ml von
Nanodrop und 300 µg/ml durch die
Bradford-Methode mit BSA als
Standard;

Wirt:
Kaninchen

Isotyp:
IgG

Immunogen Katalognummer:
AG22598

GenBank-Zugangsnummer:
BC065232

GeneID (NCBI):
400916

Vollständiger Name:
coiled-coil-helix-coiled-coil-helix
domain containing 10

Berechnete Masse:
14 kDa

Beobachtete Masse:
14 kDa

Reinigungsmethode:

Antigen-Affinitätsreinigung

Empfohlene Verdünnungen:

WB 1:2000-1:10000

IP 0.5-4.0 µg für IP und 1:500-1:1000
für WB

IHC 1:50-1:500

IF 1:200-1:800

Anwendungen

Geprüfte Anwendungen:

IF, IHC, IP, WB, ELISA

In Publikationen genannte Anwendungen:

IF, IHC, WB

Getestete Reaktivität:

Human, Maus

Zitierte Arten:

Human, Maus

**Hinweis-IHC: Antigendemaskierung mit TE-
Puffer pH 9,0 empfohlen. (*) Wahlweise
kann die Antigendemaskierung auch mit
Citratpuffer pH 6,0 erfolgen.**

Positivkontrollen:

WB: HEK-293-Zellen, Mausherzgewebe,
Maushirngewebe, Rattenherzgewebe

IP: Mausherzgewebe, HAP1 cells

IHC: humanes Nierengewebe, humanes Herzgewebe

IF: HeLa-Zellen, HAP1

Hintergrundinformationen

CHCHD10 is a mitochondrial protein that is enriched at cristae junctions in the intermembrane space and is likely involved in mitochondrial genome stability and maintenance of cristae junctions. Mutations in CHCHD10 have recently been described as a cause of frontotemporal dementia (FTD) comorbid with amyotrophic lateral sclerosis (ALS).

Bemerkenswerte Veröffentlichungen

Verfasser	Pubmed ID	Journal	Anwendung
Meng Ding	35709007	Diabetes	WB
Wei Zhou	30496485	Hum Mol Genet	WB,IF
Mai K Nguyen	34791217	Hum Mol Genet	WB,IF

Lagerung

Lagerungsbedingungen:

Bei -20°C lagern. Nach dem Versand ein Jahr lang stabil

Lagerungspuffer:

PBS mit 0.02% Natriumazid und 50% Glycerin pH 7.3.

Aliquotieren ist nicht notwendig bei -20°C Lagerung

*** 20ul-Größen enthalten 0.1% BSA

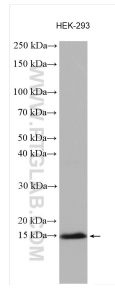
For technical support and original validation data for this product please contact:

T: 1 (888) 4PTGLAB (1-888-478-4522) (toll free
in USA), or 1(312) 455-8498 (outside USA)

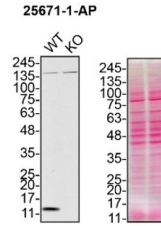
E: proteintech@ptglab.com
W: ptglab.com

This product is exclusively available under Proteintech Group brand and is not available to purchase from any other manufacturer.

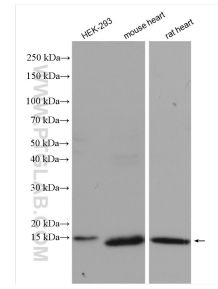
Ausgewählte Validierungsdaten



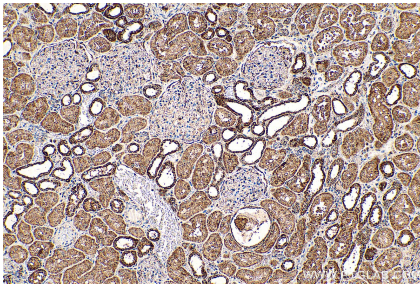
HEK-293 cells were subjected to SDS PAGE followed by western blot with 25671-1-AP (CHCHD10 antibody) at dilution of 1:5000 incubated at room temperature for 1.5 hours.



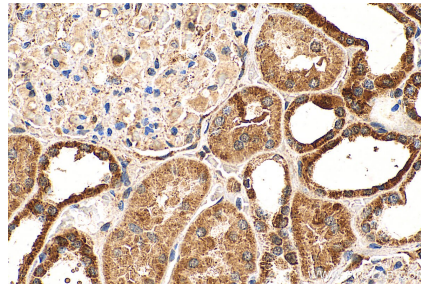
HAP1 (WT and CHCHD10 KO) lysates prepared with RIPA buffer, 50 µg protein loaded. 25671-1-AP incubated at 1:1000 at 4°C overnight in 5% milk in TBST. Ponceau stained transfers shown on right. Data provided by YCharOS, an open science company with a mission to validate commercial antibodies to improve scientific reproducibility and transparency.



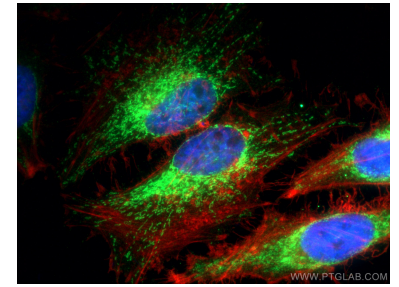
Various lysates were subjected to SDS PAGE followed by western blot with 25671-1-AP (CHCHD10 antibody) at dilution of 1:2000 incubated at room temperature for 1.5 hours.



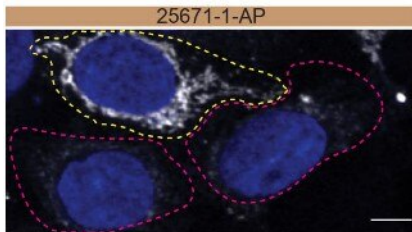
Immunohistochemical analysis of paraffin-embedded human kidney tissue slide using 25671-1-AP (CHCHD10 antibody) at dilution of 1:200 (under 10x lens). Heat mediated antigen retrieval with Tris-EDTA buffer (pH 9.0).



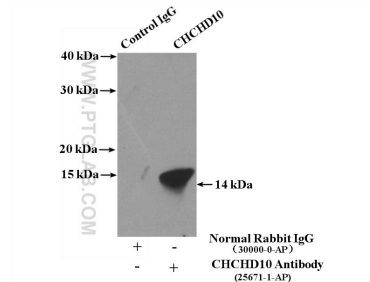
Immunohistochemical analysis of paraffin-embedded human kidney tissue slide using 25671-1-AP (CHCHD10 antibody) at dilution of 1:200 (under 40x lens). Heat mediated antigen retrieval with Tris-EDTA buffer (pH 9.0).



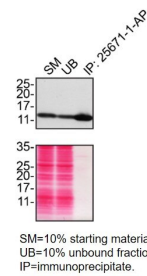
Immunofluorescent analysis of (4% PFA) fixed HeLa cells using CHCHD10 antibody (25671-1-AP) at dilution of 1:400 and CoralLite@488-Conjugated AffiniPure Goat Anti-Rabbit IgG(H+L), CL594-Phalloidin (red).



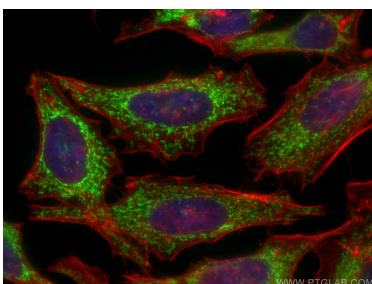
HAP1 WT cells (yellow outline) and CHCHD10 KO cells (red outline) labelled with a green or a far-red fluorescence dye, respectively. Cells fixed with 4% PFA and stained with 25671-1-AP at 1:300 plus DAPI. Bars = 10 µm. Data provided by YCharOS, an open science company with a mission to validate commercial antibodies to improve scientific reproducibility and transparency.



IP Result of anti-CHCHD10 (IP:25671-1-AP, 4µg; Detection:25671-1-AP 1:600) with mouse heart tissue lysate 4000µg.



HAP1 lysates prepared and IP of CHCHD10 performed using 1.0 µg of 25671-1-AP coupled to protein A- Sepharose beads. The Ponceau stained transfers of each blot are shown. Data provided by YCharOS, an open science company with a mission to validate commercial antibodies to improve scientific reproducibility and transparency.



Immunofluorescent analysis of (4% PFA) fixed HeLa cells using CHCHD10 antibody (25671-1-AP) at dilution of 1:200 and CoraLite®488-Conjugated AffiniPure Goat Anti-Rabbit IgG(H+L), CL594-phalloidin (red).