

Nur für Forschungszwecke

mDia1 Polyklonaler Antikörper

Katalog-Nr.:20624-1-AP

Vorgestelltes Produkt

14 Publikationen



Allgemeine Informationen

Katalog-Nr.: 20624-1-AP	GenBank-Zugangsnummer: BC007411	Reinigungsmethode: Antigen-Affinitätsreinigung
Größe: 150ul, Konzentration: 500 µg/ml von Nanodrop;	GeneID (NCBI): 1729	Empfohlene Verdünnungen: WB 1:1000-1:8000 IP 0.5-4.0 µg für IP und 1:500-1:1000 für WB
Wirt: Kaninchen	Vollständiger Name: diaphanous homolog 1 (Drosophila)	IHC 1:50-1:500 IF 1:50-1:500
Isotyp: IgG	Berechnete Masse: 1272 aa, 141 kDa	
Immunogen Katalognummer: AG14523	Beobachtete Masse: 140-150 kDa, 70 kDa	

Anwendungen

Geprüfte Anwendungen:

IF, IHC, IP, WB, ELISA

In Publikationen genannte Anwendungen:

ChIP, IF, IHC, WB

Getestete Reaktivität:

Affe, Human, Maus, Ratte

Zitierte Arten:

Human, Maus

Positivkontrollen:

WB: HeLa-Zellen, COS-7-Zellen, humanes Herzgewebe, humanes Skelettmuskelgewebe, HUVEC-Zellen, MDA-MB-231-Zellen, NIH/3T3-Zellen

IP: HeLa-Zellen,

IHC: Mausnierengewebe,

IF: HeLa-Zellen, HepG2-Zellen

Hinweis-IHC: Antigenmaskierung mit TE-Puffer pH 9,0 empfohlen. (*) Wahlweise kann die Antigenmaskierung auch mit Citratpuffer pH 6,0 erfolgen.

Hintergrundinformationen

mDia1, also known as DIAPH1 or Diap1, is a mammalian diaphanous-related formin which is implicated in multiple physical and pathological events including cytoskeletal dynamics, autosomal hearing loss, and myelodysplasia. Depending upon the cell type and position in the cell cycle, mDia1 has been shown to localize to the cell cortex, trafficking endosomes, cleavage furrow, mid-bodies, and centrosomes, the cytoplasmic microtubule-organizing center crucial for cell division. Mutation of mDia1 has been linked to microcephaly. This antibody recognizes the endogenous mDia1 mainly around 140-150 kDa, while sometimes an additional 70 kDa can also be observed which is proposed to be a fragment of 140-150 kDa molecules (26011179).

Bemerkenswerte Veröffentlichungen

Verfasser	Pubmed ID	Journal	Anwendung
Jessica D Arden	26354425	Mol Biol Cell	WB, IF
Yan Guo	36198275	Cell Rep	WB
Fernando R Valencia	34822787	Dev Cell	WB

Lagerung

Lagerungsbedingungen:

Bei -20°C lagern. Nach dem Versand ein Jahr lang stabil

Lagerungspuffer:

PBS mit 0.02% Natriumazid und 50% Glycerin pH 7.3.

Aliquotieren ist nicht notwendig bei -20°C Lagerung

*** 20ul-Größen enthalten 0.1% BSA

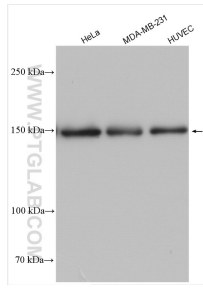
For technical support and original validation data for this product please contact:

T: 1 (888) 4PTGLAB (1-888-478-4522) (toll free in USA), or 1(312) 455-8498 (outside USA)

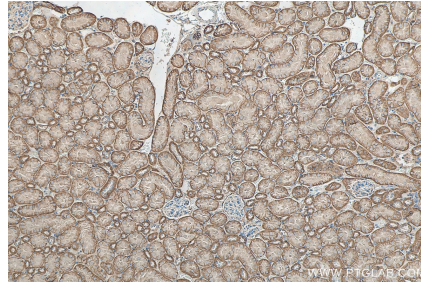
E: proteintech@ptglab.com
W: ptglab.com

This product is exclusively available under Proteintech Group brand and is not available to purchase from any other manufacturer.

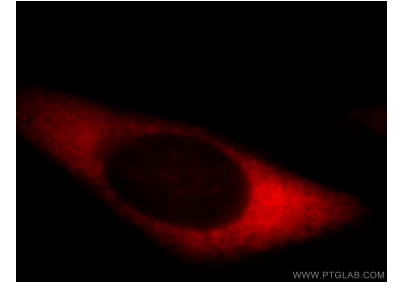
Ausgewählte Validierungsdaten



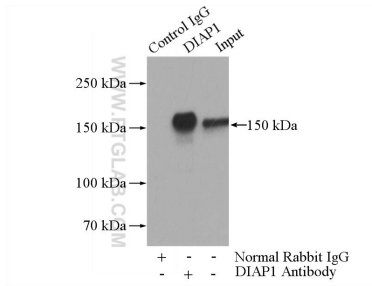
Various lysates were subjected to SDS PAGE followed by western blot with 20624-1-AP (mDia1 antibody) at dilution of 1:4000 incubated at room temperature for 1.5 hours.



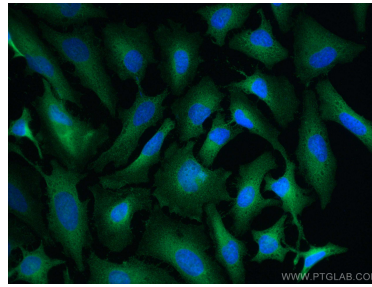
Immunohistochemical analysis of paraffin-embedded mouse kidney tissue slide using 20624-1-AP (mDia1 antibody) at dilution of 1:200 (under 10x lens). Heat mediated antigen retrieval with Tris-EDTA buffer (pH 9.0).



Immunofluorescent analysis of HepG2 cells, using DIAPH1 antibody 20624-1-AP at 1:25 dilution and Rhodamine-labeled goat anti-rabbit IgG (red).



IP Result of anti-mDia1 (IP:20624-1-AP, 4ug; Detection:20624-1-AP 1:500) with HeLa cells lysate 1200ug.



Immunofluorescent analysis of (4% PFA) fixed HeLa cells using mDia1 antibody (20624-1-AP) at dilution of 1:200 and CoraLite®488-Conjugated AffiniPure Goat Anti-Rabbit IgG(H+L).