

Nur für Forschungszwecke

# CHD1 Polyklonaler Antikörper

Katalog-Nr.:20576-1-AP

Vorgestelltes Produkt

6 Publikationen



## Allgemeine Informationen

**Katalog-Nr.:**  
20576-1-AP

**Größe:**  
150ul, Konzentration: 700 µg/ml von  
Nanodrop und 327 µg/ml durch die  
Bradford-Methode mit BSA als  
Standard;

**Wirt:**  
Kaninchen

**Isotyp:**  
IgG

**GenBank-Zugangsnummer:**  
NM\_001270

**GeneID (NCBI):**  
1105

**Vollständiger Name:**  
chromodomain helicase DNA binding  
protein 1

**Berechnete Masse:**  
197 kDa

**Beobachtete Masse:**  
200 kDa

**Reinigungsmethode:**

Antigen-Affinitätsreinigung

**Empfohlene Verdünnungen:**

WB 1:300-1:1000  
IP 0.5-4.0 µg für IP und 1:200-1:1000  
für WB

## Anwendungen

**Geprüfte Anwendungen:**

IP, WB, ELISA

**In Publikationen genannte Anwendungen:**

IF, WB

**Getestete Reaktivität:**

Human, Maus, Ratte

**Zitierte Arten:**

Human, Maus

**Positivkontrollen:**

WB: HeLa-Zellen, A431-Zellen, humanes Hirngewebe,  
Jurkat-Zellen

IP: HeLa-Zellen,

## Hintergrundinformationen

CHD1 belongs to the SNF2/RAD54 helicase family. CHD1 is a TP-dependent chromatin-remodeling factor which functions as substrate recognition component of the transcription regulatory histone acetylation (HAT) complex SAGA. CHD1 regulates polymerase II transcription. It is required for efficient transcription by RNA polymerase I, and more specifically the polymerase I transcription termination step. CHD1 regulates negatively DNA replication. It is required to maintain a specific chromatin configuration across the genome. It is associated with histone deacetylase (HDAC) activity. CHD1 is required for the bridging of SNF2, the FACT complex, the PAF complex as well as the U2 snRNP complex to H3K4me3. It functions to modulate the efficiency of pre-mRNA splicing in part through physical bridging of spliceosomal components to H3K4me3. It is required for maintaining open chromatin and pluripotency in embryonic stem cells. In PTEN-deficient prostate and breast cancers, CHD1 depletion profoundly and specifically suppressed cell proliferation, cell survival and tumorigenic potential. The antibody is specific to CHD1.

## Bemerkenswerte Veröffentlichungen

Verfasser	Pubmed ID	Journal	Anwendung
Jun Zhu	31667976	Cell Prolif	WB
Peter Rütthemann	29018037	EMBO J	WB
Alexandra Wille	26635563	Front Behav Neurosci	WB

## Lagerung

**Lagerungsbedingungen:**

Bei -20°C lagern. Nach dem Versand ein Jahr lang stabil

**Lagerungspuffer:**

PBS mit 0.02% Natriumazid und 50% Glycerin pH 7.3.

Aliquotieren ist nicht notwendig bei -20°C Lagerung

\*\*\* 20ul-Größen enthalten 0.1% BSA

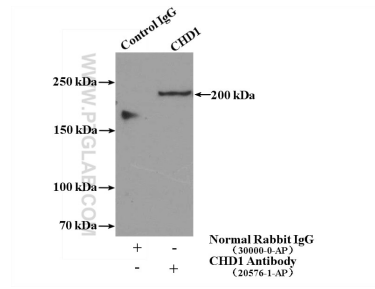
For technical support and original validation data for this product please contact:

T: 1 (888) 4PTGLAB (1-888-478-4522) (toll free  
in USA), or 1(312) 455-8498 (outside USA)

E: proteintech@ptglab.com  
W: ptglab.com

This product is exclusively available under Proteintech Group brand and is not available to purchase from any other manufacturer.

## Ausgewählte Validierungsdaten



HeLa cells were subjected to SDS PAGE followed by western blot with 20576-1-AP (CHD1 antibody) at dilution of 1:500 incubated at room temperature for 1.5 hours.

IP Result of anti-CHD1 (IP:20576-1-AP, 4ug; Detection:20576-1-AP 1:300) with HeLa cells lysate 1600ug.