

Nur für Forschungszwecke

ARF6-Specific Polyklonaler Antikörper



Katalog-Nr.: 20225-1-AP

9 Publikationen

Allgemeine Informationen

Katalog-Nr.: 20225-1-AP	GenBank-Zugangsnummer: NM_001663	Reinigungsmethode: Antigen-Affinitätsreinigung
Größe: 150ul, Konzentration: 700 µg/ml von Nanodrop;	GeneID (NCBI): 382	Empfohlene Verdünnungen: WB 1:1000-1:4000 IHC 1:50-1:500
Wirt: Kaninchen	Vollständiger Name: ADP-ribosylation factor 6	
Isotyp: IgG	Berechnete Masse: 20 kDa	
	Beobachtete Masse: 20 kDa	

Anwendungen

Geprüfte Anwendungen:

IHC, WB, ELISA

In Publikationen genannte Anwendungen:

IF, WB

Getestete Reaktivität:

Human, Maus, Ratte

Zitierte Arten:

Human, Maus

Hinweis-IHC: Antigendemaskierung mit TE-Puffer pH 9,0 empfohlen. (*) Wahlweise kann die Antigendemaskierung auch mit Citratpuffer pH 6,0 erfolgen.

Positivkontrollen:

WB: HepG2-Zellen, A549-Zellen, HEK-293-Zellen, humanes Lebergewebe, Mauslebergewebe, MCF-7-Zellen, Rattenlebergewebe

IHC: humanes Leberkarzinomgewebe, humanes Herzgewebe, humanes Kolongewebe, humanes Nierengewebe

Hintergrundinformationen

ADP-ribosylation factors (ARFs) are members of the ARF family of GTP-binding proteins of the Ras superfamily, with 20 kDa protein size. ARFs bind and regulate GTP/GDP cycle by alternating between the active GTP-bound and inactive GDP-bound conformations. ARF family proteins are essential and ubiquitous in eukaryotes. Six highly conserved members of the family have been identified in mammalian cells. They function in vesicular traffic and actin remodelling and other bioprocesses in cells. The ARF6 is one of best identified ARFs It is present at the plasma membrane and to some extent on endosomal membranes where it regulates the flow of trafficking into and out of the cell and the actin cytoskeleton. The antibody is specific to ARF6.

Bemerkenswerte Veröffentlichungen

Verfasser	Pubmed ID	Journal	Anwendung
Huiling Guo	36224181	Nat Commun	WB
Ernes Candiello	29150658	Sci Rep	
James W Clancy	35235806	Cell Rep	WB,IF

Lagerung

Lagerungsbedingungen:

Bei -20°C lagern. Nach dem Versand ein Jahr lang stabil

Lagerungspuffer:

PBS mit 0.02% Natriumazid und 50% Glycerin pH 7.3.

Aliquotieren ist nicht notwendig bei -20°C Lagerung

*** 20ul-Größen enthalten 0.1% BSA

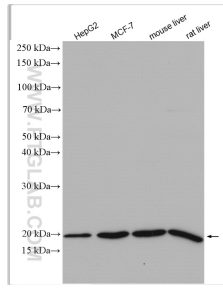
For technical support and original validation data for this product please contact:

T: 1 (888) 4PTGLAB (1-888-478-4522) (toll free in USA), or 1(312) 455-8498 (outside USA)

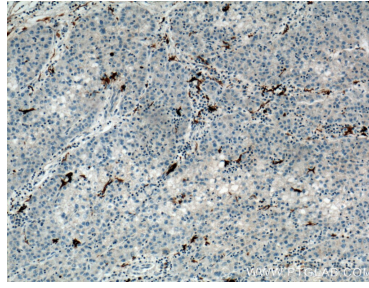
E: proteintech@ptglab.com
W: ptglab.com

This product is exclusively available under Proteintech Group brand and is not available to purchase from any other manufacturer.

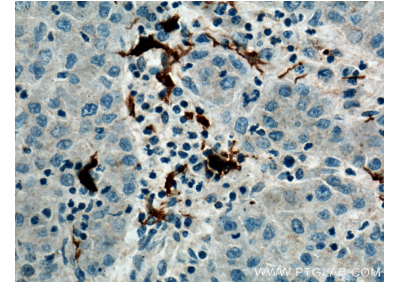
Ausgewählte Validierungsdaten



Various lysates were subjected to SDS PAGE followed by western blot with 20225-1-AP (ARF6-Specific antibody) at dilution of 1:2000 incubated at room temperature for 1.5 hours.



Immunohistochemical analysis of paraffin-embedded human liver cancer tissue slide using 20225-1-AP (ARF6-Specific Antibody) at dilution of 1:200 (under 10x lens). Heat mediated antigen retrieval with Tris-EDTA buffer (pH 9.0).



Immunohistochemical analysis of paraffin-embedded human liver cancer tissue slide using 20225-1-AP (ARF6-Specific Antibody) at dilution of 1:200 (under 40x lens). Heat mediated antigen retrieval with Tris-EDTA buffer (pH 9.0).