

Nur für Forschungszwecke

CREBZF Polyklonaler Antikörper

Katalog-Nr.:19070-1-AP



Allgemeine Informationen

Katalog-Nr.: 19070-1-AP	GenBank-Zugangsnummer: BC093796	Reinigungsmethode: Antigen-Affinitätsreinigung
Größe: 150ul , Konzentration: 600 µg/ml von Nanodrop;	GeneID (NCBI): 58487	Empfohlene Verdünnungen: WB 1:500-1:2000
Wirt: Kaninchen	Vollständiger Name: CREB/ATF bZIP transcription factor	
Isotyp: IgG	Berechnete Masse: 272 aa, 30 kDa	
Immunogen Katalognummer: AG13625	Beobachtete Masse: 30 kDa	

Anwendungen

Geprüfte Anwendungen: WB, ELISA	Positivkontrollen: WB : Mausnierengewebe, Maus-Eierstockgewebe, Mauslebergewebe
Getestete Reaktivität: Maus	

Hintergrundinformationen

CREBZF is a basic region-leucine zipper (bZIP) transcription factor that belongs to the cAMP-response-element-binding protein (CREB)/activating transcription factor (ATF) family. CREBZF gene expression produces two isoforms, CREBZF-L (long isoform of CREBZF, also known as SMILE) and CREBZF-S (short isoform of CREBZF, also known as Zhangfei), resulting from alternative initiation codons. CREBZF fulfills its role in transcriptional regulation by heterodimerizing with other transcription factors as a coregulator and then binding to target promoters and regulating downstream gene expression. CREBZF has been identified as a novel transcriptional coregulator of a variety of nuclear receptors (PMID: 31124138).

Lagerung

Lagerungsbedingungen:
Bei -20°C lagern. Nach dem Versand ein Jahr lang stabil
Lagerungspuffer:
PBS mit 0.02% Natriumazid und 50% Glycerin pH 7.3.
Aliquotieren ist nicht notwendig bei -20°C Lagerung

*** 20ul-Größen enthalten 0.1% BSA

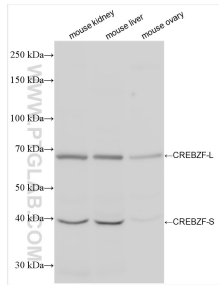
For technical support and original validation data for this product please contact:

T: 1 (888) 4PTGLAB (1-888-478-4522) (toll free
in USA), or 1(312) 455-8498 (outside USA)

E: proteintech@ptglab.com
W: ptglab.com

This product is exclusively available under Proteintech Group brand and is not available to purchase from any other manufacturer.

Ausgewählte Validierungsdaten



Various lysates were subjected to SDS PAGE followed by western blot with 19070-1-AP (CREBZF antibody) at dilution of 1:1000 incubated at room temperature for 1.5 hours.