

Nur für Forschungszwecke

Cathepsin V Polyklonaler Antikörper

Katalog-Nr.:18442-1-AP



Allgemeine Informationen

Katalog-Nr.: 18442-1-AP	GenBank-Zugangsnummer: BC023504	Reinigungsmethode: Antigen-Affinitätsreinigung
Größe: 150ul, Konzentration: 300 µg/ml von Nanodrop und 220 µg/ml durch die Bradford-Methode mit BSA als Standard;	GeneID (NCBI): 1515	Empfohlene Verdünnungen: WB 1:500-1:1000
Wirt: Kaninchen	Vollständiger Name: cathepsin L2	
Isotyp: IgG	Berechnete Masse: 37 kDa	
Immunogen Katalognummer: AG13284	Beobachtete Masse: 26-36 kDa	

Anwendungen

Geprüfte Anwendungen: WB, ELISA	Positivkontrollen: WB : Maushodengewebe, humanes Hodengewebe, Rattenlebergewebe
Getestete Reaktivität: Human, Maus, Ratte	

Hintergrundinformationen

Cathepsin V is a lysosomal cysteine protease that has an important role in corneal physiology. Cathepsin V was found to be differentially expressed in relation to pigmented skin backgrounds, and was about 7.5-folds higher in keratinocytes from lightly pigmented, relative to darkly pigmented skins. It is expressed in primary keratinocytes, melanocytes, and HaCaT keratinocytes, but not in primary fibroblasts. The purified cathepsin L2 was a high molecular weight proteinase of about 78 kDa, but it was unstable to SDS and reducing conditions, which dissociated parts of the proteinase into 66 kDa, 31 kDa and 26 kDa fragments(Food Chemistry, Volume11, Issue4, 879-886) and it can form a complex of 70 kDa with an unidentified subunit(PMID:1930136).

Lagerung

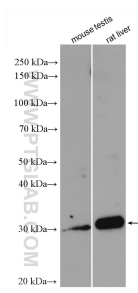
Lagerungsbedingungen:
Bei -20°C lagern. Nach dem Versand ein Jahr lang stabil
Lagerungspuffer:
PBS mit 0.02% Natriumazid und 50% Glycerin pH 7.3.
Aliquotieren ist nicht notwendig bei -20°C Lagerung

***** 20ul-Größen enthalten 0.1% BSA**

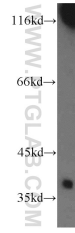
For technical support and original validation data for this product please contact:
T: 1 (888) 4PTGLAB (1-888-478-4522) (toll free in USA), or 1(312) 455-8498 (outside USA)
E: proteintech@ptglab.com
W: ptglab.com

This product is exclusively available under Proteintech Group brand and is not available to purchase from any other manufacturer.

Ausgewählte Validierungsdaten



Various lysates were subjected to SDS PAGE followed by western blot with 18442-1-AP (Cathepsin V antibody) at dilution of 1:800 incubated at room temperature for 1.5 hours.



human testis tissue were subjected to SDS PAGE followed by western blot with 18442-1-AP (Cathepsin V antibody) at dilution of 1:800 incubated at room temperature for 1.5 hours.