

## Allgemeine Informationen

<b>Katalog-Nr.:</b> 17678-1-AP	<b>GenBank-Zugangsnummer:</b> BC021285	<b>Reinigungsmethode:</b> Antigen-Affinitätsreinigung
<b>Größe:</b> 150ul, Konzentration: 700 µg/ml von Nanodrop und 393 µg/ml durch die Bradford-Methode mit BSA als Standard;	<b>GeneID (NCBI):</b> 4487	<b>Empfohlene Verdünnungen:</b> WB 1:500-1:2000
<b>Wirt:</b> Kaninchen	<b>Vollständiger Name:</b> msh homeobox 1	
<b>Isotyp:</b> IgG	<b>Berechnete Masse:</b> 303 aa, 32 kDa	
<b>Immunogen Katalognummer:</b> AG11700	<b>Beobachtete Masse:</b> 32 kDa	

## Anwendungen

<b>Geprüfte Anwendungen:</b> WB,ELISA	<b>Positivkontrollen:</b> WB : Maus-Skelettmuskelgewebe, Ratten-Skelettmuskelgewebe
<b>In Publikationen genannte Anwendungen:</b> WB	
<b>Getestete Reaktivität:</b> Human, Maus, Ratte	
<b>Zitierte Arten:</b> Human, Maus	

## Hintergrundinformationen

MSX1, also known as, Homeobox protein Hox-7 or Msh homeobox 1-like protein, is a 303 amino acid protein, which plays an important role during embryogenesis. Msx1 was the first mammalian member of the Msx subfamily of homeobox genes that was described, and it was isolated from a cDNA library prepared from mouse 8.5-day embryos. Expression of Msx1 has been described during embryogenesis of limb buds, genital ridges, visceral arches, craniofacial structures, central nervous system, and the developing pituitary gland. Msx1 expression in adult mouse uterus and mammary gland has also been reported recently. (PMID: 9369446). MSX1 displays homology to the Drosophila muscle segment homeobox (msh) gene, which is important in development. MSX1 encodes important genes that regulate numerous morphogenic events, such as tooth formation, bone development, development of the central nervous system, and the development and proliferation of various cell types (PMID: 18379900).

## Bemerkenswerte Veröffentlichungen

Verfasser	Pubmed ID	Journal	Anwendung
Huizhe Wu	35173309	Oncogene	WB

## Lagerung

**Lagerungsbedingungen:**  
Bei -20°C lagern. Nach dem Versand ein Jahr lang stabil

**Lagerungspuffer:**  
PBS mit 0.02% Natriumazid und 50% Glycerin pH 7.3.

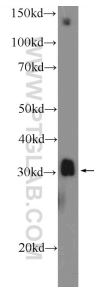
Aliquotieren ist nicht notwendig bei -20°C Lagerung

\*\*\* 20ul-Größen enthalten 0.1% BSA

For technical support and original validation data for this product please contact:  
T: 1 (888) 4PTGLAB (1-888-478-4522) (toll free in USA), or 1(312) 455-8498 (outside USA)  
E: [proteintech@ptglab.com](mailto:proteintech@ptglab.com)  
W: [ptglab.com](http://ptglab.com)

This product is exclusively available under Proteintech Group brand and is not available to purchase from any other manufacturer.

## Ausgewählte Validierungsdaten



mouse skeletal muscle tissue were subjected to SDS PAGE followed by western blot with 17678-1-AP (MSX1 Antibody) at dilution of 1:1000 incubated at room temperature for 1.5 hours.