

Nur für Forschungszwecke

CC2D1A Polyklonaler Antikörper

Katalog-Nr.:16816-1-AP

Vorgestelltes Produkt

4 Publikationen



Allgemeine Informationen

Katalog-Nr.: 16816-1-AP	GenBank-Zugangsnummer: BC064981	Reinigungsmethode: Antigen-Affinitätsreinigung
Größe: 150ul , Konzentration: 1000 µg/ml von54862 Nanodrop und 400 µg/ml durch die Bradford-Methode mit BSA als Standard;	GeneID (NCBI): 1A	Empfohlene Verdünnungen: WB 1:500-1:2000 IP 0.5-4.0 ug für IP und 1:1000-1:4000 für WB IHC 1:20-1:200 IF 1:20-1:200
Wirt: Kaninchen	Vollständiger Name: coiled-coil and C2 domain containing 1A	Berechnete Masse: 951 aa, 104 kDa
Isotyp: IgG	Beobachtete Masse: 130 kDa, 104 kDa	
Immunogen Katalognummer: AG10355		

Anwendungen

Geprüfte Anwendungen: IF, IHC, IP, WB,ELISA	Positivkontrollen: WB : HEK-293-Zellen, HeLa-Zellen, Jurkat-Zellen, Mauslebergewebe IP : Mauslebergewebe, IHC : humanes Hodengewebe, humanes Hautgewebe, humanes Hirngewebe, humanes Lebergewebe IF : HepG2-Zellen,
In Publikationen genannte Anwendungen: WB	
Getestete Reaktivität: Human, Maus, Ratte	
Zitierte Arten: Maus, Ratte	

Hinweis-IHC: Antigendemaskierung mit TE-Puffer pH 9,0 empfohlen. (*) Wahlweise kann die Antigendemaskierung auch mit Citratpuffer pH 6,0 erfolgen.

Hintergrundinformationen

CC2D1A (coiled-coil and C2 domain-containing 1A), also known as Freud-1, Aki1 or TAPE (TBK1-associated protein in endolysosomes), is a evolutionary conserved protein located in different subcellular compartments, including the nucleus, centrosome, and endolysosomes. It acts as a scaffold protein that interacts with various proteins and plays diverse biological roles. Mutations in CC2D1A have been linked to nonsyndromic mental retardation (NMSR) and generate a truncated 85-kDa product. Several isoforms of CC2D1A proteins have also been described: 120 /130-kDa doublet of long isoform and 67 kDa short isoform. The short isoform of CC2D1A has been identified as the predominant isoform in rodent cells, while the long isoform is more abundant in human cells. Recently it has been reported that CC2D1A/TAPE is the first innate immune regulator implicated in both TLR and RLR signaling at a very early step.

Bemerkenswerte Veröffentlichungen

Verfasser	Pubmed ID	Journal	Anwendung
Chen Kuan-Ru KR	22833682	J Biol Chem	WB
Song Zhang	28582325	Anesthesiology	WB
Cheng-Yi Yang	34132974	Neurotherapeutics	WB

Lagerung

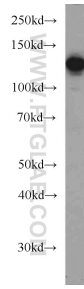
Lagerungsbedingungen:
Bei -20°C lagern. Nach dem Versand ein Jahr lang stabil
Lagerungspuffer:
PBS mit 0.02% Natriumazid und 50% Glycerin pH 7.3.
Aliquotieren ist nicht notwendig bei -20°C Lagerung

*** 20ul-Größen enthalten 0.1% BSA

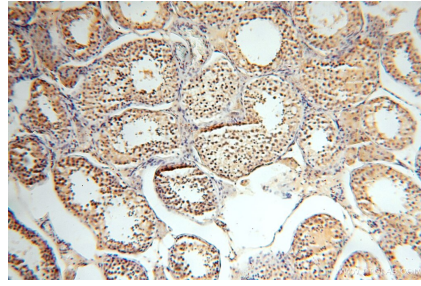
For technical support and original validation data for this product please contact:
T: 1 (888) 4PTGLAB (1-888-478-4522) (toll free in USA), or 1(312) 455-8498 (outside USA)
E: proteintech@ptglab.com
W: ptglab.com

This product is exclusively available under Proteintech Group brand and is not available to purchase from any other manufacturer.

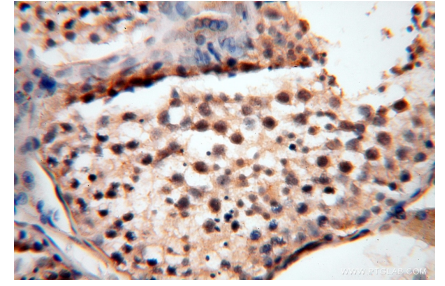
Ausgewählte Validierungsdaten



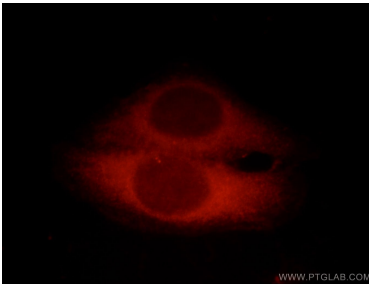
HEK-293 cells were subjected to SDS PAGE followed by western blot with 16816-1-AP (CC2D1A antibody) at dilution of 1:1000 incubated at room temperature for 1.5 hours.



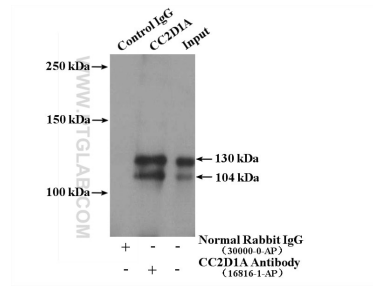
Immunohistochemical analysis of paraffin-embedded human testis using 16816-1-AP (CC2D1A antibody) at dilution of 1:100 (under 10x lens).



Immunohistochemical analysis of paraffin-embedded human testis using 16816-1-AP (CC2D1A antibody) at dilution of 1:100 (under 40x lens).



Immunofluorescent analysis of HepG2 cells, using CC2D1A antibody 16816-1-AP at 1:50 dilution and Rhodamine-labeled goat anti-rabbit IgG (red).



IP Result of anti-CC2D1A (IP:16816-1-AP, 4ug; Detection:16816-1-AP 1:2000) with mouse liver tissue lysate 4000ug.