

Nur für Forschungszwecke

BTN3A2 Polyklonaler Antikörper

Katalog-Nr.:15148-1-AP



Allgemeine Informationen

Katalog-Nr.: 15148-1-AP	GenBank-Zugangsnummer: BC020214	Reinigungsmethode: Antigen-Affinitätsreinigung
Größe: 150ul , Konzentration: 500 µg/ml von Nanodrop und 220 µg/ml durch die Bradford-Methode mit BSA als Standard;	GeneID (NCBI): 11118	Empfohlene Verdünnungen: WB 1:200-1:1000
Wirt: Kaninchen	Vollständiger Name: butyrophilin, subfamily 3, member A2	
Isotyp: IgG	Berechnete Masse: 36 kDa	
Immunogen Katalognummer: AG2212	Beobachtete Masse: 36 kDa	

Anwendungen

Geprüfte Anwendungen: WB,ELISA	Positivkontrollen: WB : SKOV-3-Zellen,
Getestete Reaktivität: Human, Maus	

Hintergrundinformationen

BTN3A2, also named as Butyrophilin subfamily 3 member A2, is a 334 amino acid protein, which contains 1 Ig-like V-type (immunoglobulin-like) domain and belongs to the immunoglobulin superfamily. BTN3A2 plays a role in T-cell responses in the adaptive immune response and inhibits the release of IFNG from activated T-cells. BTN3A2 can form Homodimer and is detected in T-cells and natural killer cells.

Lagerung

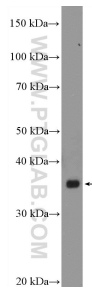
Lagerungsbedingungen:
Bei -20°C lagern. Nach dem Versand ein Jahr lang stabil
Lagerungspuffer:
PBS mit 0.02% Natriumazid und 50% Glycerin pH 7.3.
Aliquotieren ist nicht notwendig bei -20°C Lagerung

***** 20ul-Größen enthalten 0.1% BSA**

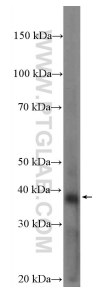
For technical support and original validation data for this product please contact:
T: 1 (888) 4PTGLAB (1-888-478-4522) (toll free in USA), or 1(312) 455-8498 (outside USA)
E: proteintech@ptglab.com
W: ptglab.com

This product is exclusively available under Proteintech Group brand and is not available to purchase from any other manufacturer.

Ausgewählte Validierungsdaten



SKOV-3 cells were subjected to SDS PAGE followed by western blot with 15148-1-AP (BTN3A2 Antibody) at dilution of 1:300 incubated at room temperature for 1.5 hours.



SKOV-3 cells were subjected to SDS PAGE followed by western blot with 15148-1-AP (BTN3A2 Antibody) at dilution of 1:600 incubated at room temperature for 1.5 hours.