

Nur für Forschungszwecke

CREB3L4 Polyklonaler Antikörper

Katalog-Nr.:13630-1-AP



Allgemeine Informationen

Katalog-Nr.:
13630-1-AP

Größe:

150ul, Konzentration: 550 µg/ml von
Nanodrop und 300 µg/ml durch die
Bradford-Methode mit BSA als
Standard;

Wirt:

Kaninchen

Isotyp:

IgG

Immunogen Katalognummer:
AG4548

GenBank-Zugangsnummer:

BC038962

GeneID (NCBI):

148327

Vollständiger Name:

cAMP responsive element binding
protein 3-like 4

Berechnete Masse:

395 aa, 43 kDa

Beobachtete Masse:

43 kDa

Reinigungsmethode:

Antigen-Affinitätsreinigung

Empfohlene Verdünnungen:

WB 1:500-1:1000

IF 1:50-1:500

Anwendungen

Geprüfte Anwendungen:

IF, WB, ELISA

Getestete Reaktivität:

Human

Positivkontrollen:

WB : HepG2-Zellen, HL-60-Zellen

IF : MCF-7-Zellen,

Hintergrundinformationen

CREB3L4 (cAMP responsive element binding protein 3-like 4), also named as AIBZIP, CREB4 and ATCE1, is a member of the CREB/ATF transcription factor family. CREB3L4 may play a role in the unfolded protein response, characterized by their regulation of gene expression through the cAMP-responsive element(PMID: 22829733). CREB3L4 is highly expressed in multiple human cancers, such as human breast carcinoma, prostate cancer(PMID: 32026099, PMID: 28338058). The molecular weight of GRASP55 is 43 kDa.

Lagerung

Lagerungsbedingungen:

Bei -20°C lagern. Nach dem Versand ein Jahr lang stabil

Lagerungspuffer:

PBS mit 0.02% Natriumazid und 50% Glycerin pH 7.3.

Aliquotieren ist nicht notwendig bei -20°C Lagerung

***** 20ul-Größen enthalten 0.1% BSA**

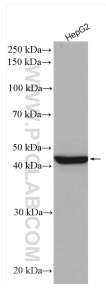
For technical support and original validation data for this product please contact:

T: 1 (888) 4PTGLAB (1-888-478-4522) (toll free
in USA), or 1(312) 455-8498 (outside USA)

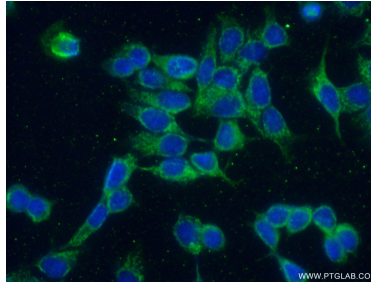
E: proteintech@ptglab.com
W: ptglab.com

This product is exclusively available under Proteintech Group brand and is not available to purchase from any other manufacturer.

Ausgewählte Validierungsdaten



HepG2 cells were subjected to SDS PAGE followed by western blot with 13630-1-AP (CREB3L4 antibody) at dilution of 1:500 incubated at room temperature for 1.5 hours.



Immunofluorescent analysis of (-20°C Ethanol) fixed MCF-7 cells using 13630-1-AP (CREB3L4 antibody) at dilution of 1:50 and Alexa Fluor 488-conjugated AffiniPure Goat Anti-Rabbit IgG(H+L).