

Nur für Forschungszwecke

RUFY1 Polyklonaler Antikörper

Katalog-Nr.:13498-1-AP

4 Publikationen



Allgemeine Informationen

Katalog-Nr.:
13498-1-AP

Größe:
150ul, Konzentration: 550 µg/ml von Nanodrop und 307 µg/ml durch die Bradford-Methode mit BSA als Standard;

Wirt:
Kaninchen

Isotyp:
IgG

Immunogen Katalognummer:
AG4324

GenBank-Zugangsnummer:
BC032571

GeneID (NCBI):
80230

Vollständiger Name:
RUN and FYVE domain containing 1

Berechnete Masse:
708 aa, 80 kDa

Beobachtete Masse:
69 kDa, 80 kDa

Reinigungsmethode:

Antigen-Affinitätsreinigung

Empfohlene Verdünnungen:

WB 1:1000-1:4000

IF 1:20-1:200

Anwendungen

Geprüfte Anwendungen:

IF, IP, WB, ELISA

In Publikationen genannte Anwendungen:

CoIP, IF, WB

Getestete Reaktivität:

Human, Maus, Ratte

Zitierte Arten:

Human, Maus

Positivkontrollen:

WB : HeLa-Zellen,

IF : HeLa-Zellen,

Hintergrundinformationen

Rab proteins form the largest group within the Ras superfamily of small GTPases, which acts as molecular switches by cycling between their inactive active GTP-bound and GDP-bound forms [PMID:15520808]. The small GTP-binding protein Rab4 has been involved in the recycling of $\alpha\beta 3$ integrins in response to platelet-derived growth factor (PDGF) stimulation suggesting a role for Rab4 in cell adhesion and migration [PMID:17001082]. Rabi4 (Rab4 interacting protein), which possesses a RUN domain, two coiled-coil domains and a FYVE finger, was identified as an effector of Rab4, a small GTPase that plays a role in the endocytotic pathway in all cell types [PMID:11172003]. RUFY1 exists three isoforms and molecular weight of isoforms are 80 kDa, 69 kDa and 45 kDa.

Bemerkenswerte Veröffentlichungen

Verfasser	Pubmed ID	Journal	Anwendung
Meng Shi	30478271	Nat Commun	IF
Christine A Phillips-Krawczak	25355947	Mol Biol Cell	WB, IF
Qiaoming Zhi	30407695	Cancer Sci	CoIP

Lagerung

Lagerungsbedingungen:

Bei -20°C lagern. Nach dem Versand ein Jahr lang stabil

Lagerungspuffer:

PBS mit 0.02% Natriumazid und 50% Glycerin pH 7.3.

Aliquotieren ist nicht notwendig bei -20°C Lagerung

*** 20ul-Größen enthalten 0.1% BSA

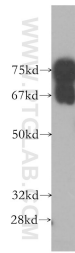
For technical support and original validation data for this product please contact:

T: 1 (888) 4PTGLAB (1-888-478-4522) (toll free in USA), or 1(312) 455-8498 (outside USA)

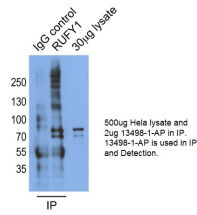
E: proteintech@ptglab.com
W: ptglab.com

This product is exclusively available under Proteintech Group brand and is not available to purchase from any other manufacturer.

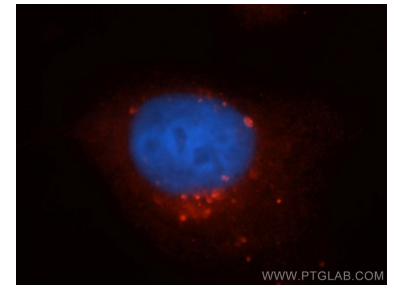
Ausgewählte Validierungsdaten



HeLa cells were subjected to SDS PAGE followed by western blot with 13498-1-AP (RUFY1 antibody) at dilution of 1:1000 incubated at room temperature for 1.5 hours.



IP result of anti-RUFY1 (13498-1-AP for IP and Detection).



Immunofluorescent analysis of HeLa cells, using RUFY1 antibody 13498-1-AP at 1:50 dilution and Rhodamine-labeled goat anti-rabbit IgG (red). Blue pseudocolor = DAPI (fluorescent DNA dye).