

Allgemeine Informationen

Katalog-Nr.:

13400-1-AP

Größe:

150ul , Konzentration: 450 µg/ml von Nanodrop;

Wirt:

Kaninchen

Isotyp:

IgG

Immunogen Katalognummer:

AG4240

GenBank-Zugangsnummer:

BC033657

GeneID (NCBI):

5257

Vollständiger Name:

phosphorylase kinase, beta

Berechnete Masse:

1086 aa, 124 kDa

Beobachtete Masse:

124 kDa

Reinigungsmethode:

Antigen-Affinitätsreinigung

Empfohlene Verdünnungen:

WB 1:500-1:2000
IP 0.5-4.0 µg für IP und 1:500-1:1000 für WB
IHC 1:20-1:200

Anwendungen

Geprüfte Anwendungen:

IHC, IP, WB, ELISA

In Publikationen genannte Anwendungen:

IHC, IP, WB

Getestete Reaktivität:

Human, Maus

Zitierte Arten:

Human, Maus

Positivkontrollen:

WB : HepG2-Zellen, Jurkat-Zellen, K-562-Zellen, LNCaP-Zellen, Mausherzgewebe, Maus-Skelettmuskelgewebe

IP : Mausherzgewebe,

IHC : humanes Skelettmuskelgewebe, humanes Lebergewebe

Hinweis-IHC: Antigenmaskierung mit TE-Puffer pH 9,0 empfohlen. (*) Wahlweise kann die Antigenmaskierung auch mit Citratpuffer pH 6,0 erfolgen.

Hintergrundinformationen

PHKB gene encodes phosphorylase kinase subunit beta involved in glycan biosynthesis and glycogen metabolism. PHKB activity is regulated by phosphorylation of various serine residues, and catalyzes the phosphorylation of serine in certain substrates, including troponin I. Phosphorylase kinase (PhK) complex, composed of alpha, beta, gamma, and delta subunits, stimulates energy production from glycogen in the cascade activation of glycogenolysis. Its large homologous alpha and beta subunits regulate the activity of the catalytic gamma subunit. Defects in PHKB are the cause of glycogen storage disease type 9B (GSD9B) also known as phosphorylase kinase deficiency of liver and muscle (PKD), characterized by hepatomegaly, only slightly elevated transaminases and plasma lipids, clinical improvement with increasing age, and remarkably no clinical muscle involvement.

Bemerkenswerte Veröffentlichungen

Verfasser	Pubmed ID	Journal	Anwendung
Guanghai Wang	28275865	J Cancer Res Clin Oncol	WB, IHC
Motoyasu Hosokawa	30870781	iScience	WB
Lai Guangrui G	22918876	Mol Endocrinol	IP, WB

Lagerung

Lagerungsbedingungen:

Bei -20°C lagern. Nach dem Versand ein Jahr lang stabil

Lagerungspuffer:

PBS mit 0.02% Natriumazid und 50% Glycerin pH 7.3.

Aliquotieren ist nicht notwendig bei -20°C Lagerung

***** 20ul-Größen enthalten 0.1% BSA**

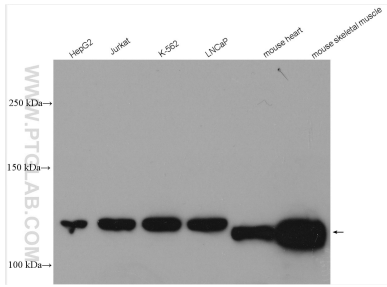
For technical support and original validation data for this product please contact:

T: 1 (888) 4PTGLAB (1-888-478-4522) (toll free in USA), or 1(312) 455-8498 (outside USA)

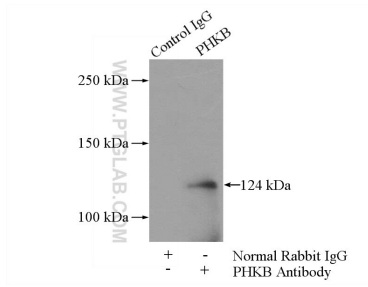
E: proteintech@ptglab.com
W: ptglab.com

This product is exclusively available under Proteintech Group brand and is not available to purchase from any other manufacturer.

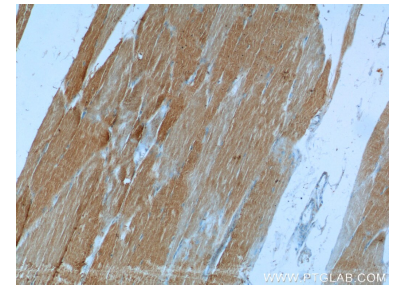
Ausgewählte Validierungsdaten



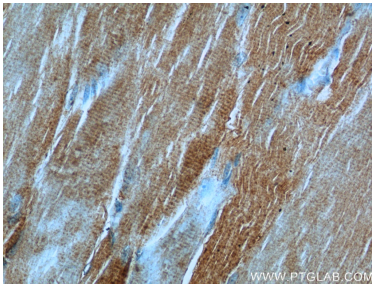
HepG2 cells were subjected to SDS PAGE followed by western blot with 13400-1-AP (PHKB antibody) at dilution of 1:1000 incubated at room temperature for 1.5 hours.



IP Result of anti-PHKB (IP:13400-1-AP, 4ug; Detection:13400-1-AP 1:500) with mouse heart tissue lysate 3200ug.



Immunohistochemical analysis of paraffin-embedded human skeletal muscle tissue slide using 13400-1-AP (PHKB Antibody) at dilution of 1:50 (under 10x lens).



Immunohistochemical analysis of paraffin-embedded human skeletal muscle tissue slide using 13400-1-AP (PHKB Antibody) at dilution of 1:50 (under 40x lens).